



**Commissioners Steven Glassman and Ben Sorensen**

100 North Andrews Avenue  
Fort Lauderdale, FL 33301  
954-828-5004

## **Las Olas Mobility Working Group – Meeting #7**

Commissioners Steven Glassman and Ben Sorensen

City Hall

100 North Andrews Avenue

8<sup>th</sup> Floor Conference Room

Wednesday, May 22, 2019

2:30 PM - 4:00 PM

### **AGENDA**

1. Introductions
2. Presentation: Asad Gilani, 15<sup>th</sup> and Las Olas Traffic Analysis (Transportation and Mobility)
3. Presentation: Sarah Spurlock, Las Olas Special Events (City Manager)
4. Presentation: Anthony Fajardo, Sidewalk Cafes (Sustainable Development)
5. Organization/Group Presentation Schedule
6. Meeting #8: Thursday, June 20 from 2:30PM-4:00PM
7. Adjourn

### **Mission Statement:**

*Connecting residents, businesses and visitors of Fort Lauderdale through the enhancement of this iconic boulevard representing our history and future.*

### **Project Website:**

<http://www.fortlauderdale.gov/lasolasproject>

---

*Two or more City Commissioners and / or Advisory Board members may be present at this meeting.*

## **Las Olas Sidewalks**

### **Parklet:**

Parklet means the platform installed by a permittee over parking spaces adjacent to a sidewalk area upon which tables, chairs, umbrellas, landscaping, benches and other accessory components may be placed to create an enhanced pedestrian experience for the general public and patrons of the permittee's adjacent business, providing an area within which the pedestrian experience along the public right-of-way may be amplified and enhanced by offering an area with which one might sit, rest, recreate or indulge in open air dining and beverage experience. The term parklet, when permitted, also includes the ongoing obligation of maintenance, repair, operation and removal of the parklet improvements in accordance with the terms and conditions of article VII-A, "Parklets" and the parklet revocable license, all of which must be undertaken at the sole cost and expense of the permittee. The parklet shall be located no farther than one hundred fifty (150) feet from any portion of the qualifying business.

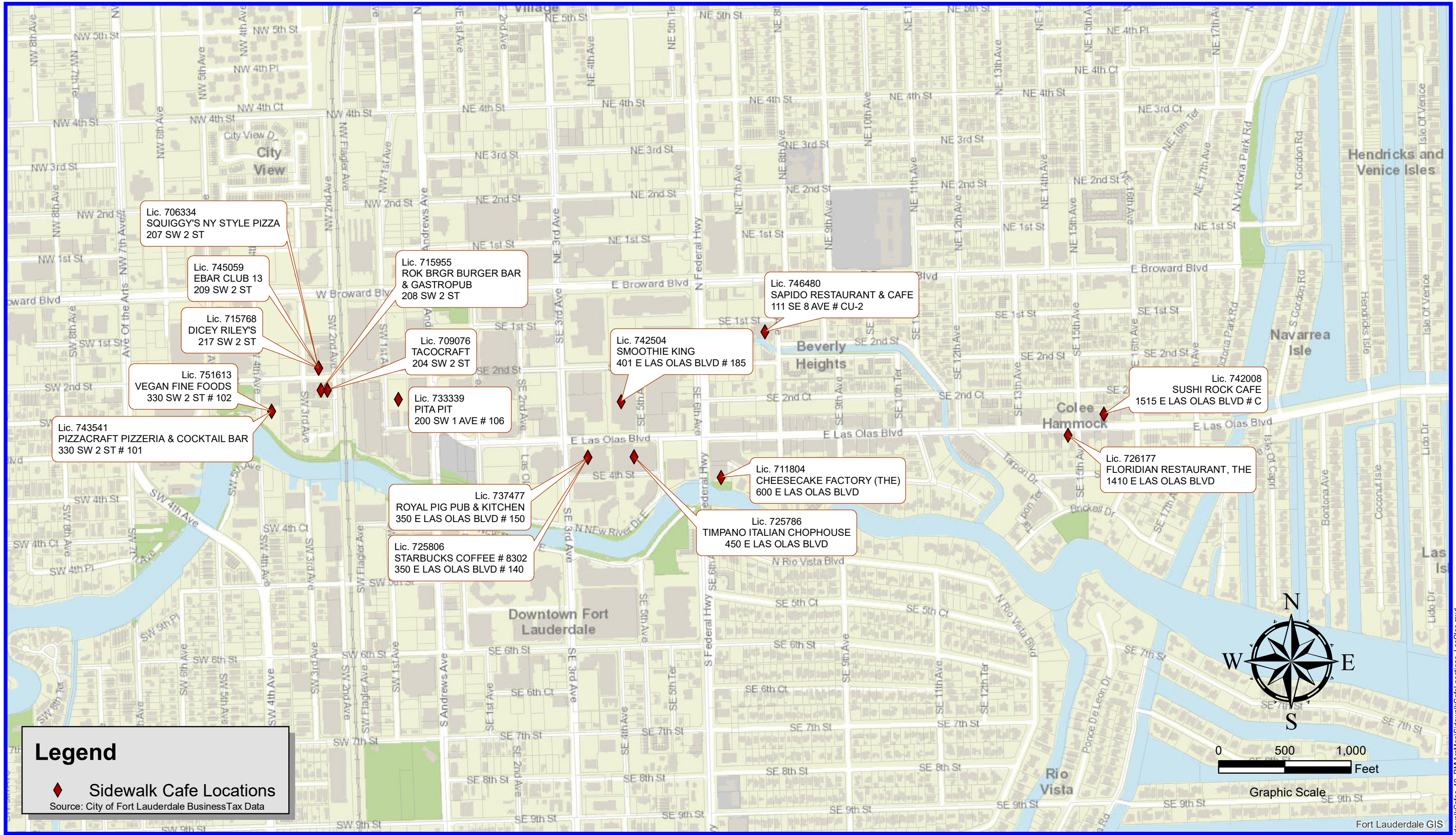
### **Sidewalk Café:**

Sidewalk café. Outdoor seating areas used for sidewalk cafés may be permitted within the public right-of-way, as an accessory use to restaurants where permitted by the zoning district, subject to the requirements of Chapter 25, Article VII, of Volume I of the Code. Awnings located over a sidewalk café may be permitted in accordance with Section 25-22 of Volume I of the Code.

### **Outdoor Dining:**

Outdoor dining areas. Outdoor seating areas used for outdoor dining as an accessory use to a restaurant where permitted by the zoning district.

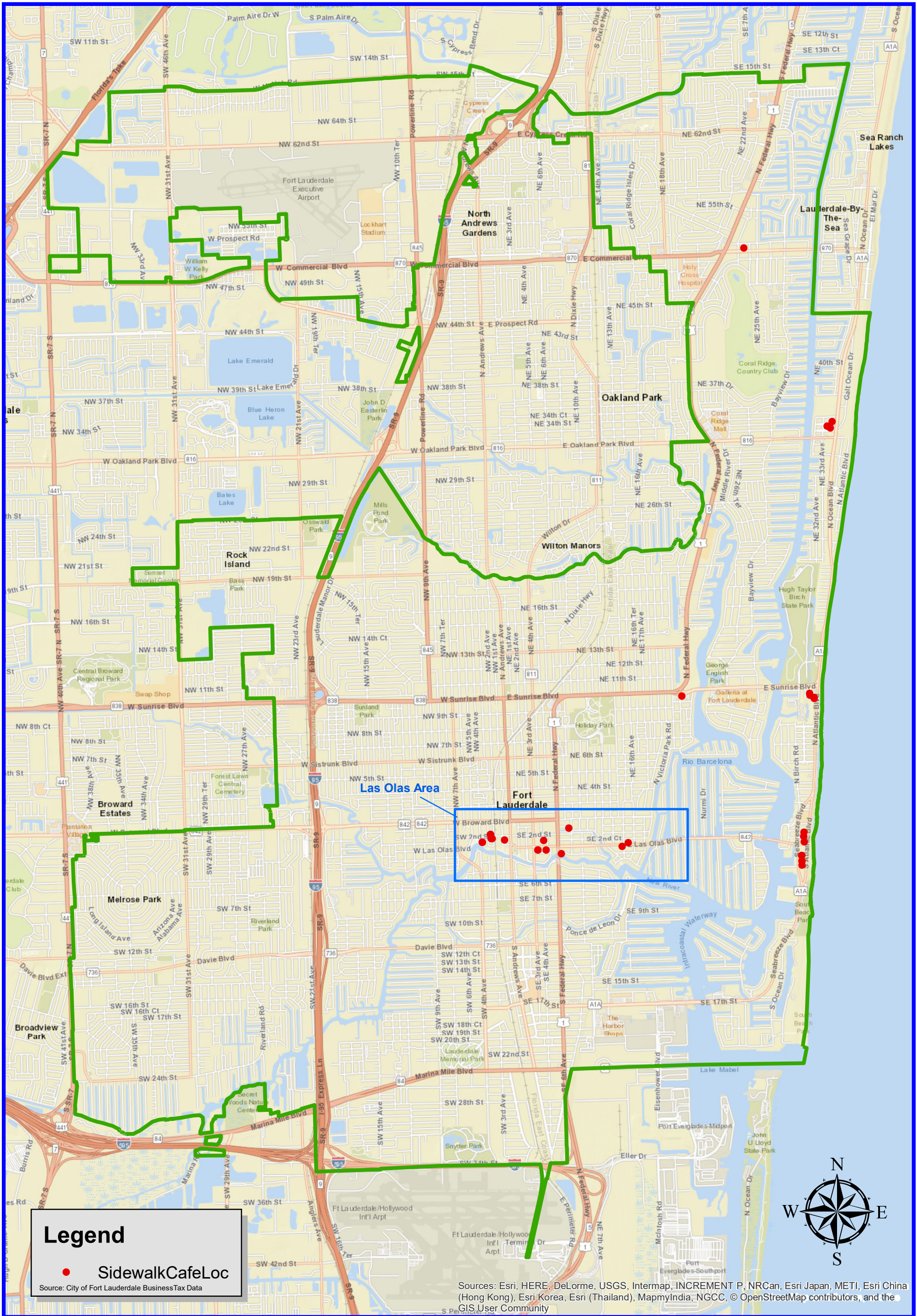




# SIDEWALK CAFES - LAS OLAS BLVD







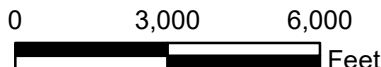
**Legend**

- SidewalkCafeLoc

Source: City of Fort Lauderdale BusinessTax Data

Sources: Esri, HERE, DeLorme, USGS, Intermap, INCREMENT P, NRCan, Esri Japan, METI, Esri China (Hong Kong), Esri Korea, Esri (Thailand), MapmyIndia, NGCC, © OpenStreetMap contributors, and the GIS User Community

# SIDEWALK CAFE LOCATIONS



Graphic Scale



CITY OF FORT LAUDERDALE



3/7/2019



**TRANSforming**  
Fort Lauderdale Together

Innovative Design ▶

Livability ▶

Mobility ▶

Technology ▶

Vision Zero ▶

# CITY OF FT LAUDERDALE TRANSPORTATION AND MOBILITY DEPARTMENT



Asad Gilani, PE, PTP, PTOE Traffic Engineer

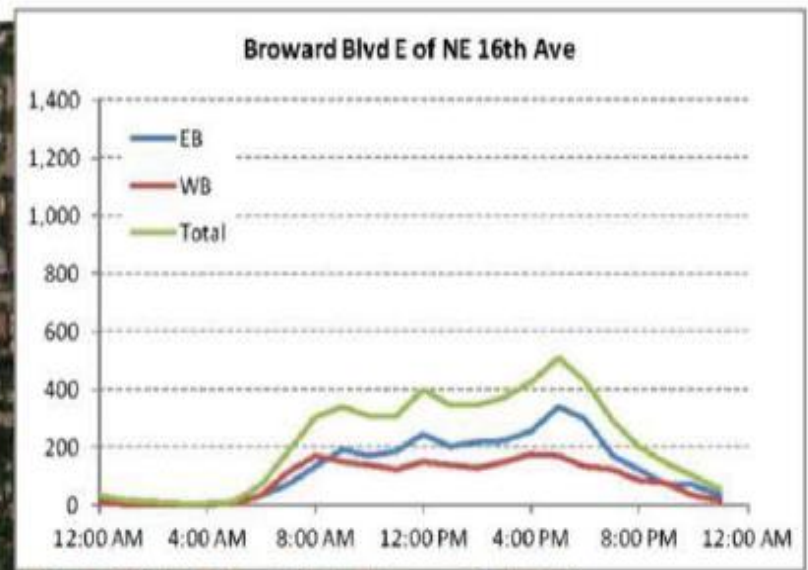
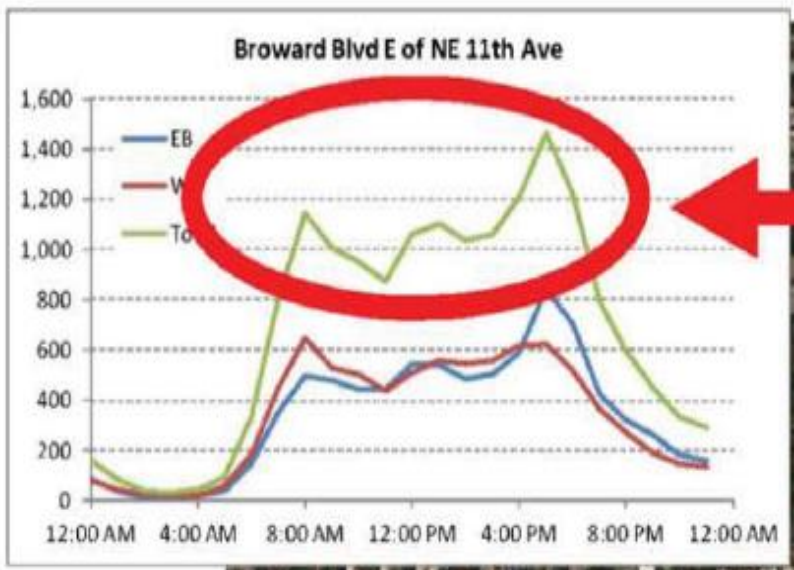


# LAS OLAS AND SE 15 AVE



# BACKGROUND

In September 2013, a study was conducted by Tindale Oliver at the request of City of Ft Lauderdale. The goal of this study was to provide recommendations to address the traffic circulation, safety, mobility and quality of life along Las Olas Boulevard corridor. In order to connect people and goods from I-95/Downtown Fort Lauderdale to Fort Lauderdale Beach, the transportation network requires that Las Olas Boulevard and Broward Boulevard work in tandem resulting in what is known as a “Z” movement utilizing SE 15<sup>th</sup> Avenue as the connector.





# STUDY OBJECTIVES

- Traffic Calming
- Las Olas and SE 15 Ave



# LAS OLAS VISION PLAN

- Traffic Counts
- Operational Analysis
- Geometric Analysis



# TRAFFIC COUNTS

In preparation for the Las Olas Vision Planning phase, traffic counts for the Las Olas area were completed by Quality Counts during mid-March 2019 as requested by the Las Olas Working Group.



# OPERATIONAL ANALYSIS

The operating condition analysis for the signalized intersection at Las Olas Boulevard and SE 15 Avenue was completed using latest traffic engineering software Synchro.

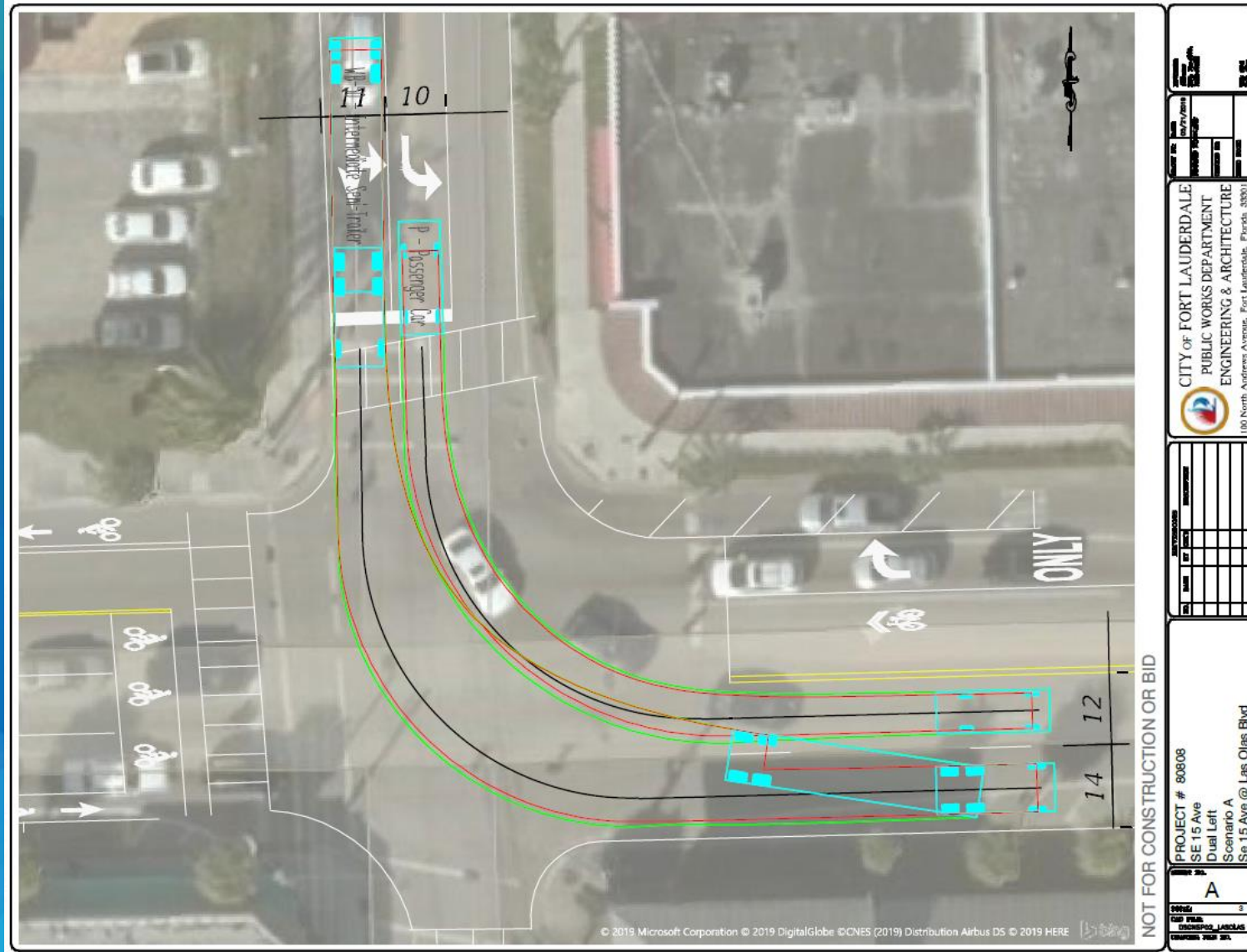
	Overall Intersection	EB Approach	WB Approach	NB Approach	SB Approach
Existing Condition	E(56.6)	C(29.3)	D(36.4)	E(75.4)	F(115.1)
With 2 SB Left Turn Lanes	C(34.8)	C(20.0)	C(21.9)	F(147.3)	D(47.5)

# OPERATIONAL ANALYSIS





# GEOMETRIC ANALYSIS



# LAS OLAS & SE 16 AVE

