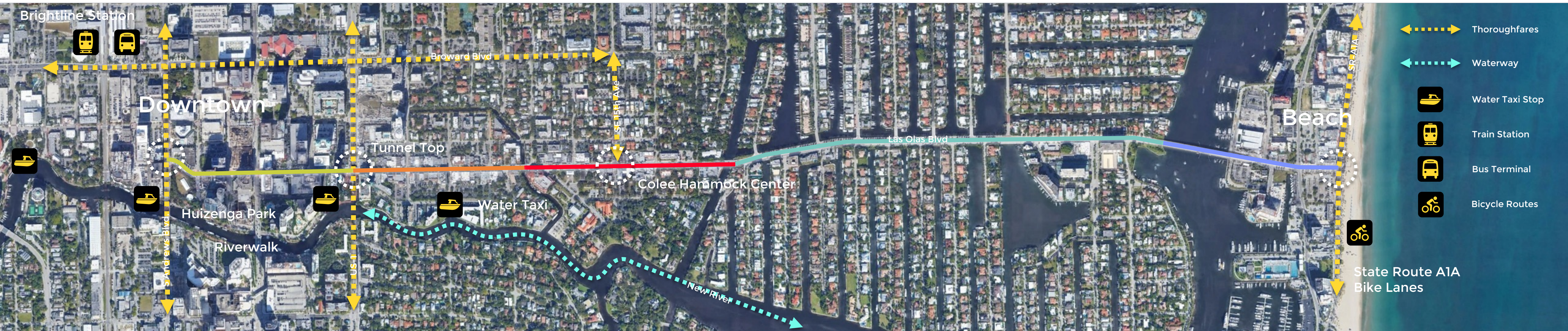


Las Olas Corridor

CONCEPTUAL DESIGN VISION

The Corridor



2.1 miles long

It would be one of the longest, continuously protected, multimodal corridors in South Florida

Connecting Regional Trails

Safe connections will shorten the perceived distance between Downtown Fort Lauderdale and Las Olas Beach

Coordinating with Transit

Water taxis, Brightline, and bus transit should be coordinated.

Updates and Discussion Items

1. Colee Hammock: Removed open space at Tarpon Drive/Las Olas. Intersection will remain in current angled configuration.

Today: Traffic and Historic Shoppes 4 Options

Next Meeting: 15th Avenue/Las Olas, Isles, and Bicycles

Two Meetings Later: Corridor Overview

Traffic Data origin

City collected data

Peak hour manual turning movement counts (TMCs)

When? 3/20/19 and 3/21/19 (Wednesday and Thursday)

Morning (9:00-11:00 a.m.)

Midday (11:00 a.m.-1:00 p.m.)

Afternoon (4:00-6:00 p.m.)

Bidirectional traffic speed and volume tube counts

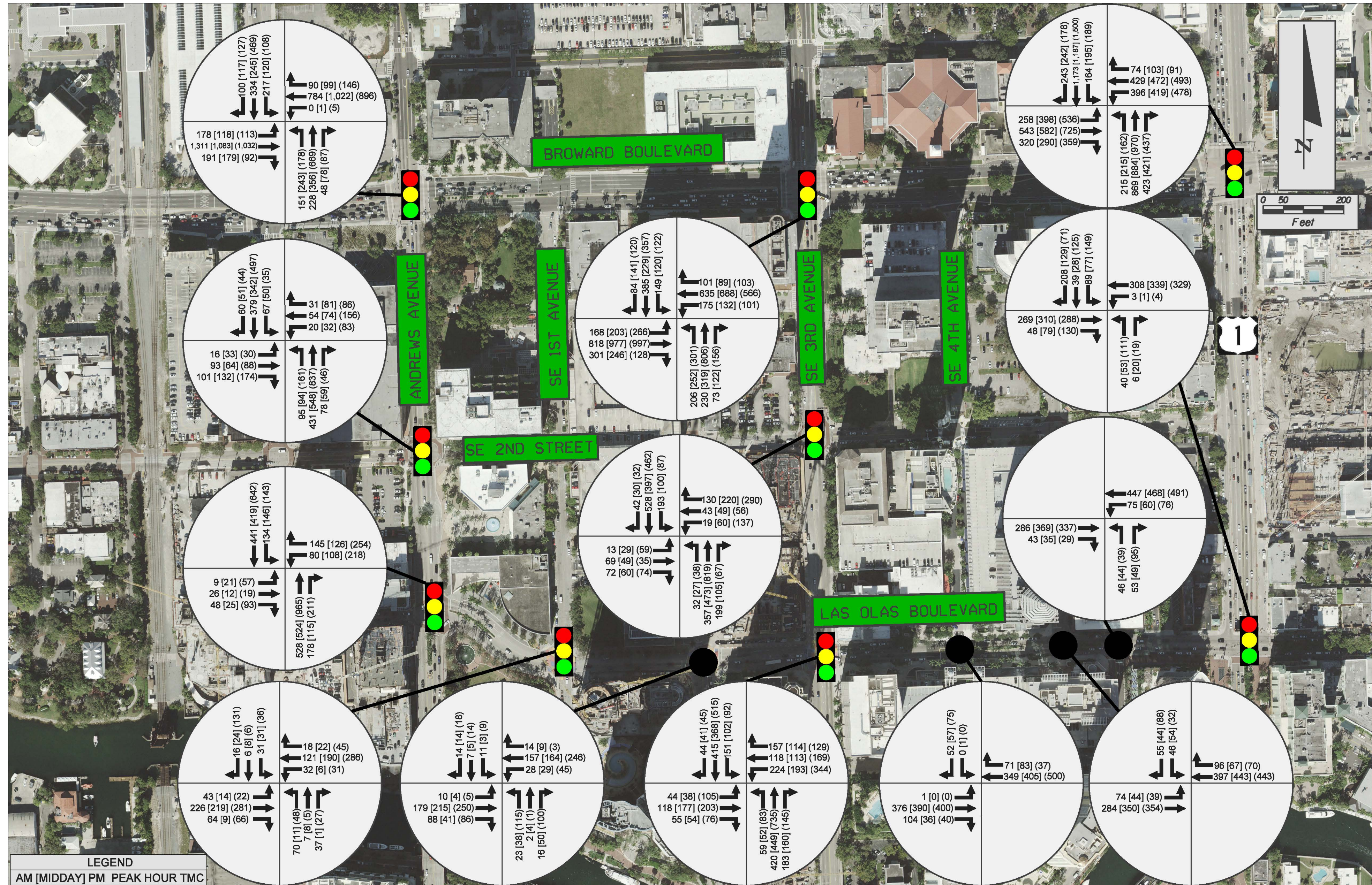
When? Week of 03/18/2019 to 03/24/2019

Week of 04/16/2019 to 04/22/2019

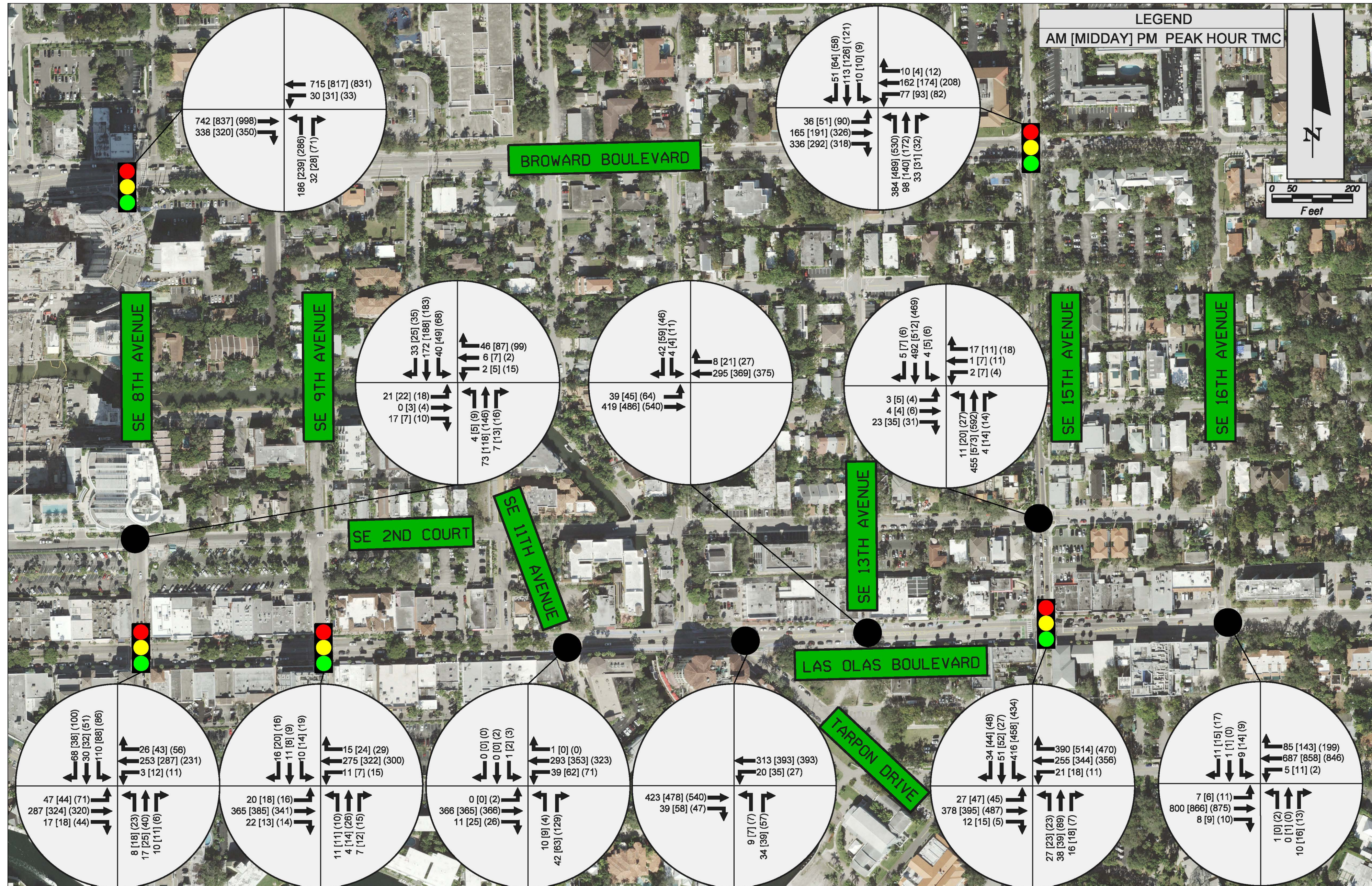
Existing Segment LOS

Peak Hour Road Segment Level of Service Analysis				
Roadway Segment	Roadway Type	Existing 2 Way Peak Hour Volumes	Peak Hour LOS D Volume	Level of Service
Seven Isles Drive to Seabreeze Blvd.	4 Lanes Undivided	1665	2482	C
Isles of Capri to Seven Isles Drive	4 Lanes Divided	2007	2628	C
SE 15th Avenue to Isles of Capri	4 Lanes Undivided	2308	2482	C
SE 11th Avenue to SE 15th Avenue	2 Lanes Undivided	1044	1197	C
SE 6th Avenue to SE 11th Avenue	2 Lanes Divided	1177	1264	C
Andrews Avenue to SE 6th Avenue	4 Lanes Undivided	1189	2482	C

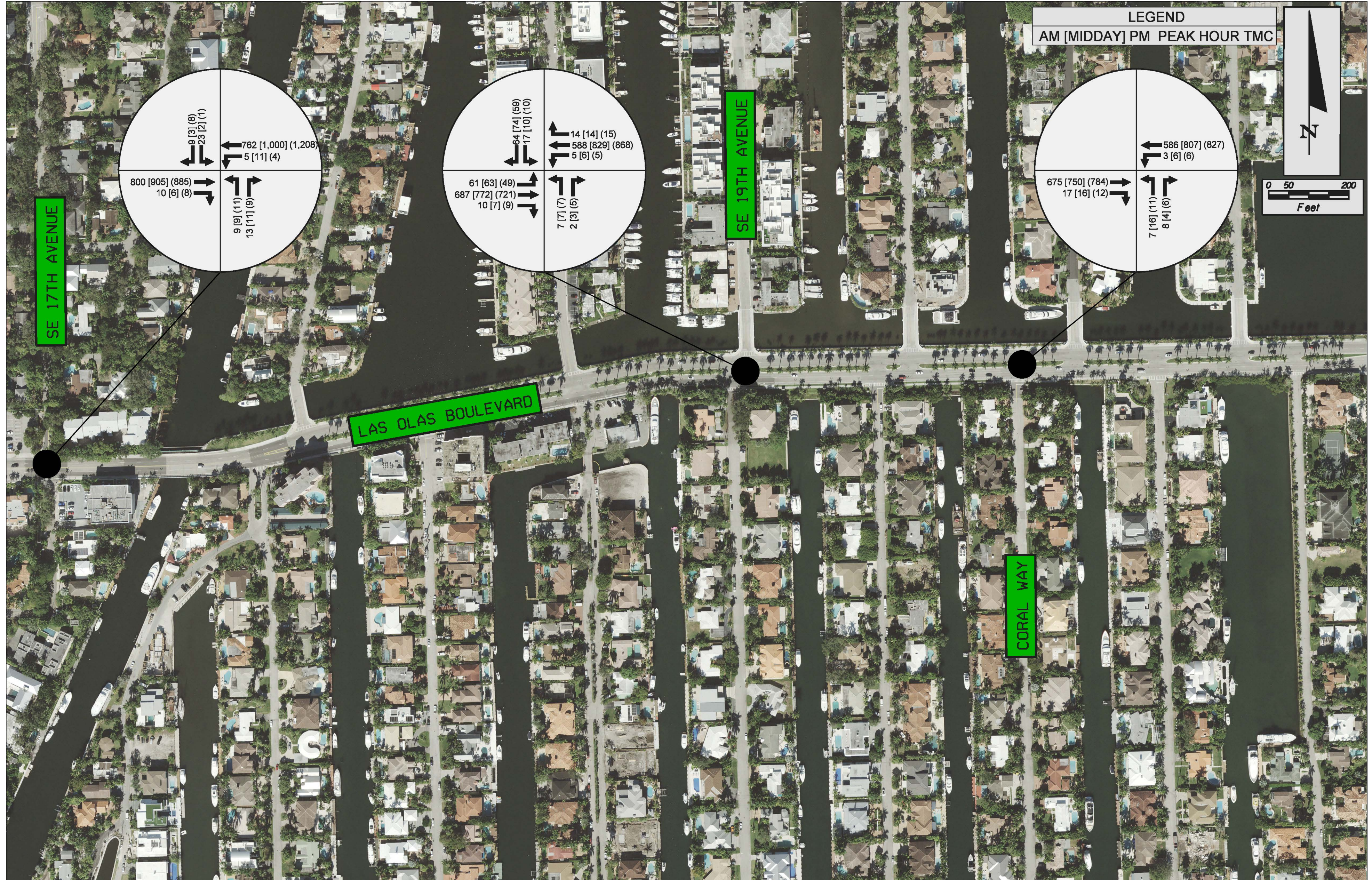
Existing + Committed



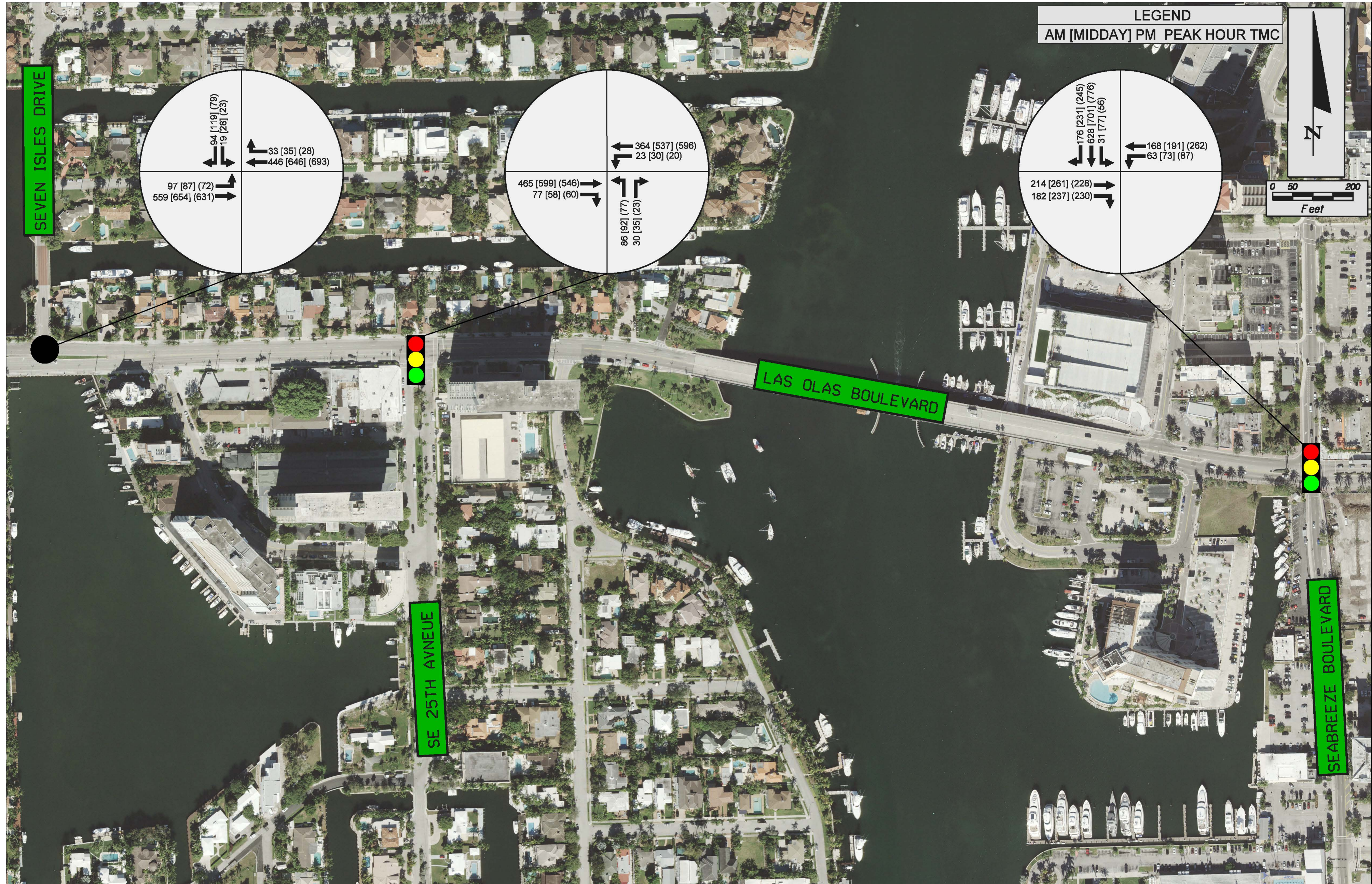
Existing + Committed



Existing + Committed



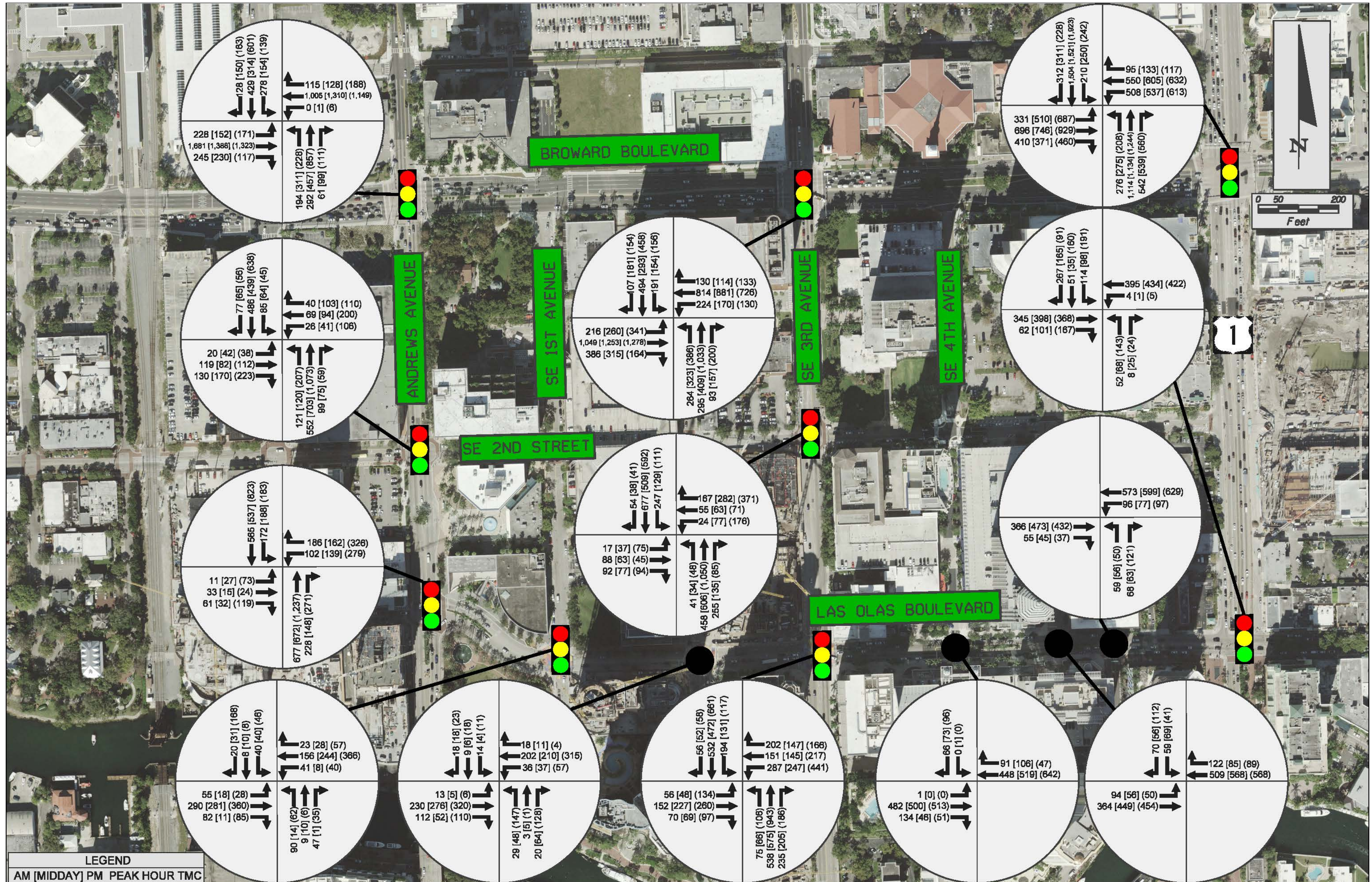
Existing + Committed



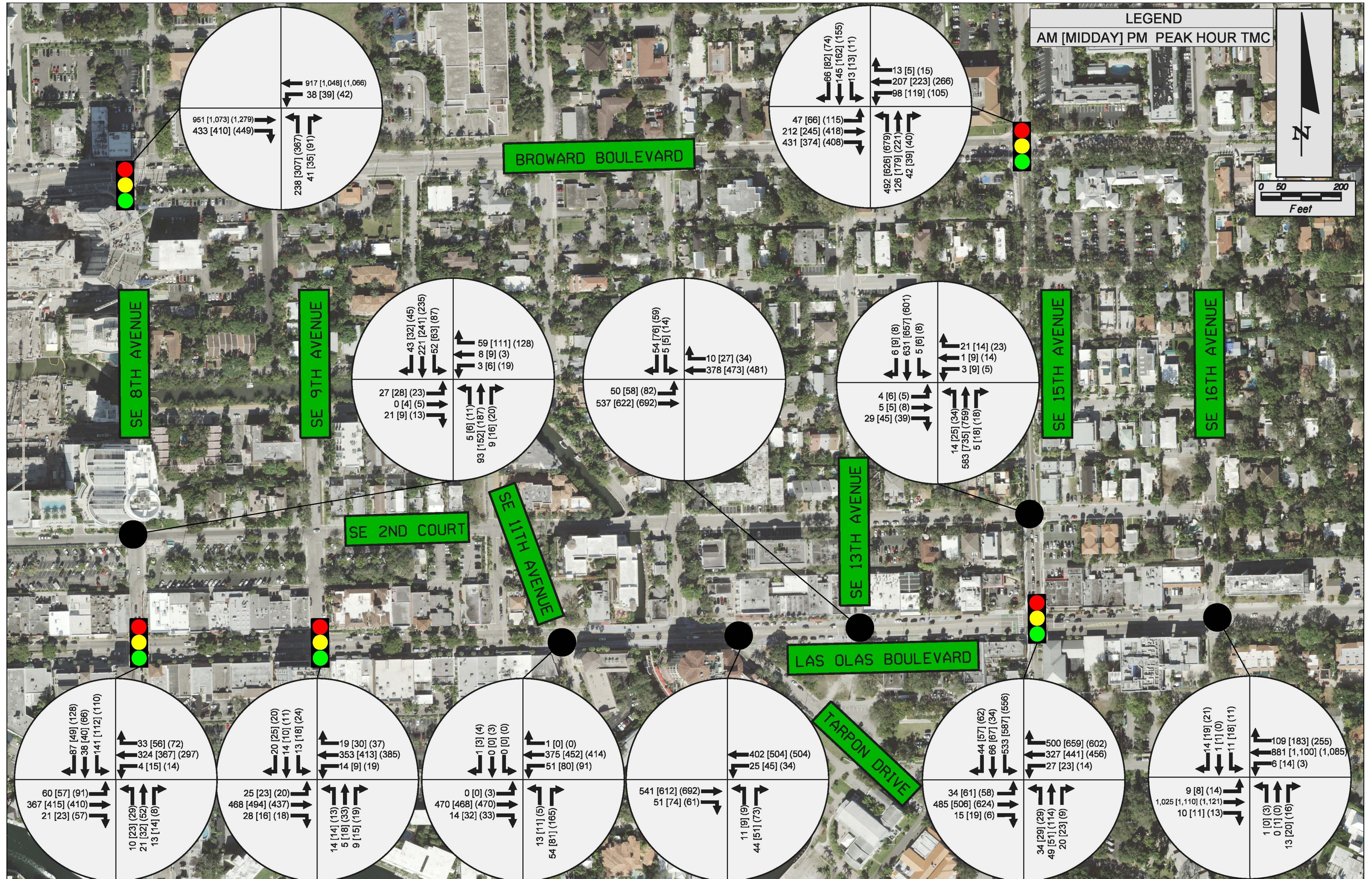
Future Segment LOS (2040)

Peak Hour Road Segment Level of Service Analysis				
Roadway Segment	Roadway Type	Future 2 Way Peak Hour Volumes	Peak Hour LOS D Volume	Level of Service
Seven Isles Drive to Seabreeze Blvd.	4 Lanes Undivided	2135	2482	C
Isles of Capri to Seven Isles Drive	4 Lanes Divided	2573	2628	C
SE 15th Avenue to Isles of Capri	4 Lanes Undivided	2959	2482	E
SE 11th Avenue to SE 15th Avenue	2 Lanes Undivided	1338	1197	E
SE 6th Avenue to SE 11th Avenue	2 Lanes Divided	1509	1264	E
Andrews Avenue to SE 6th Avenue	4 Lanes Undivided	1524	2482	C

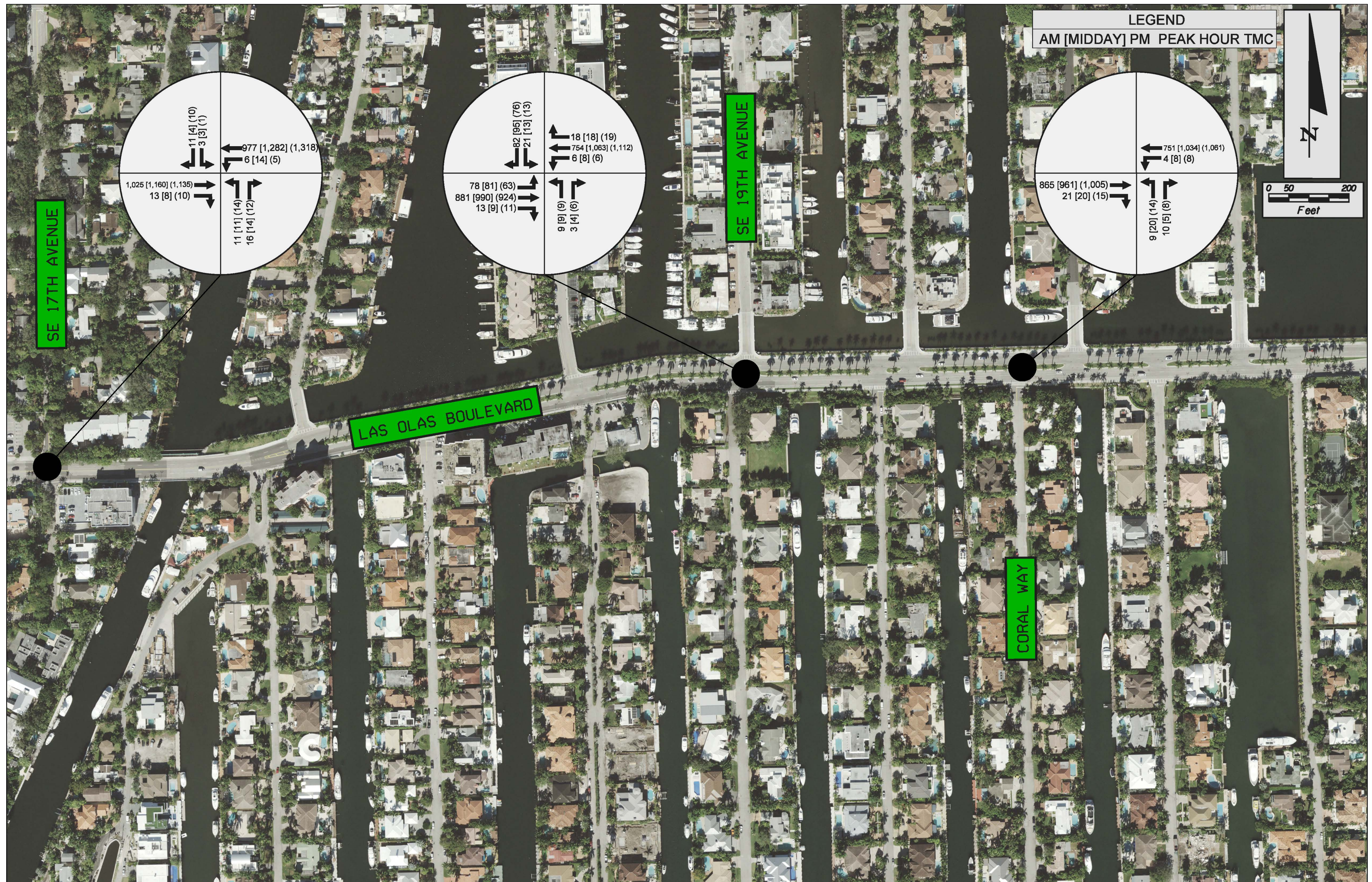
2040



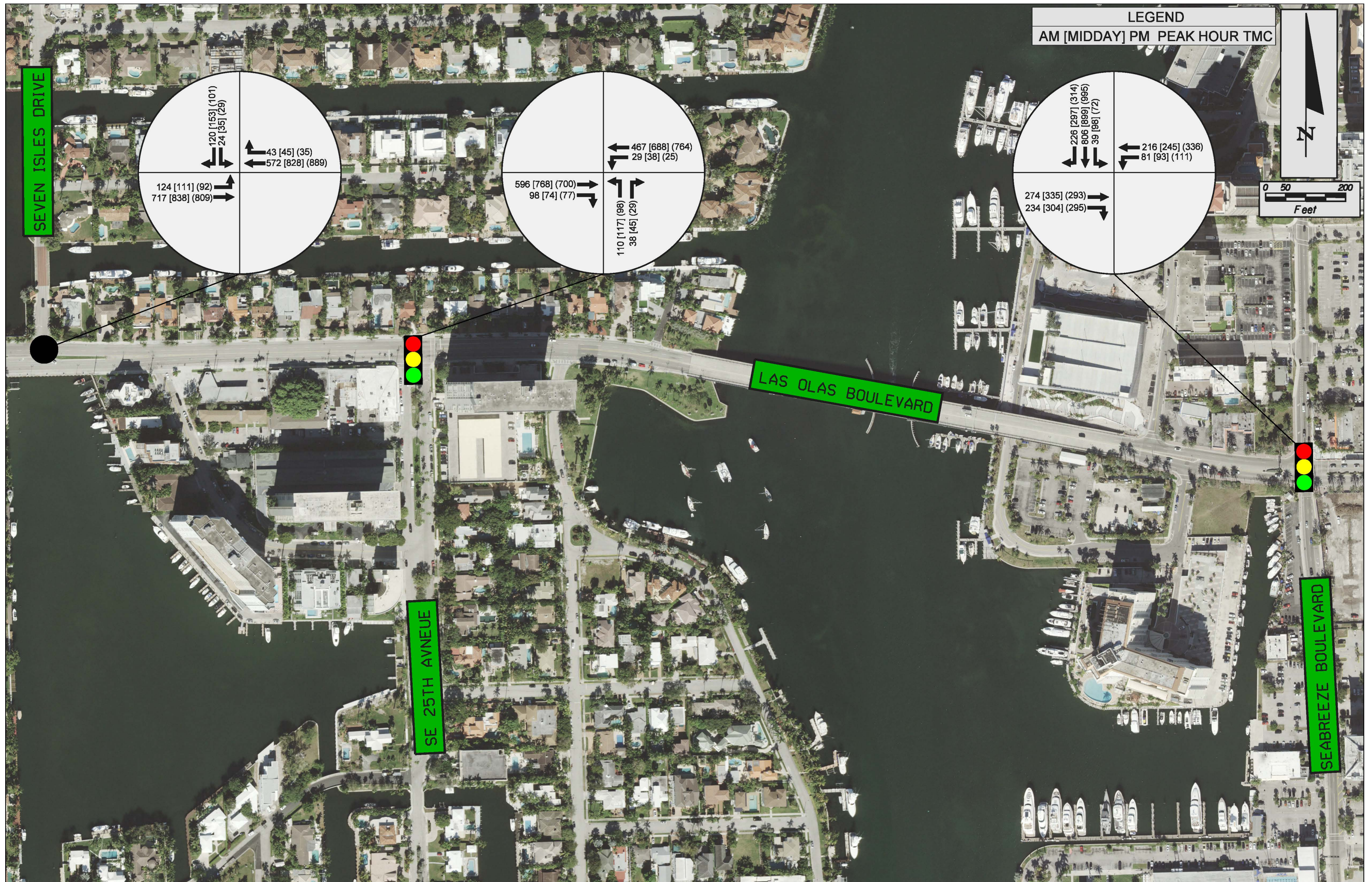
2040



2040



2040



Intersection Level of Service- AM Peak Hour Scenario

Intersection	E+C LOS (Delay)- 2020	Approach Delay 95th % Queue	Future LOS (Delay)- 2040	Future Delay 95th % Queue
Andrews Ave. and Las Olas Blvd.	B (15.9 s)	C (25.7 s) EBL 72 LF	B (18.2 s)	C (34.0 s) EBL 113 LF
Andrews Ave. and Broward Blvd.	D (54.6 s)	F (85.6 s) SBL 328 LF	E (58.1 s)	F (83.0 s) SBL 375 LF
SE 3rd Ave. and Las Olas Blvd.	E (57.8 s)	F (84.7 s) WBL 388 LF	E (76.0 s)	F (136.2 s) WBL 465 LF
SE 3rd Ave. and Broward Blvd.	E (67.0 s)	F (84.2 s) SBL 208 LF	E (69.1 s)	F (95.8 s) SBL 497 LF
US-1/SE 6th Ave. and Las Olas Blvd.	C (27.4 s)	D (38.3 s) WBL 94 LF	C (28.1 s)	D (41.0) WBT 315 LF
US-1/SE 6th Ave. and Broward Blvd.	E (56.2 s)	E (65.5 s) WBL 231 LF	E (76.5 s)	E (63.5 s) WBL 322 LF
SE 8th Ave. and Las Olas Blvd.	B (10.0 s)	B (12.2 s) WBL 4 LF	B (13.7 s)	B (17.1 s) EBL 190 LF
SE 8th Ave. and Broward Blvd.	A (8.9 s)	D (35.3 s) NBL 152 LF	B (10.5 s)	C (38.8 s) NBL 183 LF
SE 9th Ave. and Las Olas Blvd.	A (9.7 s)	B (10.2 s) EBL 13 LF	B (15.0 s)	B (17.4 s) EBL 213 LF
SE 25th Ave. and Las Olas Blvd.	A (9.0 s)	C (22.0 s) NBL 77 LF	A (9.6 s)	C (27.3 s) NBL 95 LF
Las Olas Blvd. and Seabreeze Blvd.	B (17.1 s)	C (28.0 s) EBT 94 LF	B (18.6 s)	C (28.6 s) EBT 148 LF
Las Olas Blvd. and Seven Isles Drive	C (15.6 s)	D (31.2 s) SBL 10 LF	C (16.5 s)	E (39.8 s) SBL 18 LF
Coral Way and Las Olas Blvd.	C (15.8 s)	C (15.8 s) NBL 3 LF	C (22.6 s)	C (22.6 s) NBL 8 LF
NE 19th and Las Olas Blvd.	E (42 s)	E (42 s) NBL 8 LF	F (71.3 s)	F (71.3 s) NBL 18 LF
NE 17th Ave. and Las Olas Blvd.	E (42 s)	E (42 s) NBL 8 LF	F (104.5 s)	F (104.5 s) NBL 36 LF

NE 16th Blvd. and Las Olas Blvd.	C (15.1 s)	C (15.1 s) NBL 3 LF	C (19.5 s)	C (19.5 s) NBL 5 LF
NE 15th Ave. and Las Olas Blvd.	B (19.3 s)	D (37.3 s) SBL 396 LF	C (33.5 s)	F (94.7 s) SBL 560 LF
SE 15th Ave. and Broward Blvd.	C (24.2 s)	C (30.8 s) WBL 77 LF	C (26.9 s)	D (40.7 s) EBL 66 LF
NE 15th Ave. and SE 2nd Court	C (15.1 s)	C (15.1 s) EBL 8 LF	C (20.1 s)	C (15.1 s) EBL 13 LF
SE 8th Ave. and SE 2nd Court	B (11.9 s)	B (11.9 s) EBL 5 LF	B (12.8 s)	B (12.8 s) EBL 8 LF
SE 3rd Ave. and SW 2nd Street	E (58.6 s)	E (68.0 s) NBL 13 LF	D (54.5 s)	E (67.0 s) NBL 18 LF
Andrews Ave. and SW 2nd Street	D (35.5 s)	D (37.6 s) WBL 37 LF	C (33.8 s)	D (43.3 s) WBL 43 LF
SE 1st Ave. and Las Olas Blvd.	A (8.6 s)	C (26.2 s) NB 80 LF	B (10.7 s)	C (28.7 s) NB 101 LF
SE 2nd Ave. and Las Olas Blvd.	A (9.0 s)	A (9.8 s) WBL 30 LF	B (11.2 s)	B (12.4 s) EBR 70 LF
SE 4th Ave. and Las Olas Blvd.	B (12.5 s)	B (17.2 s) EBL 201 LF	C (25.9 s)	C (32.1 s) EBT 326 LF
SE 5th Ave. and Las Olas Blvd.	B (14.5 s)	C (19.5 s) SBL 15 LF	C (24.1 s)	E (36.5 s) SBL 38 LF
New River Drive and Las Olas Blvd.	B (13.5 s)	C (18.0 s) NBL 13 LF	D (25.4 s)	E (41.4 s) NBL 43 LF
SE 11th Ave. and Las Olas Blvd.	C (18.9 s)	C (18.9 s) SBL 10 LF	C (15.5 s)	C (15.5 s) NBL 12 LF
Tarpon Drive and Las Olas Blvd.	B (11.7 s)	B (11.7 s) 8 LF	B (13.1 s)	B (13.1 s) 8 LF
SE 13th Ave. and Las Olas Blvd.	B (10.4 s)	B (10.4 s) 5 LF	B (11.3 s)	B (11.3 s) 8 LF

Intersection Level of Service- Midday Peak Hour Scenario

Intersection	E+C LOS (Delay)- 2020	Approach Delay 95th % Queue	Future LOS (Delay)- 2040	Future Delay 95th % Queue
Andrews Ave. and Las Olas Blvd.	B (17.3 s)	C (26.4 s) EBL 61 LF	C (20.3 s)	D (48.9 s) WBL 187 LF
Andrews Ave. and Broward Blvd.	E (55.4 s)	F (83.3 s) SBL 182 LF	E (61.3 s)	F (113.3 s) NBL 605 LF
SE 3rd Ave. and Las Olas Blvd.	E (60 s)	F (86.2 s) WBL 325 LF	E (74.4 s)	F (131.1 s) WBL 362 LF
SE 3rd Ave. and Broward Blvd.	E (68.1 s)	D (38.6 s) WBL 98 LF	E (71.5 s)	F (140.5 s) NBL 687 LF
US-1/SE 6th Ave. and Las Olas Blvd.	C (30 s)	D (38.6 s) WBL 98 LF	C (28.3 s)	D (38.5 s) WBL 374 LF
US-1/SE 6th Ave. and Broward Blvd.	E (56.3 s)	E (66.2 s) WBL 230 LF	F (81.2 s)	E (77.6 s) SBL 425 LF
SE 8th Ave. and Las Olas Blvd.	B (10.7 s)	B (13.1 s) WBL 10 LF	B (15.0 s)	B (17.7 s) EBL 207 LF
SE 8th Ave. and Broward Blvd.	B (10.8 s)	D (35.7 s) NBL 183 LF	B (13.4 s)	D (37.4 s) NBL 220 LF
SE 9th Ave. and Las Olas Blvd.	A (9.8 s)	B (10.4 s) EBL 13 LF	B (15.4 s)	B (17.6 s) EBL 220 LF
SE 25th Ave. and Las Olas Blvd.	A (9.5 s)	C (21.8 s) NBL 82 LF	B (10.3 s)	C (27.5 s) NBL 100 LF
Las Olas Blvd. and Seabreeze Blvd.	B (17.5 s)	C (26.9 s) EBT 137 LF	C (21.5 s)	C (30.7 s) EBT 198 LF
Las Olas Blvd. and Seven Isles Drive	C (18.3 s)	E (39.1 s) SBL 25 LF	D (28.8 s)	F (90.7 s) SBL 53 LF
Coral Way and Las Olas Blvd.	D (25.2 s)	D (25.2 s) NBL 10 LF	F (50.3 s)	F (50.3 s) NBL 23 LF
NE 19th and Las Olas Blvd.	E (49.3 s)	E (49.3 s) NBL 10 LF	F (172 s)	F (172 s) NBL 35 LF
NE 17th Ave. and Las Olas Blvd.	F (72.4 s)	F (72.4 s) NBL 15 LF	F (434.7 s)	F (434.7 s) NBL 83 LF

NE 16th Blvd. and Las Olas Blvd.	C (16.2 s)	C (16.2 s) NBL 3 LF	C (24.5 s)	C (24.5 s) NBL 10 LF
NE 15th Ave. and Las Olas Blvd.	C (21.8 s)	D (44.2 s) SBL 452 LF	D (46.2 s)	F (150 s) SBL 632 LF
SE 15th Ave. and Broward Blvd.	D (37.9 s)	E (56.7 s) SBL 815 LF	D (37.5 s)	E (58.9 s) NBL 584 LF
NE 15th Ave. and SE 2nd Court	C (22.9 s)	C (22.9 s) WBL 8 LF	E (46.3 s)	C (22.9 s) WBL 28 LF
SE 8th Ave. and SE 2nd Court	B (13.5 s)	B (13.5 s) EBL 5 LF	C (16.7 s)	B (16.7 s) EBL 10 LF
SE 3rd Ave. and SW 2nd Street	E (60.6 s)	E (72.6 s) NBL 15 LF	E (55.6 s)	E (69.7 s) NBL 22 LF
Andrews Ave. and SW 2nd Street	C (34.1 s)	D (41.3 s) WBL 50 LF	C (32.8 s)	D (40.9 s) WBL 57 LF
SE 1st Ave. and Las Olas Blvd.	A (5.5 s)	C (25.6 s) NBL 25 LF	A (6.7 s)	C (25.3 s) NBL 29 LF
SE 2nd Ave. and Las Olas Blvd.	A (9.3 s)	B (10.2 s) WBL 33 LF	B (11.5 s)	B (10.7 s) WBL 40 LF
SE 4th Ave. and Las Olas Blvd.	B (11.3 s)	B (15.1 s) EBT 162 LF	C (27.2 s)	C (34.4 s) WBT 334 LF
SE 5th Ave. and Las Olas Blvd.	C (15.5 s)	C (19.6 s) SBL 18 LF	D (29.0 s)	E (41.2 s) SBL 50 LF
New River Drive and Las Olas Blvd.	B (12.6 s)	C (15.6 s) NBL 10 LF	D (29.1 s)	E (47.7 s) NBL 48 LF
SE 11th Ave. and Las Olas Blvd.	B (13.0 s)	B (13.0 s) NBL 13 LF	C (16.3 s)	C (16.3 s) NBL 23 LF
Tarpon Drive and Las Olas Blvd.	B (12.5 s)	B (12.5 s) NBL 8 LF	B (14.7 s)	B (14.7 s) NBL 13 LF
SE 13th Ave. and Las Olas Blvd.	B (11.3 s)	B (11.3 s) WBR 10 LF	B (12.8 s)	B (12.8 s) WBR 15 LF

Intersection Level of Service- PM Peak Hour Scenario

Intersection	E+C LOS (Delay)- 2020	Approach Delay 95th % Queue	Future LOS (Delay)- 2040	Future Delay 95th % Queue
Andrews Ave. and Las Olas Blvd.	C (34.7 s)	D (53.9 s) EBL 222 LF	F (86.8 s)	F (182.2 s) NBT 2455 LF
Andrews Ave. and Broward Blvd.	E (63.3 s)	F (88.4 s) NBL 255 LF	E (74.1 s)	F (123.4 s) NBL 353 LF
SE 3rd Ave. and Las Olas Blvd.	E (62.7 s)	F(78.9 s) EBL 190 LF	F (107.7 s)	F(299.9 s) WBL 1138 LF
SE 3rd Ave. and Broward Blvd.	F (90.2 s)	F (110.3 s) NBL 416 LF	F (102.5 s)	F (115.7 s) NBL 1034 LF
US-1/SE 6th Ave. and Las Olas Blvd.	C (23.9 s)	D (41.8 s) WBL 140 LF	C (27.9 s)	D (38.5 s) EBT 406 LF
US-1/SE 6th Ave. and Broward Blvd.	E (66 s)	E (69.7 s) SBL 273 LF	F (125.7 s)	F (173.6 s) SBL 400 LF
SE 8th Ave. and Las Olas Blvd.	A (9.8 s)	B (12.0 s) WBL 9 LF	B (14.3 s)	B (17.0 s) EBT 247 LF
SE 8th Ave. and Broward Blvd.	B (12.5 s)	C (33.1 s) NBL 209 LF	B (16.6 s)	C (36.1 s) NBL 248 LF
SE 9th Ave. and Las Olas Blvd.	A (9.6 s)	B (10.1 s) EBL 11 LF	B (15.2 s)	B (16.6 s) EBT 191 LF
SE 25th Ave. and Las Olas Blvd.	A (9.2 s)	C (22.5 s) NBL 71 LF	B (10.0 s)	C (26.8 s) NBL 87 LF
Las Olas Blvd. and Seabreeze Blvd.	B (18.0 s)	C (27.6 s) WBL 72 LF	C (22.4 s)	C (25.2 s) WBL 75 LF
Las Olas Blvd. and Seven Isles Drive	C (18.2 s)	E (36 s) SBL 20 LF	D (28.2 s)	F (78 s) SBL 40 LF
Coral Way and Las Olas Blvd.	C (23 s)	C (23 s) NBL 8 LF	E (43.9 s)	E (43.9 s) NBL 18 LF
NE 19th and Las Olas Blvd.	E (36.6 s)	E (36.6 s) NBL 8 LF	F (100.6 s)	F (100.6 s) NBL 28 LF
NE 17th Ave. and Las Olas Blvd.	F (69 s)	F (69 s) NBL 15 LF	F (511.6 s)	F (511.6 s) NBL 90 LF

NE 16th Blvd. and Las Olas Blvd.	B (13.4 s)	B (13.4 s) SBL 8 LF	C (15.9 s)	C (15.9 s) SBL 8 LF
NE 15th Ave. and Las Olas Blvd.	C (20.4 s)	D (41.3 s) SBL 412 LF	D (41.0 s)	F (132.5 s) SBL 596 LF
SE 15th Ave. and Broward Blvd.	E (64.4 s)	F (109.1 s) SBL 924 LF	E (70.5 s)	F (166.3 s) EBT 583 LF
NE 15th Ave. and SE 2nd Court	C (22.5 s)	C (22.5 s) WBL 13 LF	E (39.5 s)	E (39.5 s) WBL 30 LF
SE 8th Ave. and SE 2nd Court	B (13.2 s)	B (13.2 s) EBL 5 LF	C (18.2 s)	C (18.2 s) EBL 13 LF
SE 3rd Ave. and SW 2nd Street	D (42.7 s)	D (49.7 s) NBL 28 LF	D (39.2 s)	D (48.4 s) NBL 40 LF
Andrews Ave. and SW 2nd Street	D (36.5 s)	D (45.8 s) WBL 93 LF	D (54.4 s)	F (95.2 s) NBT 581 LF
SE 1st Ave. and Las Olas Blvd.	A (7.1 s)	C (25.4 s) NBL 59 LF	A (9.5 s)	C (32.7 s) NBL 77 LF
SE 2nd Ave. and Las Olas Blvd.	B (11.7 s)	B (14.4 s) WBL 73 LF	C (21.9 s)	D (31.7 s) EBT 208 LF
SE 4th Ave. and Las Olas Blvd.	B (13.9 s)	B (15.6 s) EBT 169 LF	D (37.9 s)	D (53.3 s) WBT 385 LF
SE 5th Ave. and Las Olas Blvd.	B (12.5 s)	B (17.2 s) SBL 10 LF	C (20.2 s)	D (32.5 s) SBL 25 LF
New River Drive and Las Olas Blvd.	B (12.8 s)	C (19.4 s) NBL 13 LF	C (23.8 s)	E (49.6 s) NBL 45 LF
SE 11th Ave. and Las Olas Blvd.	C (24.4 s)	C (24.4 s) SBL 3 LF	C (18.0 s)	C (18.0 s) SBL 3 LF
Tarpon Drive and Las Olas Blvd.	B (13.5 s)	B (13.5 s) WBL 3 LF	C (16.8 s)	C (16.8 s) NBL 23 LF
SE 13th Ave. and Las Olas Blvd.	B (11.3 s)	B (11.3 s) SBL 8 LF	B (12.8 s)	B (12.8 s) SBL 13 LF

17th Street



The Shops

Character Area

The Shops possess a pedestrian scale and an iconic green canopy that support its role as a premier shopping strip.



Inspiration Board Examples

Recap from prior discussion -

What we heard:

1. Make it better for pedestrians and to support businesses
2. Some of the sidewalks are very narrow
3. ADA Accessibility is an issue, and a safety concern at crosswalks
4. Want to keep a "European" feel
5. Shade trees are part of the charm
6. Drainage is a concern
7. Assume that events can still take place like in the past – how many is a matter of future City Policy and outside our scope



Mexico City, Mexico



Bonn, Germany



Georgia St., Indianapolis



Ljubljana, Slovenia



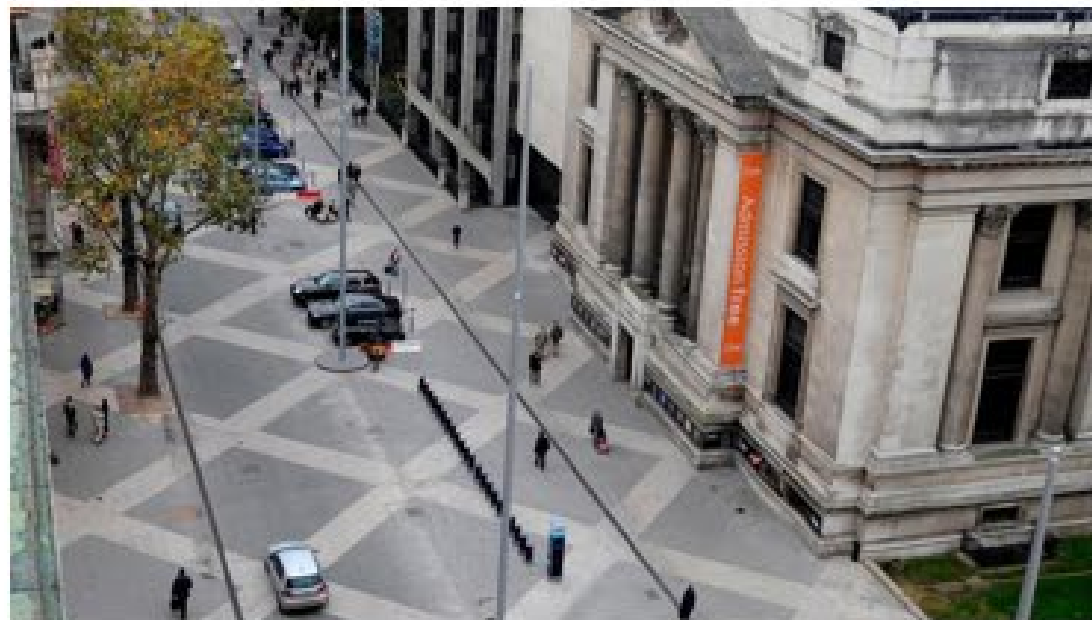
Nicolette Mall, Minneapolis



Milan, Italy



Seattle, Washington



London, UK



Midtown Miami



Seattle, Washington

Clematis Street

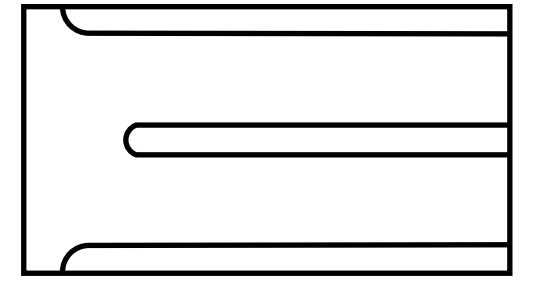




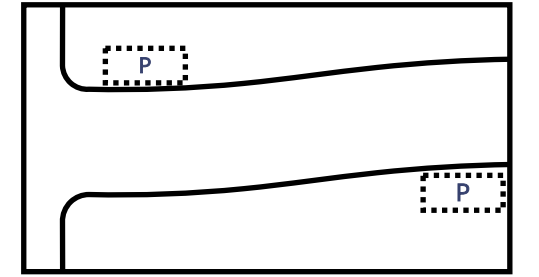
60' ROW
Creates limitations for options

OPTION 1

Existing



Wavy Chicane Alternative



VARIABLES
SIDEWALK

12'
TRAVEL LANE

12'
TRAVEL LANE

VARIABLES
SIDEWALK

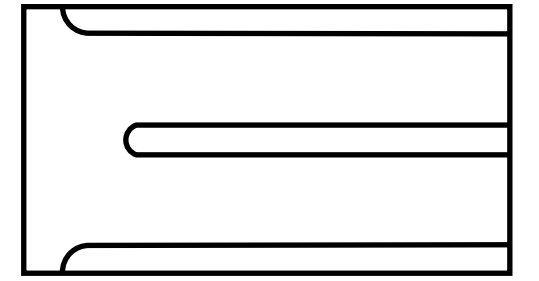
260%
Increase in
walkable area

OPTION 1

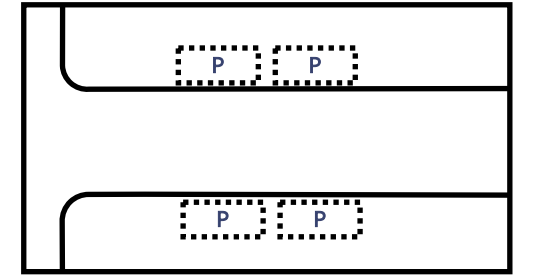


OPTION 2

Existing



Curbless Alternative



14'
SIDEWALK

12'
TRAVEL LANE

12'
TRAVEL LANE

8'
CURB MANAGEMENT

14'
SIDEWALK

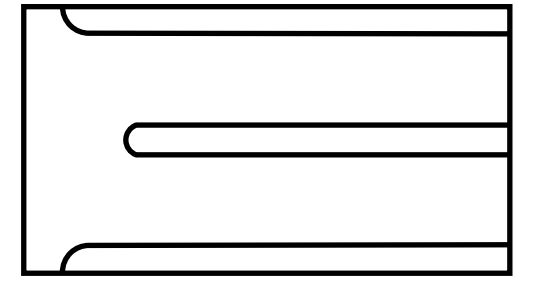
200%
Increase in
walkable area

OPTION 2

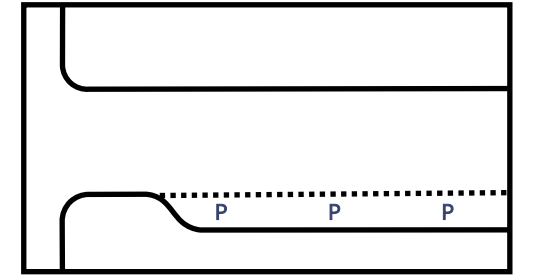


OPTION 3

Existing



Conventional Alternative



200%

Increase in walkable area

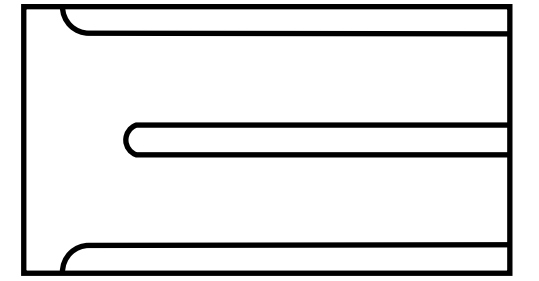


OPTION 3

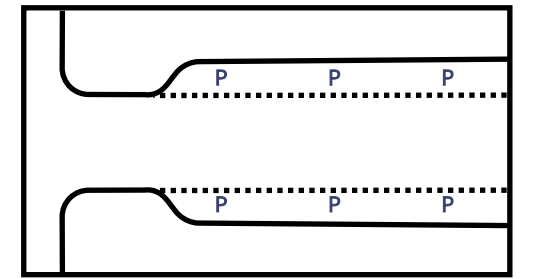


OPTION 4

Existing



Median Elimination Alternative



20%
Increase in
walkable area

6' 5' 8' 11' 11' 8' 5' 6'
SIDEWALK CURB MANAGEMENT TRAVEL LANE TRAVEL LANE CURB MANAGEMENT SIDEWALK

OPTION 4



Thank You

Las Olas Boulevard

Fort Lauderdale's Portal to the Beach

