



# Riverland Road Traffic Calming Improvements

City of Fort Lauderdale



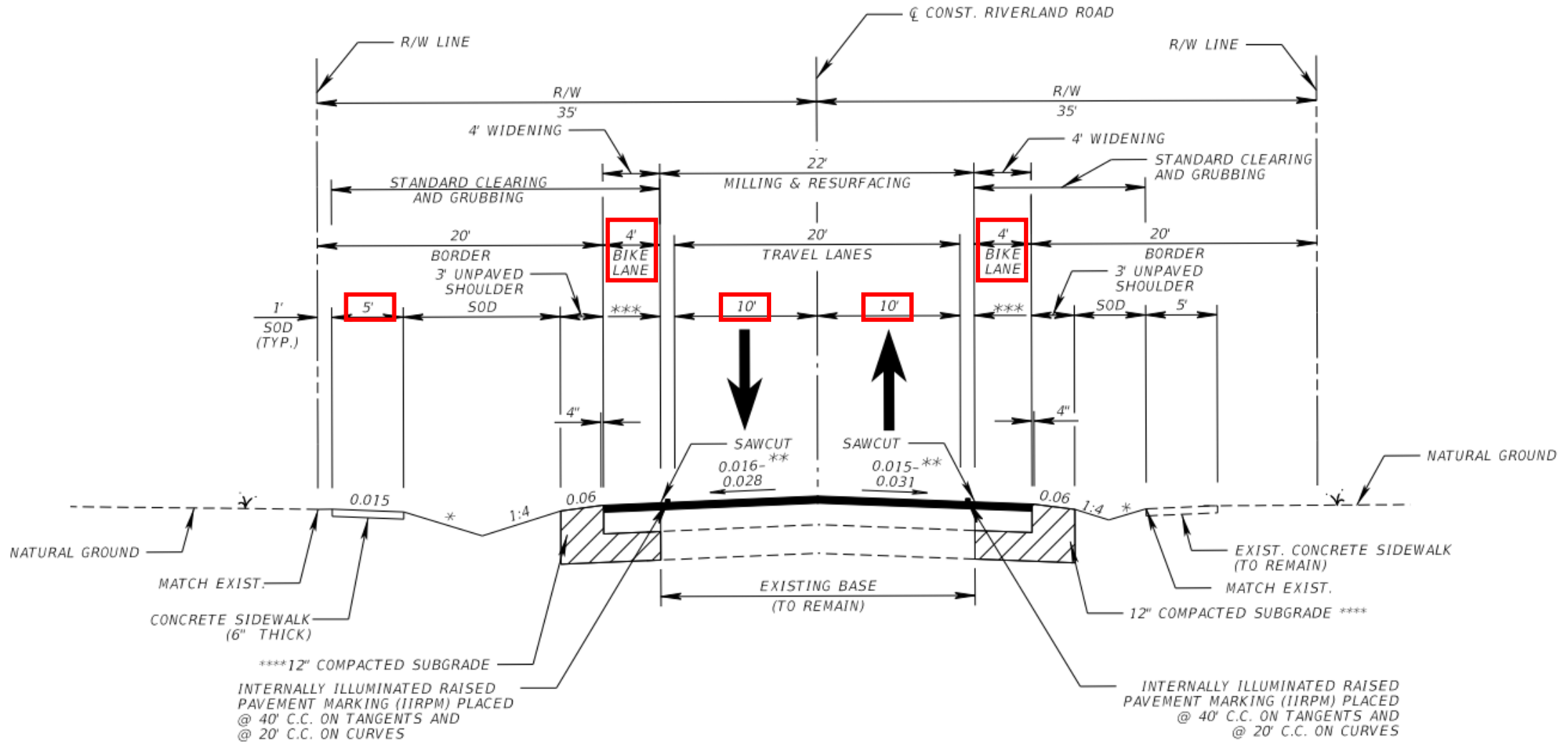
Kimley»»Horn

# 2015 Public Involvement

- Review of Public Input
  - Speeding in the area is a major concern
  - No consensus on specific traffic calming improvement locations
  - Comments provided additional feedback regarding other improvements including lighting



# FDOT Typical Section



# Scope of Services

- Provide traffic calming to be installed after FDOT project July 2022
- Provide Raised Intersections at up to 5 locations
- Provide Pedestrian Refuge Island between SR-7 and Tortugas Lane
- Lighting, Landscape, entry features, etc. are not part of this project

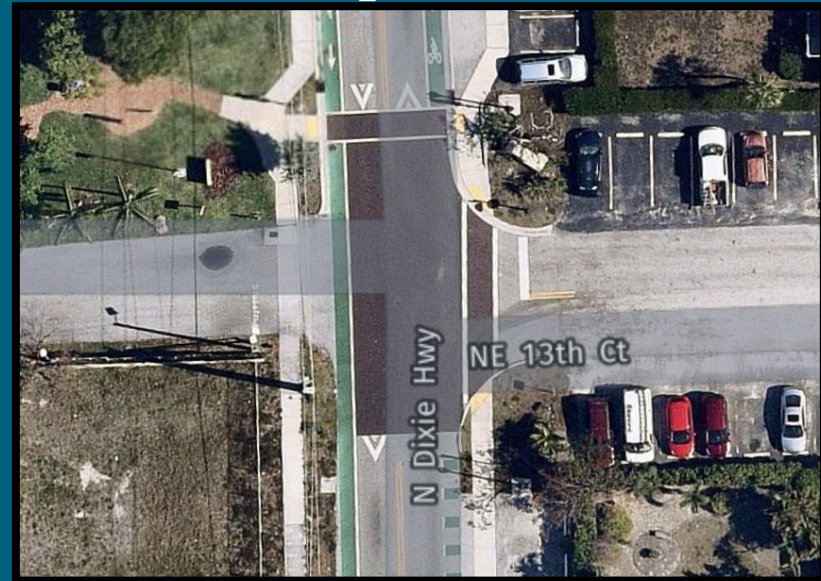
# Raised Intersection – Vertical Deflection



Raised Intersection shown in Yellow.

\*Other features shown on this graphic are not part of this project

# Sample Raised Intersection



# FHWA Applicability and Acceptability of Individual Traffic Calming Measures

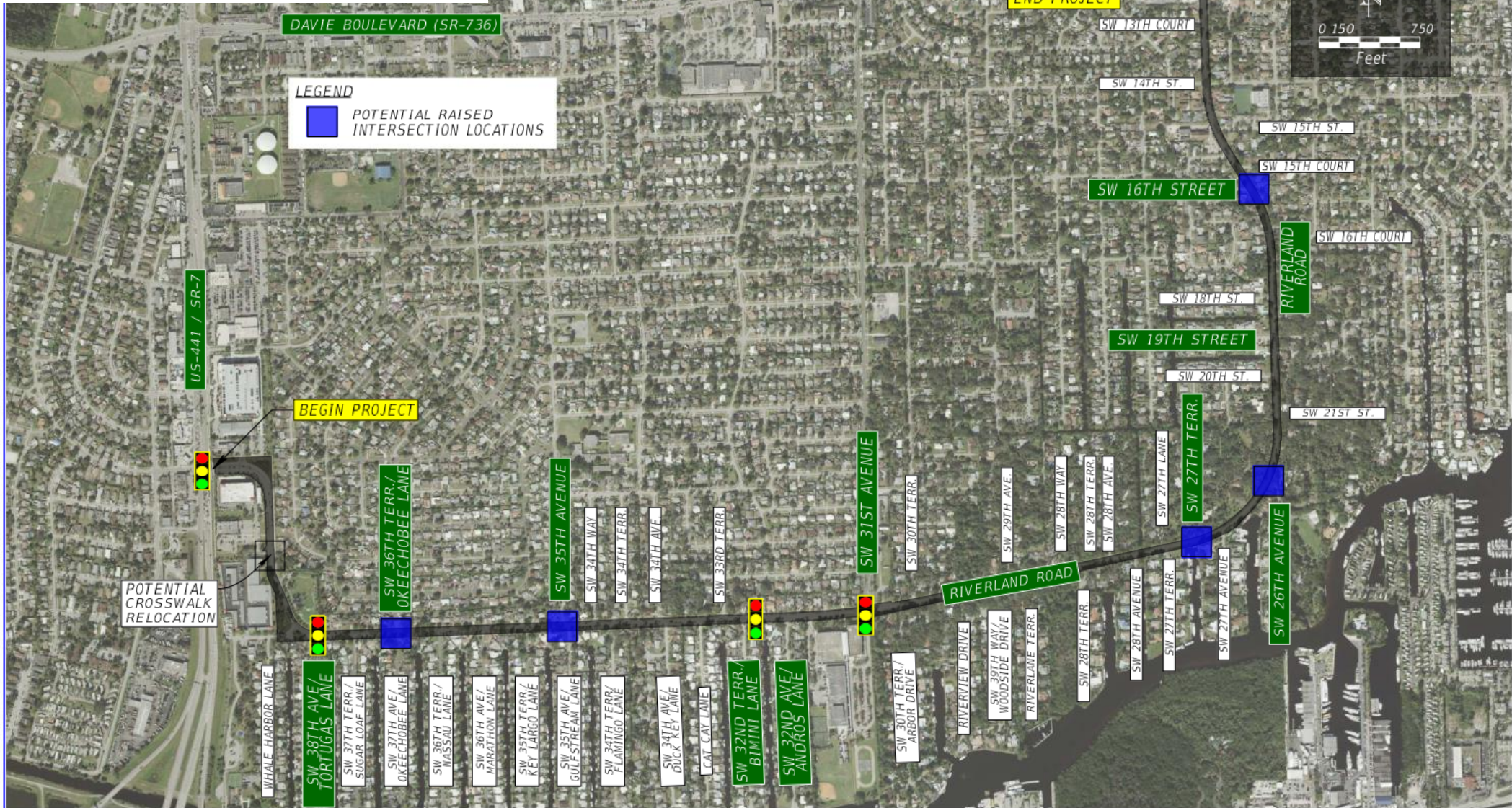
## Table 3.1. Likelihood of Acceptability of Traffic Calming Measure

Traffic Calming Measure	Segment or Intersection	Functional Classification			Street Function	
		Thoroughfare or Major	Collector or Residential Collector	Local or Local Residential	Emergency Access	Transit Route
<b>Horizontal Deflection</b>						
Lateral Shift	Segment	3	5	5	5	5
Chicane	Segment	1	5	5	3	3
Realigned Intersection	Intersection	1	5	5	5	5
Traffic Circle	Intersection	1	3	5	3	3
Small Modern & Mini-Roundabout	Intersection	3	3	5	5	5
Roundabout	Intersection	5	3	1	5	5
<b>Vertical Deflection</b>						
Speed Hump	Segment	1	5	5	1	3
Speed Cushion	Segment	1	5	5	5	5
Speed Table	Segment	3	5	5	1	3
Offset Speed Table	Segment	3	5	5	5	3
Raised Crosswalk	Both	3	5	5	1	3
Raised Intersection	Intersection	3	5	5	3	3

**Legend:**

- 5 – traffic calming measure may be appropriate
- 3 – caution; traffic calming measure could be inappropriate
- 1 – traffic calming measure is likely inappropriate

# Project Limits



RIVERLAND ROAD  
TRAFFIC CALMING IMPROVEMENTS

Kimley **Horn**

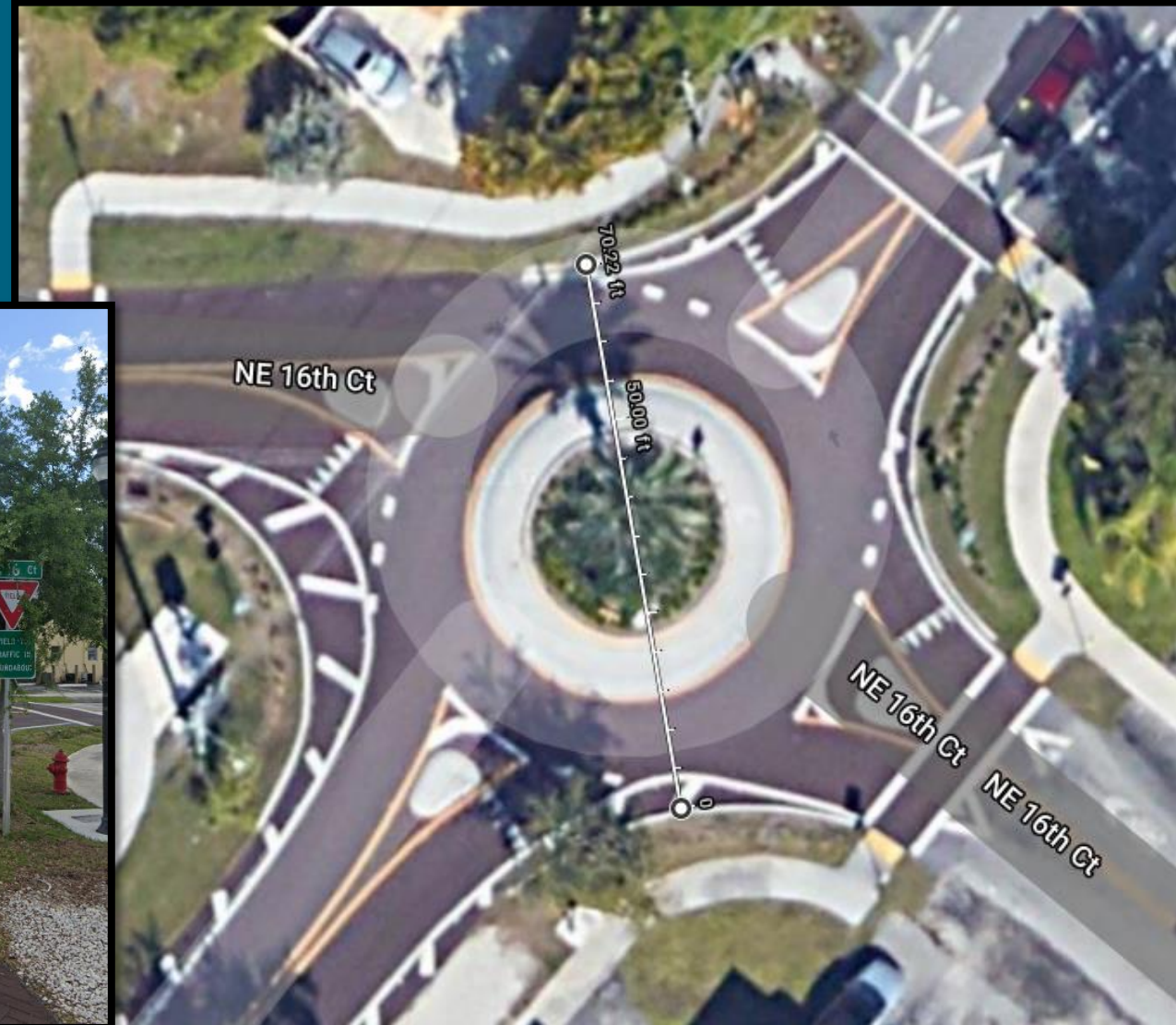
FIGURE 1  
LOCATION MAP

SHEET NO.  
1

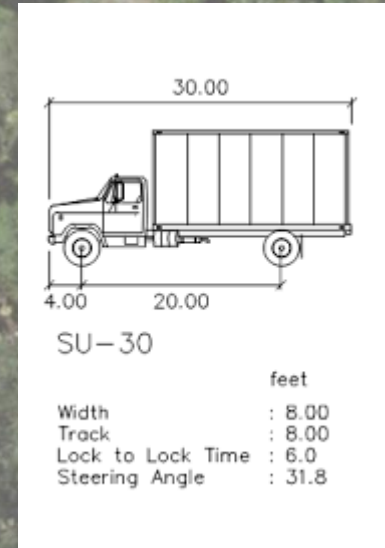
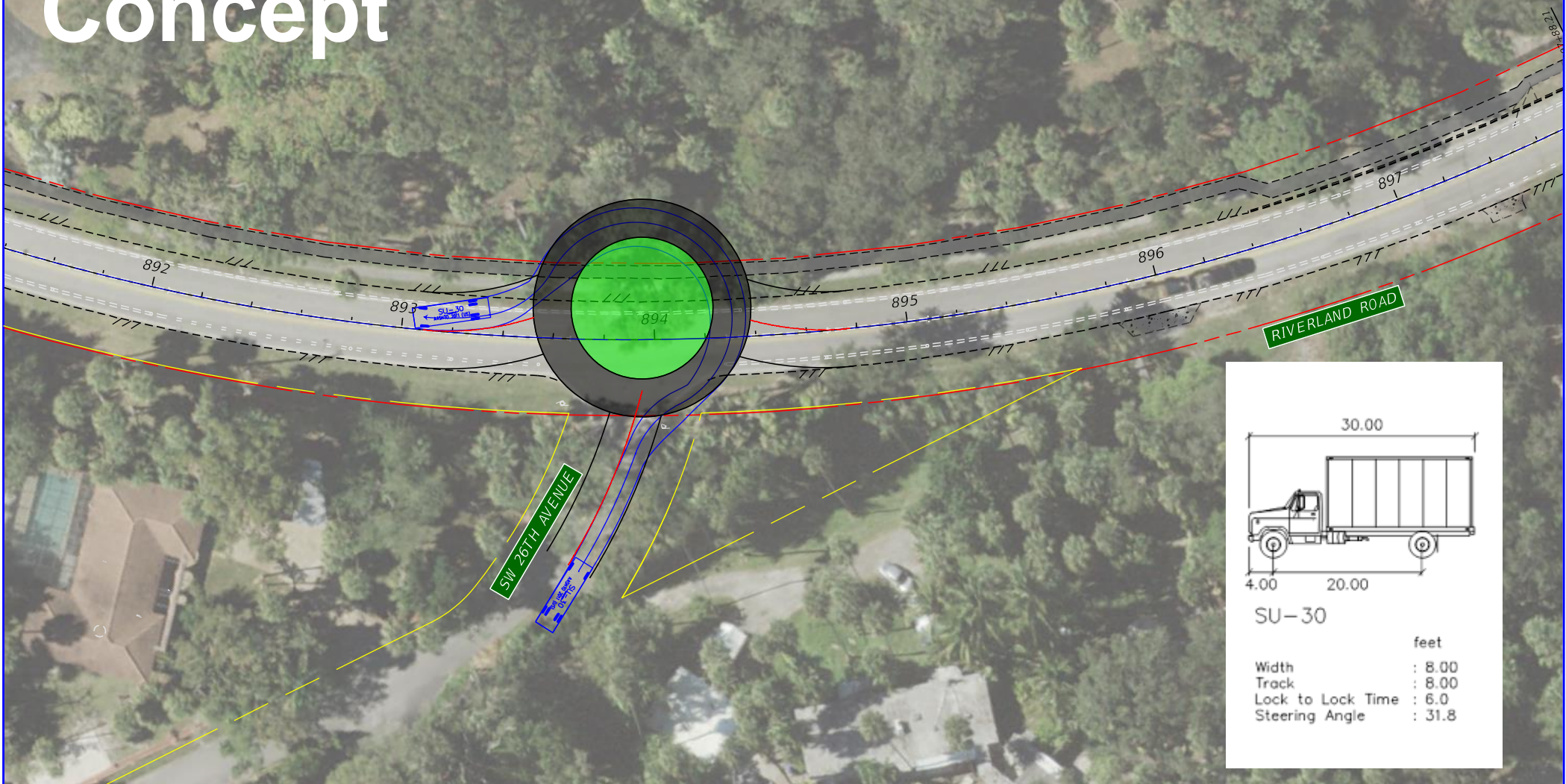
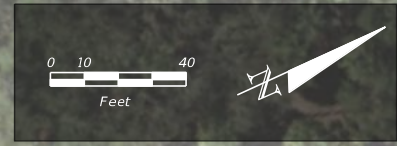


# Traffic Calming Features Considered – Horizontal Deflection Roundabouts

- Major roadway intersection modification
- Large footprint
- Lack of available right-of-way



# Mini Roundabout Concept



RIVERLAND ROAD  
TRAFFIC CALMING IMPROVEMENTS

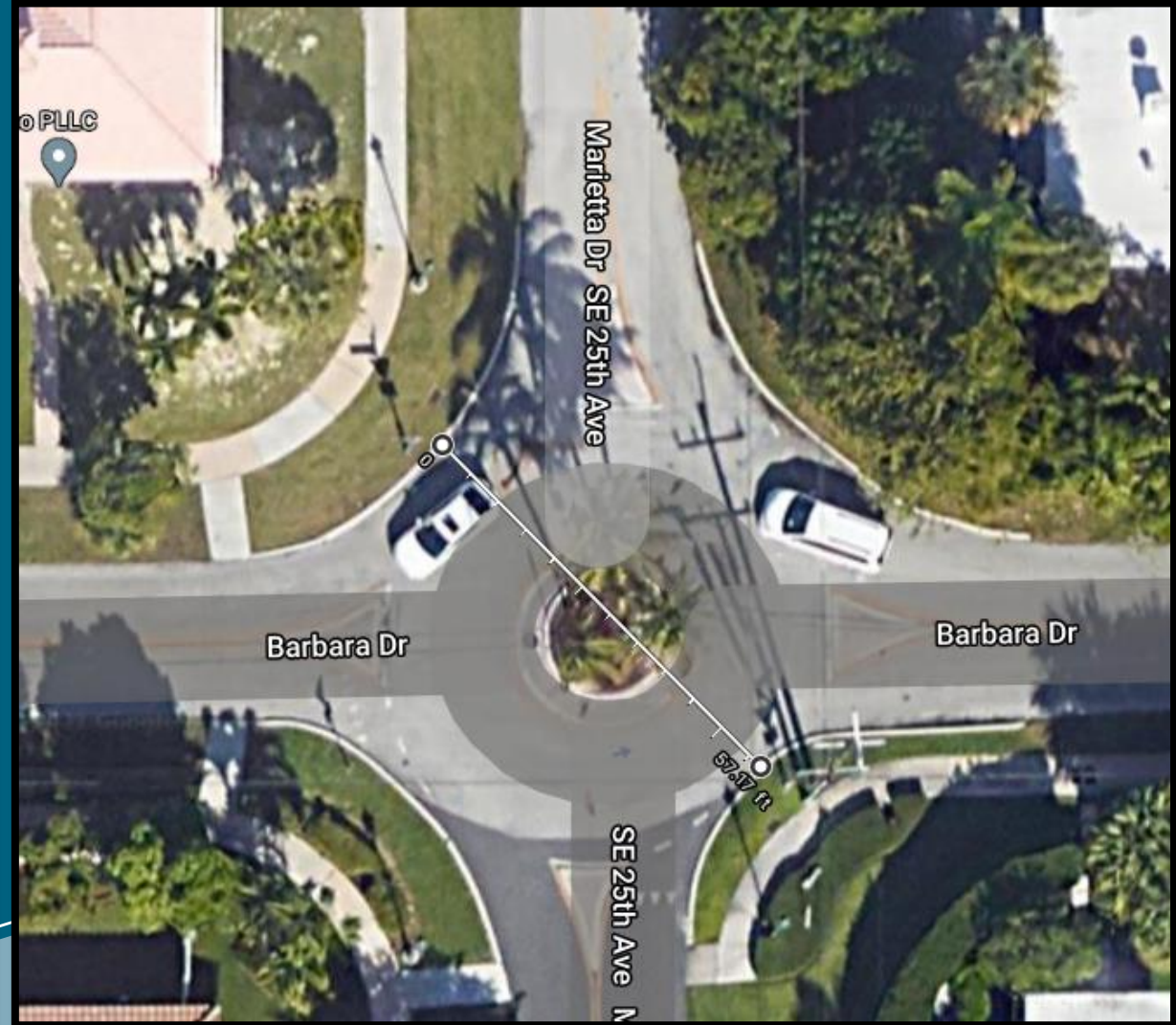
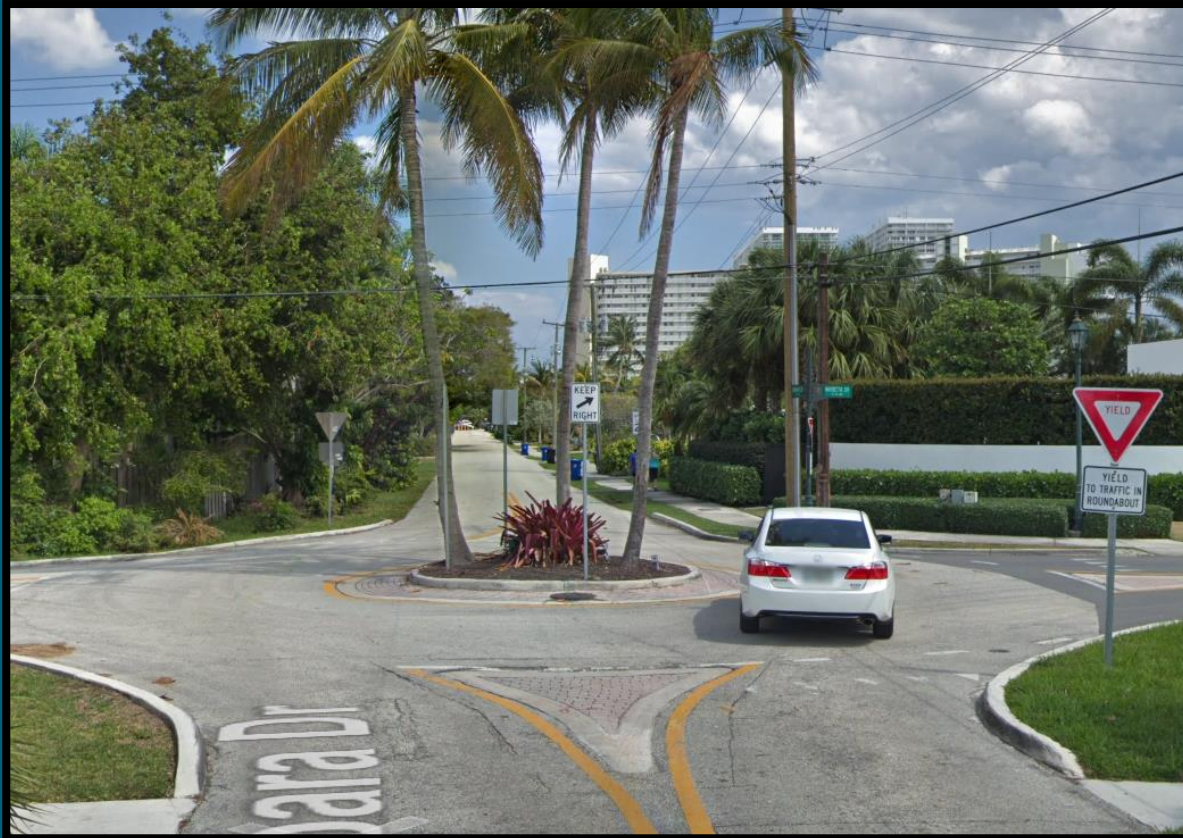
Kimley»Horn

FIGURE 2  
SW 26TH AVENUE

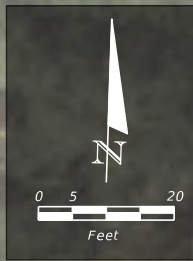
SHEET NO.  
2

# Traffic Calming Features Considered – Horizontal Deflection Traffic Circle

- Challenging for Standard Truck Turn Movements (i.e. Bus, Delivery and Garbage)



# Traffic Circle



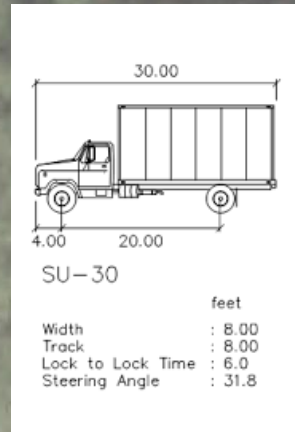
EXISTING ROW (TYP)

SW 19TH STREET

SU-30  
AASHTO 2011 (US)

905

904

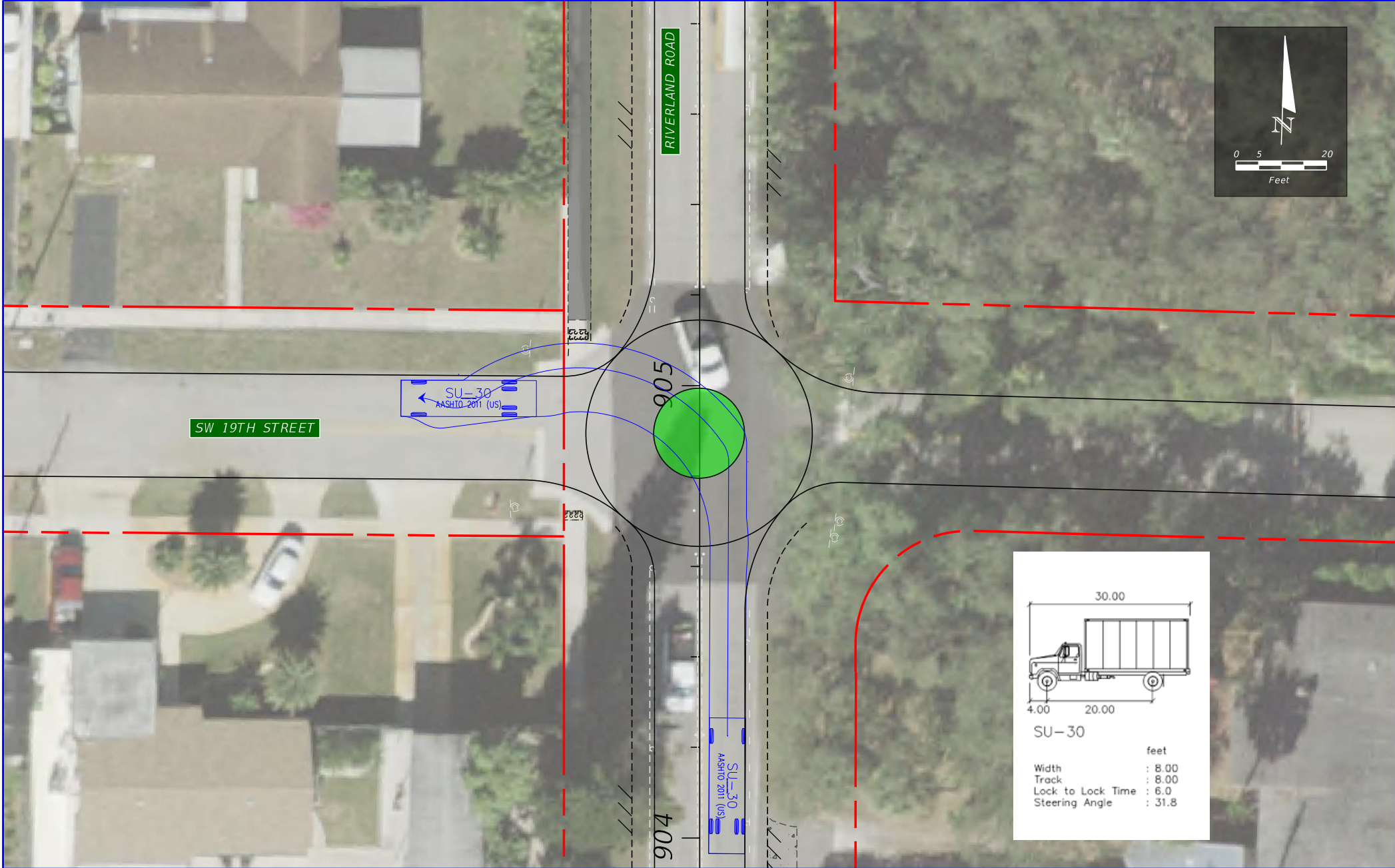


RIVERLAND ROAD  
TRAFFIC CALMING IMPROVEMENTS

Kimley»Horn

FIGURE 3  
SW 19TH STREET

SHEET NO.  
2

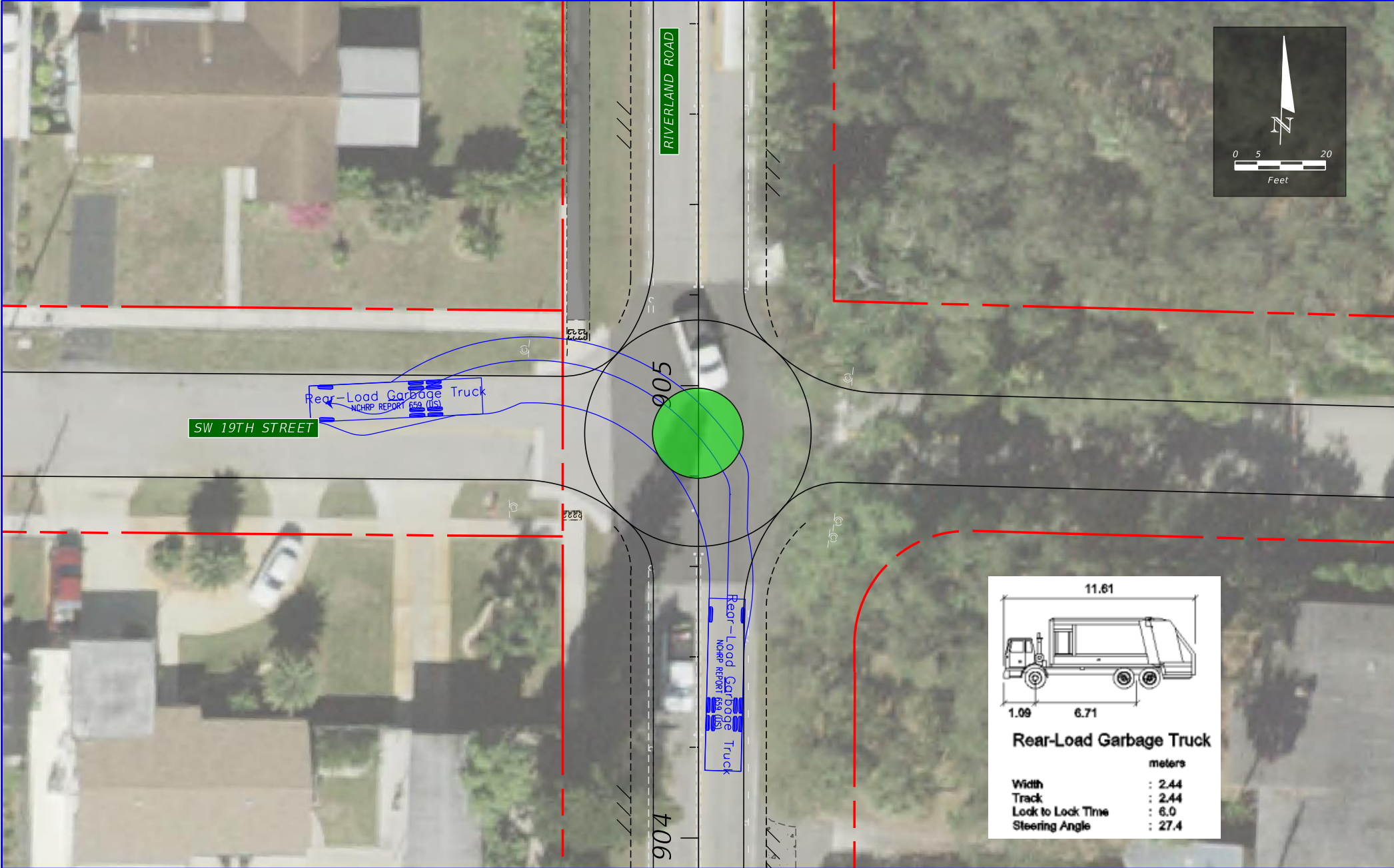


**RIVERLAND ROAD  
TRAFFIC CALMING IMPROVEMENTS**

**Kimley»Horn**

**FIGURE 3  
SW 19TH STREET**

SHEET  
NO.  
2

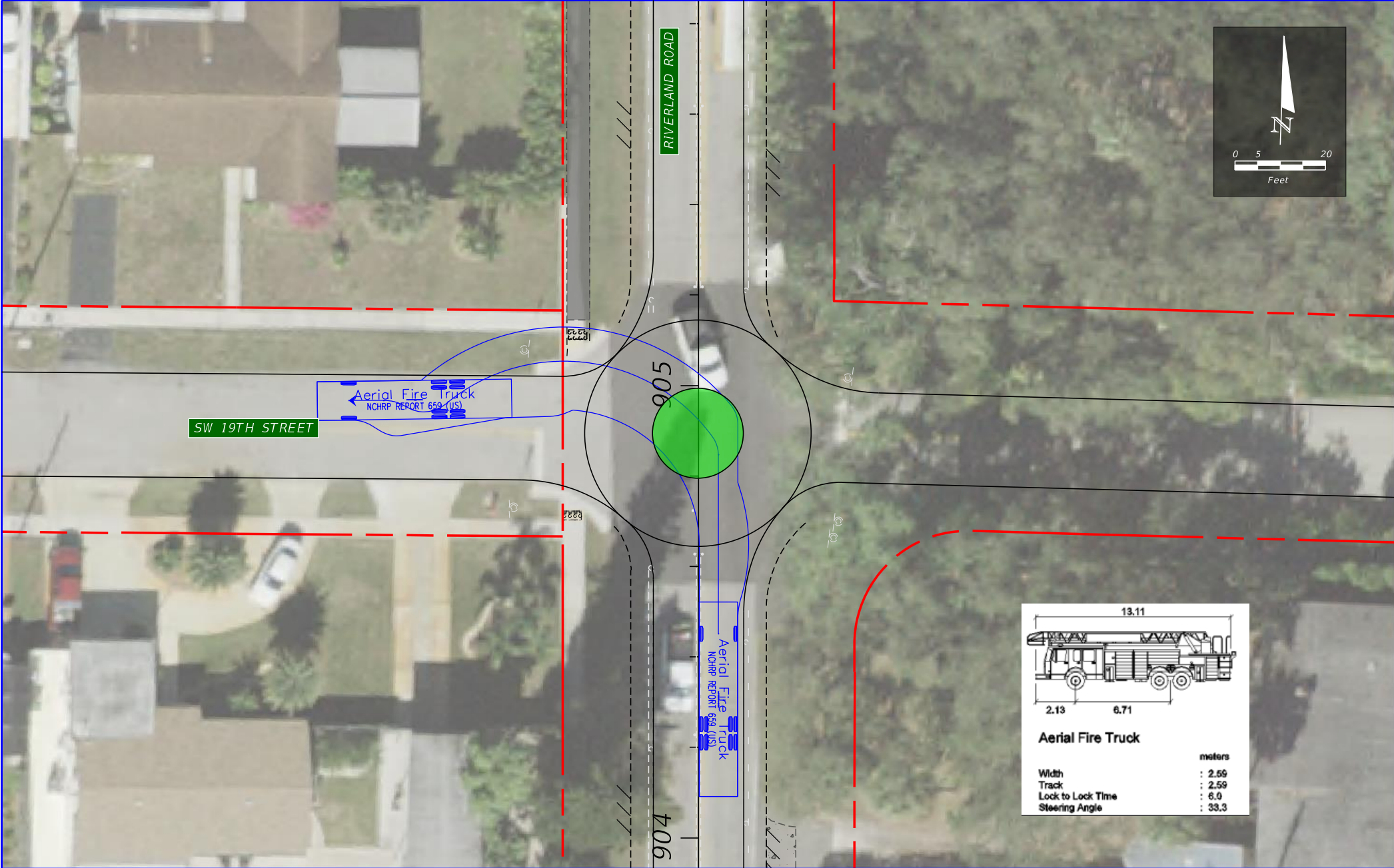


RIVERLAND ROAD  
TRAFFIC CALMING IMPROVEMENTS

Kimley»Horn

FIGURE 3  
SW 19TH STREET

SHEET  
NO.  
2



RIVERLAND ROAD  
TRAFFIC CALMING IMPROVEMENTS

Kimley»Horn

FIGURE 3  
SW 19TH STREET

SHEET NO.  
2

# Riverland Rd Traffic Calming Project

Next Step

Coordination with Stakeholders

- Fire Rescue
- Police
- City Maintenance
- Waste Authority





# Comments, Questions

We value your input

THANK YOU

