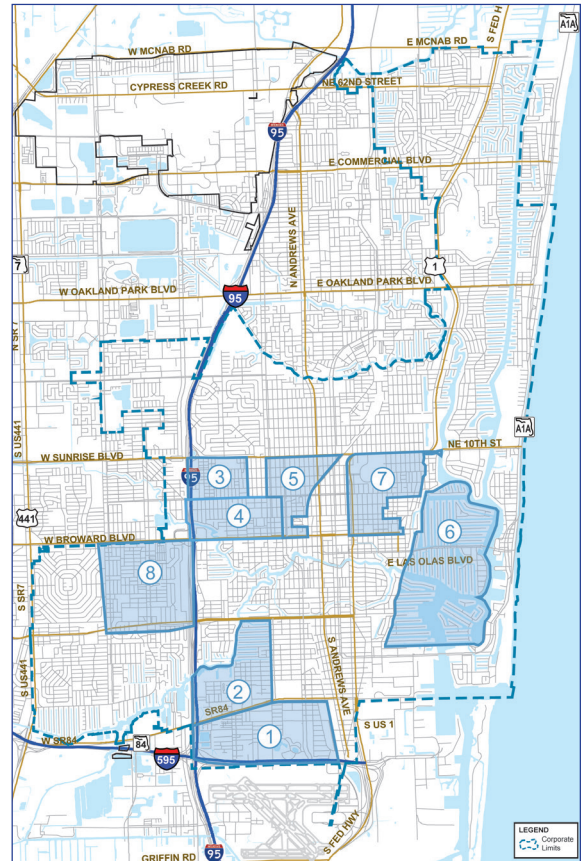
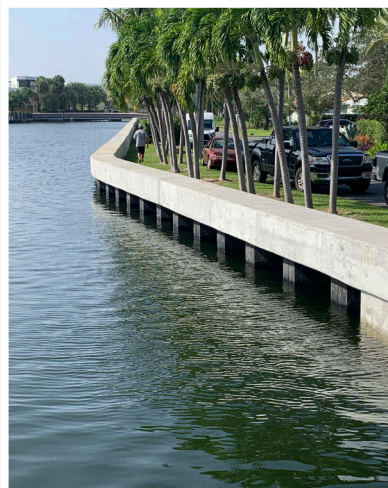


**Work on the Stormwater/Resilience Master Plan continues to progress throughout vulnerable neighborhoods in the City.** Updated project progress is provided below. Work continues on planning efforts associated with the Tranche 2 neighborhoods, including updates to the City’s existing stormwater model allowing simulation of current and future conditions to inform stormwater improvements. **Further details can be found on the next page.**

Neighborhood	Project Status
1a Edgewood *	Construction substantially complete
1b Osceola Creek Dredging (Edgewood) *	Maintenance dredging completed. Culvert cleaning and restoration work completion anticipated Summer 2024
2a River Oaks (Underground Utilities) *	Construction substantially complete
2b River Oaks (Pump Stations)	In Construction
3 Durrs *	In Construction
4 Dorsey-Riverbend	Notice to proceed issued on May 2024 Pre-construction activities in progress
5 Progresso Village	Design being updated; Bidding Fourth Quarter 2024
6 Southeast Isles	Design being updated; Bidding Third Quarter 2025
6a Southeast Isles Seawalls Replacement	Construction substantially complete.
7 Victoria Park	Design being updated; Bidding First Quarter 2025
8 Melrose Manors/ Riverland Civic	Estimated design completion Fall 2025



\* Construction ahead of schedule



### Seawall upgrades: a necessity, not an option.

Seawalls serve as a crucial component of the City’s defense against tidal waters to stay ahead of potential impacts from sea level rise and future “king tide” events. The City is taking a proactive stance by adjusting public seawalls to meet the regional standard 2050 deadline for a top-of-wall elevation of 5 feet.

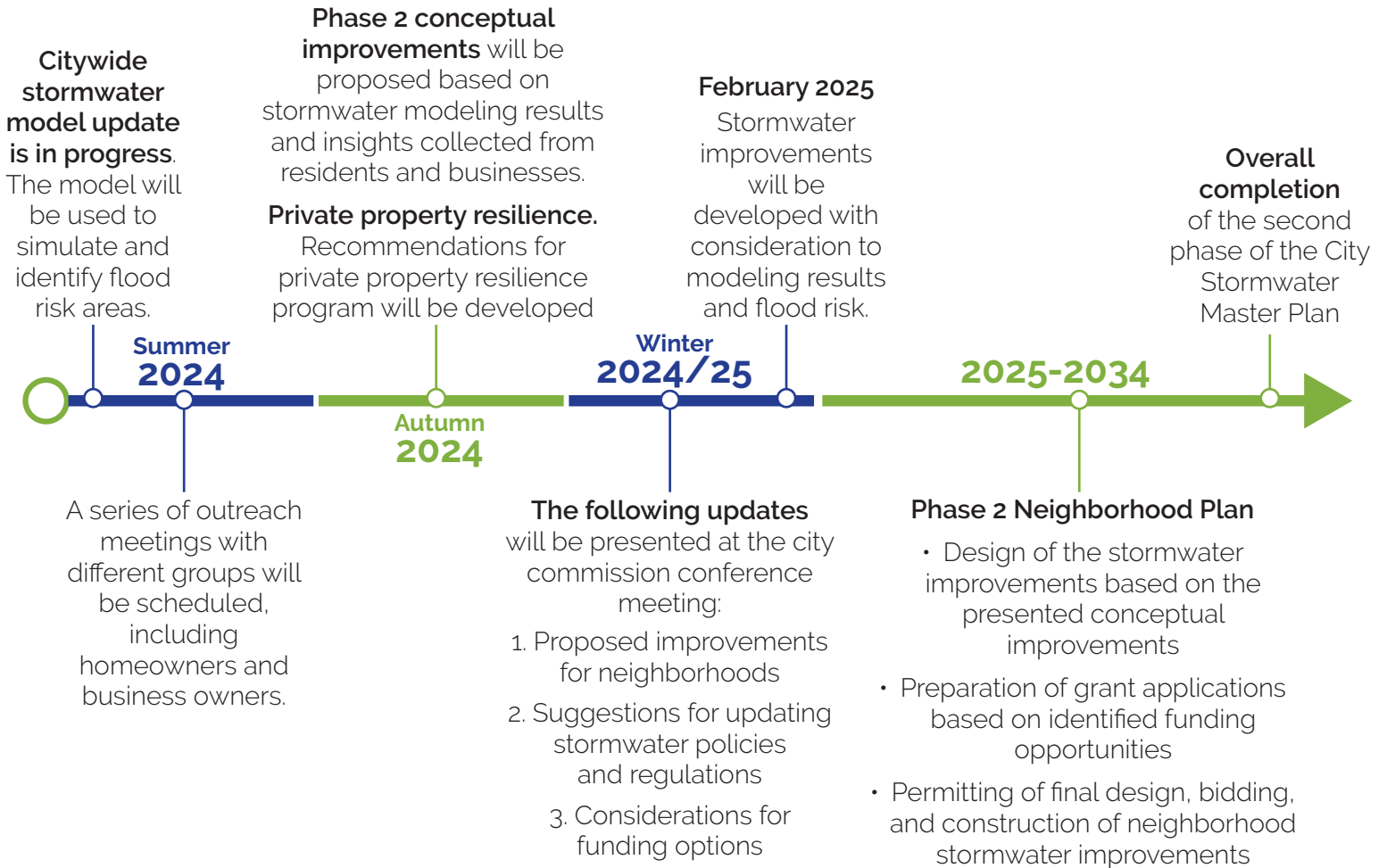


CITY OF FORT LAUDERDALE

# Progress Report

Fort Lauderdale Stormwater Program  
July 2024

## Tranche 2 Neighborhood Improvements Timeline



### June severe weather event led to citywide state-of-emergency.

The severe storm on June 11th highlighted the critical need to improve the stormwater management system. The City closely monitored the event to ensure real-time data are incorporated into current modeling efforts to mitigate future flooding events. We are committed to investing in long-term solutions that enhance the safety and well-being of all residents and properties.