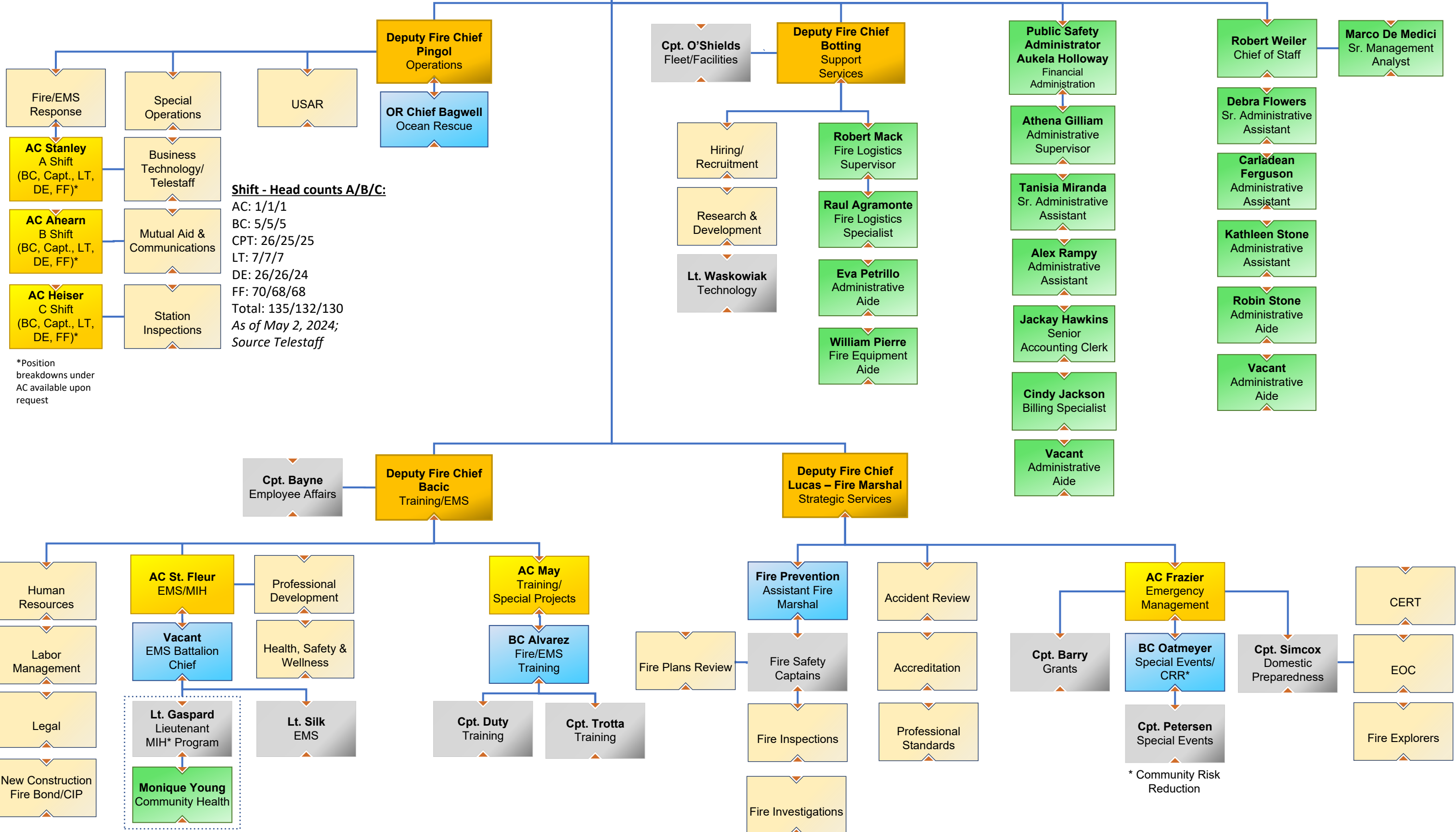
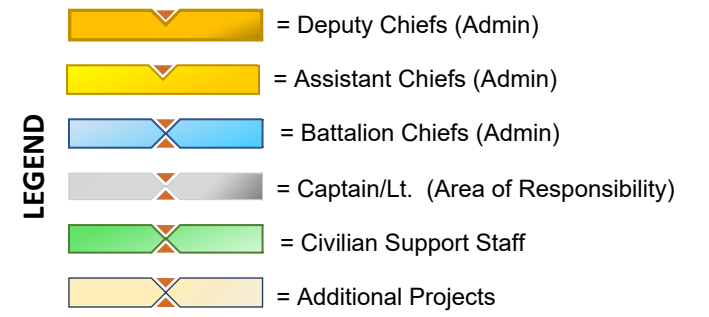




Fort Lauderdale Fire Rescue

2024 Administrative Organizational Chart 10.2e



Shift - Head counts A/B/C:
 AC: 1/1/1
 BC: 5/5/5
 CPT: 26/25/25
 LT: 7/7/7
 DE: 26/26/24
 FF: 70/68/68
 Total: 135/132/130
 As of May 2, 2024;
 Source Telestaff

*Position breakdowns under AC available upon request

*Mobile Integrated Healthcare (MIH)

* Community Risk Reduction