

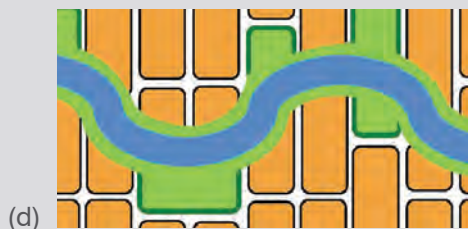
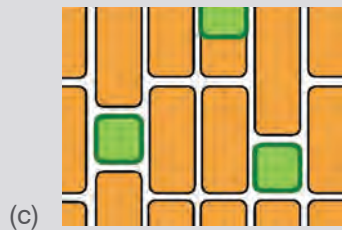
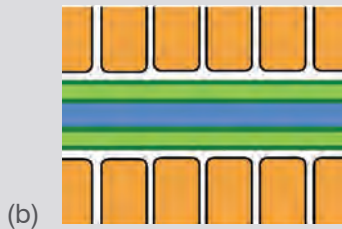
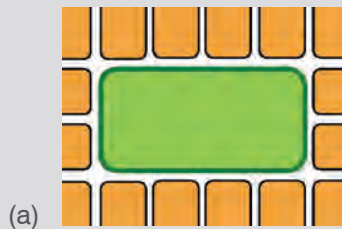
CHAPTER 3 ACTIVATION STRATEGY

ARTS AND ENTERTAINMENT IN THE RIVERWALK DISTRICT REPORT



URBAN PARK TYPOLOGIES

- a) central park: city/park separation
- b) central river-park: city/park separation
- c) dispersed parks: isolated/disconnected
- d) 'beads on a string' urban waterfront: variety and interconnection



APPROACH

GOALS

1. To activate Fort Lauderdale's downtown Riverwalk at all times of the day and seasons of the year.
2. To stimulate the economic revitalization of the Riverwalk cultural district.
3. To provide a friendly setting where people can share their talents, express their ideas, and enjoy being together.
4. To attract new visitors.
5. To establish a dynamic new image for the Riverwalk.

GENERAL APPROACH

Fort Lauderdale's New River and its public spaces offer exceptional opportunities for a unique and vibrant public realm. Unlike the more typical urban park configurations (upper three diagrams at left), Fort Lauderdale's condition offers a variety of public spaces and characteristics throughout Downtown, all connected and unified by the New River. Its meandering configuration offers changing views and vistas, and provides a visually compelling counterpoint to the gridded blocks surrounding it.

Given the variety and types of spaces that this 'beads-on-a-string' model of urban space provides, there is an opportunity to emphasize the distinct characters of places along the river. Instead of overlaying a "unifying approach" to materials or identity, the Riverwalk District can offer more choices to more people by reinforcing distinct activation centers that are consistent with the Character Area visions of the previous New River Master Plan.

One advantage offered by this approach is the ability to focus short-term energy and implementation efforts around the few key areas along the river that currently have the most momentum and synergy among current and proposed initiatives. These areas of focus, four in total, are referred to as Activation Centers and are illustrated on the facing page. These four Activation Centers form the framework for organizing the wide range of programming concepts and physical improvement recommendations described in this chapter.

APPROACH TO PROGRAMMING AND EVENTS

The 'menu' of potential events and activities shown on the following pages have been developed with an approach that will lead to Riverwalk activation that is:

PARTICIPATORY

Engaging and active; attracting programming partners, sponsors, and volunteers from the non-profit and for-profit sectors.

VARIED

Large and small; permanent and temporary; daily and seasonal; sports, recreation and culture; annual and one time; gated and free.

INCLUSIVE

Open to all; appealing to diverse audiences.

SUSTAINABLE

Designed to be economically viable with the capability grow in the future.

THEMATIC

Programming concepts reinforcing the unique identity of each destination along the Riverwalk.

PROMOTIONAL

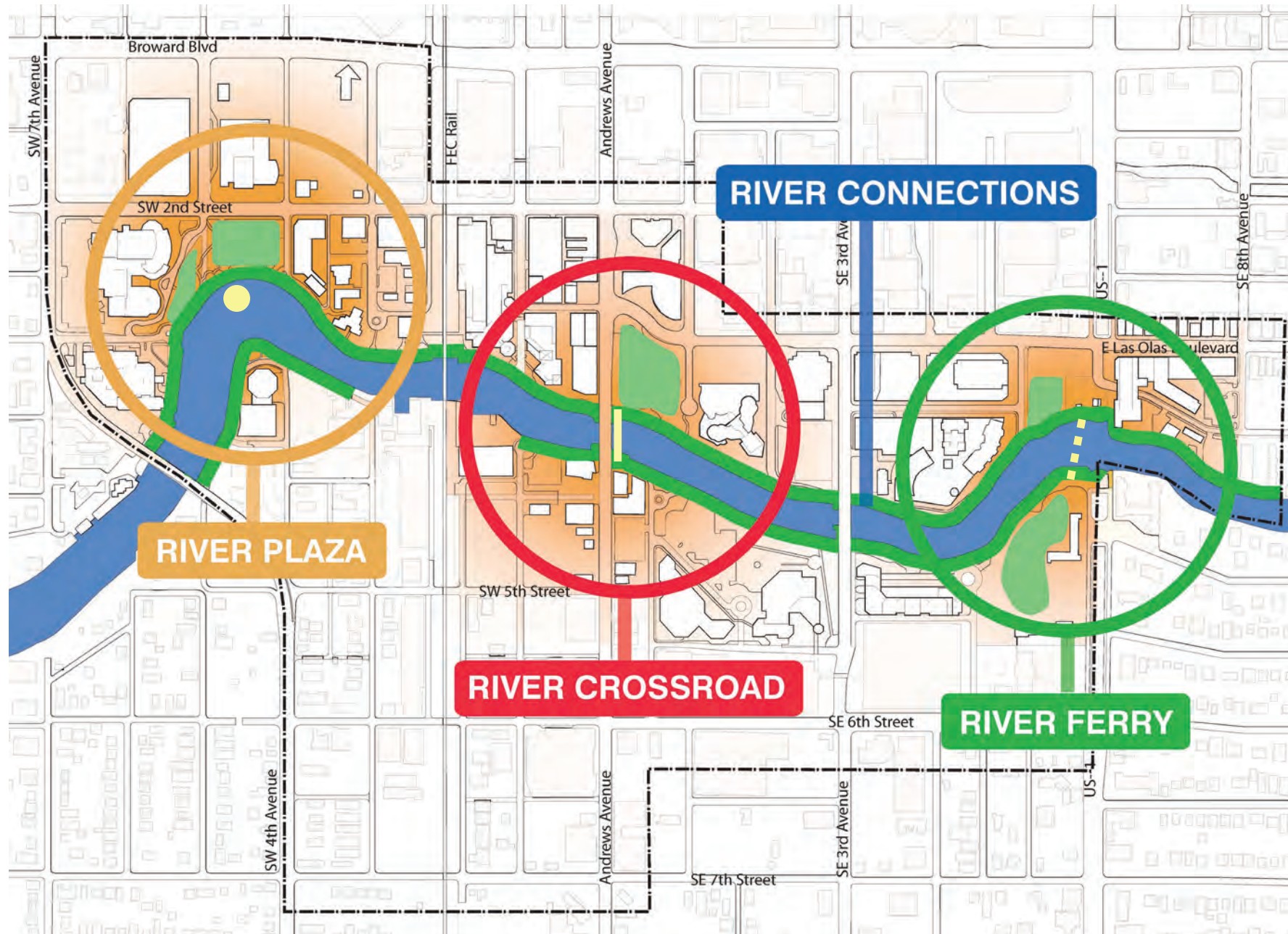
River-wide events, activities and installations building a positive image for the Riverwalk as a whole; an interactive Website communicating that image to the general public.

HIGH QUALITY

All elements are well-produced whether by professionals or volunteers.

ACTIVATION CENTERS

3 ACTIVATION STRATEGY



PROPOSED

ACTIVATION CENTERS AND MAJOR DESTINATIONS

RIVER FERRY: The East Anchor

- Smoker Park
- Stranahan House
- Future Icon Development Site
- Laura Ward Plaza
- Las Olas

RIVER CROSSROAD: Heart of the Riverwalk District

- Court House
- Andrews Bridge Crossing
- Huizenga Plaza
- Las Olas Riverfront Development
- Museum of Art
- Florida Atlantic University
- Broward College

RIVER PLAZA: The West Anchor

- Himmarshee Park
- Esplanade Park
- Broward Performing Arts Center
- The New River Basin
- Museum of Discovery and Science

RIVER CONNECTIONS: Riverwalk's 'Main Street'

- The New River

RIVER FERRY | THE EAST ANCHOR

ACTIVATION CENTER INTENT

The “River Ferry” Activation Center will anchor the eastern end of the Riverwalk District by providing a meaningful connection between the north and south sides of the river. At the location of the historic Stranahan ferry, a new public ferry connection will shuttle people back and forth on a regular, frequent schedule and fill in a critical missing link in the creation of a Riverwalk “loop” that allows people to easily enjoy the parks and open spaces along both sides of the river. Rio Vista residents will be a quick 5-minute walk from Las Olas Boulevard; Smoker Park becomes an easy lunchtime destination for Downtown workers north of the river; and the ferry ride itself will become an event that links the city’s maritime traditions with the evolving desire for more mobility options and pedestrian friendly experiences.

The north landing - Stranahan Landing - envisions a place that combines Laura Ward Plaza, the Stranahan House, and the site of the future “Icon” building development into a coherent inter-related series of open spaces and event venues. For the site of the future “Icon” development, temporary physical improvements are proposed (to last until construction of the proposed building and open spaces) that allow for event venues and for another critical link: the pedestrian link connecting the Riverwalk to the Las Olas Boulevard retail.

The south landing - at Smoker Park - envisions enhancements to the existing natural beauty of Smoker Park that make it into an even more attractive destination. The future hotel building site can be opened up to accommodate temporary event uses; minor landscape improvements, such as clearing out sightline-blocking low shrubbery and adding park lighting, can add to the beauty and safety of the area.



PROPOSED

SMOKER PARK | THE FAMILY PARK



SMOKER PARK: THE FAMILY PARK

Like a neighborhood park, Smoker provides a dog run, a children's play area, an adult meditation area, picnic tables and attractive night time lighting. But Smoker Park is not just for the neighborhood. It hosts some unique celebrations and takes part in River wide events, anchoring the East End of the Riverwalk.

SMOKER PARK | Spooky Halloween Festival

SMOKER'S SPOOKY HALLOWEEN FESTIVAL

Type of Event: Holiday

Hours: Kids party 10:00 -4:00 PM;
Adult party 7:00 -10:00 PM

Concept

Smoker Park is a gathering place with unique characteristics such as the amazing tree at the east end and the open space with shade, which make it the perfect setting for the Halloween Event. A single theme is chosen and décor and activities are developed to support that theme. This is an all day event and has the potential to grow into a larger festival connecting to other parts of the Riverwalk.

Theme: Mermaids, Pirates, and River Creatures- Oh MY!

Elements

- Light projections of haunted faces in the trees.
- Strobe lights hung throughout the space in the trees that are going off at all different times.
- Large pumpkin displays with Pirate and Dragon faces.
- Oversized skeleton sculptures scattered throughout wearing pirate and mermaid accessories.
- Picnic tables with cobwebs and bench seating that looks like planks.
- Dry ice and fake fire effects to fill the atmosphere.
- Tombstones with funny pirate names

and stories of how they died.

- Performance stage designed to be a haunted boat with black torn sails and boat accents. River and sea creatures are used as props along the performance area.
- A haunted boat arrives carrying all the performers who jump off the boat making a loud ruckus and run through Smoker Park being scary and gathering up the kids to join them at the haunted boat performance stage.

Activities - Kids

- Costume making workshop in the morning: Pirates; sea creatures; dragons; mermaids.
- Kids costume parade (with musical instruments perhaps) in the afternoon. Parade goes along the Riverwalk to the River Crossing.
- Performance stage: Story telling; Original shows such as Captain Hook Pirate Show, Pumpkin Puppet Show, Ghost stories of the Sea; The Haunted Mermaid.
- Craft workshop- mask decorating, pumpkin carving, ghost making.
- Musical hats (like musical chairs but you pass the hat or mask).
- Skull bowling.
- Spooky Parrot (a live looking parrot that has a video camera inside.) An operator off-site, speaks to the kids and makes spooky sounds as well as funny comments for adults as they pass by.



Bronx Zoo Halloween Festival



Artist Tony Oursler in Madison Square Park



Bronx Zoo Halloween Festival of Bats



Pup Parade

Activities- Adults

- Skulls bowling - Day
- Fortune Tellers - Night
- "Pirates Gold" – Blackjack tables - Night
- Performance Stage: A live band is dressed like pirates.
- Add beverage service – special pirates brew and themed glassware.

Vendors

- Food vendors provide scary treats and easy to eat foods for the kids and hearty pirate foods for the adult party.
- Themed scary drinks (add dry ice) for kids and adults.

SMOKER PARK | Art in the Park

ART IN SMOKER PARK

The unusual vegetation of Smoker Park is imaginatively enhanced by art works lent by galleries, museums, artists, and collectors, with a special emphasis on pieces that employ lighting effects and projection.

Madison Square Park in New York literally pulses to the rhythms of its visitors' hearts. Viewers are invited to take hold of heart rate monitor and watch as the Park's lights match their own heartbeat.



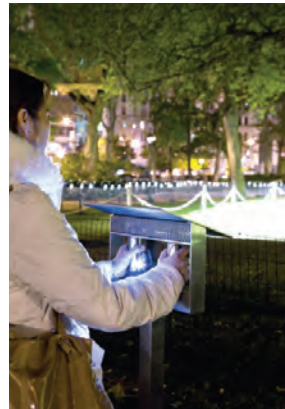
Artist Roxy Paine in Madison Square Park



Artist Anish Kapoor in Rockefeller Center



Artist Ai Weiwei at Art Basel in Miami Beach



Artist Rafael Lozano Hemmer in Madison Square Park



Artist Rafael Lozano Hemmer in Madison Square Park

SMOKER PARK | Other Events

RIVER-WIDE FESTIVALS

Once the river crossing capabilities have been established, Smoker Park participates fully in events such as Jazz Brunch.



Jazz Brunch

NEIGHBORHOOD NIGHT OUT

A long table is set up for a communal meal with many courses prepared by local residents. Local musicians play. Games for kids and adults are refereed by local teens.



MetroTech, Brooklyn

PICNICS UNDER THE TREES

Picnic tables and moveable seating encourage local families, workers from nearby businesses, and Court House employees to lunch al fresco enjoying the canopy of trees.



Company Picnic



Bronx Zoo, Egg Hunt



Palio di Siena, Italy



Union Square

STRANAHAN LANDING | The Link to Las Olas



STRANAHAN LANDING: THE LINK TO LAS OLAS

(The Future “Icon” Development Site, Stranahan House & Laura Ward Plaza)

This complex of spaces links the Riverwalk to the vibrant retail and restaurant stretch of Las Olas that includes the Riverside Hotel. Laura Ward and the “Icon” Site in combination are a critical entry point to activities along both sides of the Riverwalk. Docking facilities at Laura Ward Plaza are essential for providing river crossing at this important gateway.

We recommend events and installations throughout the “Icon” Site and Laura Ward Plaza that will relate to the fashion boutiques and art galleries along Las Olas.

STRANAHAN LANDING | Fashion's Night Out

FASHION'S NIGHT OUT

Type of Event: Retail

Hours: Thursday: 7:00 PM – 11:00 PM

Store shopping hours 8:00 – 10:00

Concept

Fashion Night Out is a celebration of fashion and shopping. The event begins with a designer fashion show in the Icon Site, then moves to the shopping events on Las Olas Boulevard, and circles back to Laura Ward Plaza for the fashion lounge complete with seating and informal modeling using clothes from the local stores. The DJ continues to play while images of vintage fashion shows, world fashions, or fashion inspired movies play as a backdrop. The VIP's are also treated to a special reception where tickets for meet and greets may be purchased.

Elements

- Main stage and seating area for fashion show.
- Food & beverage vendors in Laura Ward Plaza.
- Special T-shirts are designed by a local designer & sold to raise money for a selected charity or to provide funding for the event.
- Bright colored banners designed by local fashion designers are placed outside each participating store.

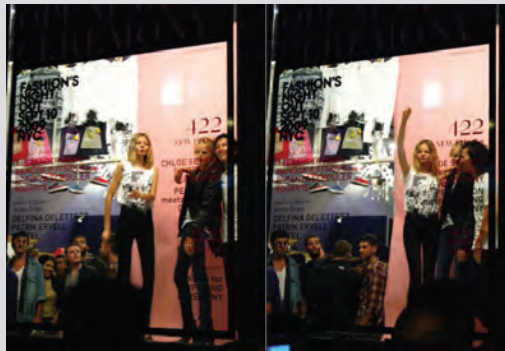
- Special "Hollywood" lighting such as Klieg lights are placed at the fashion show entrance.
- Red carpets are used as welcoming markers at the entrance of each participating store.
- Step & Repeat for everyone located at the entrance to the fashion lounge or fashion show. Know what it is like to be on the red carpet!

Activities

- Fashion Show representing the stores on Las Olas.
- Free beverages and sweets are served in stores.
- Each participating vendor will provide a special activity such as guest Designer; guest celebrity model, DJ, fashion stylist, personal photographer (pose for your own fashion shot).
- VIP reception area for visiting designers held at either the Icon site or Riverside Hotel.



New York



Outdoor Fashion Run



Belgium



New York

STRANAHAN LANDING | Art and Special Events

LENT ART

The “LentSpace” in New York City is a temporary park donated by a real estate developer that hosts art works lent by galleries, museums, artists, and collectors. The temporary lawn of the Icon site would be an ideal location for these kinds of installations.



The Lent Space



Battery Park

SPECIAL EVENT VENUE

The Icon site has temporary facilities that could be used as a production area for events such as fashion shows, and also as a rental venue for small special events.



Biz Bash



Biz Bash

STRANAHAN LANDING | Other Activities

BIKE RENTALS

A rental and repair shop or a potential bike share station at the Laura Ward Plaza or the Icon site would be convenient for visitors who would like to explore the Riverwalk by bike.



Hudson River Park Bike Rental



Velo Libre

REST AND REFRESHMENT

Cafes with minimal infrastructure serving light refreshments and drinks are set up along the river's edge providing a rest stop for visitors embarking on a trip along the Riverwalk or completing one.



79th Street Boat Basin



Wagner Park

LAURA WARD PLAZA & SMOKER PARK

Ferry Connection

CONNECTING STRANAHAN TO SMOKER

A frequent low-cost, or free, ferry service between Smoker Park and Stranahan Landing (Laura Ward Plaza, Stranahan House, and future “Icon” building development site) can create one of the much-needed north-south Downtown connections, opening up the less-used south side of the Riverwalk, and creating the potential for a Riverwalk circulation loop. Previously disconnected neighborhoods and areas of the city would suddenly be re-connected, mobility options Downtown would be increased, and a practical transportation element would serve simultaneously as a river-based event unique to Fort Lauderdale.



Ferry Stop Queensland, Australia



Ferry Boats Vancouver

PHYSICAL IMPROVEMENT | Smoker Park

CHALLENGES & OPPORTUNITIES

- Park areas feel disconnected due to wide swaths of paving and dense eye-level landscaping that blocks views.
- Southern portion of park is removed from any public rights-of-way or active pedestrian paths, creating safety perception issues; there is an opportunity for connections to the south and east to alleviate the “dead-end” nature of the park.
- Future hotel site is currently fenced in, creating an unattractive western edge; this area could be opened up to accommodate temporary uses.
- Non-native species, such as mango trees, compete with the larger shade trees, blocking views, limiting use of the open spaces, and creating seasonal maintenance issues.
- There is a lack of continuity and coordinated open space strategy between Smoker Park and the future “tunnel top park” to the east and the stretch of Riverwalk in front of New River Village to the west. There is an opportunity to create a s
- A lack of shade trees, and abundance of paved surfaces in the stretch of Riverwalk fronting New River Village (to the west of Smoker park) adversely affects pedestrian comfort.
- The view corridor looking north to the river from SE 5th Avenue is interrupted by eye-level fountains lining the roundabout that block views to the river and disrupt pedestrian movements along the Riverwalk in the east-west direction.



EXISTING

PHYSICAL IMPROVEMENT | Smoker Park

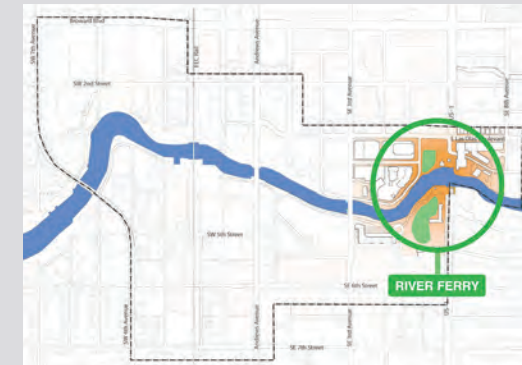
3 Physical Improvement RIVER FERRY ACTIVATION STRATEGY



SMOKER PARK IMPROVEMENTS

1. Replace parallel parking spaces with shade trees
2. Redesign existing fountain to open views to river
3. Existing Riverwalk
4. Future Hotel - temporary site is sodded and open for potential movie screenings
5. Path to connect to street
6. Upright signature oak trees and remove low hanging mango trees
7. Absorb parking spaces into adjacent parking deck and expand park to sidewalk
8. Crushed gravel paths
9. Ferry Terminal

PROPOSED



PHYSICAL IMPROVEMENT | Stranahan Landing

CHALLENGES & OPPORTUNITIES

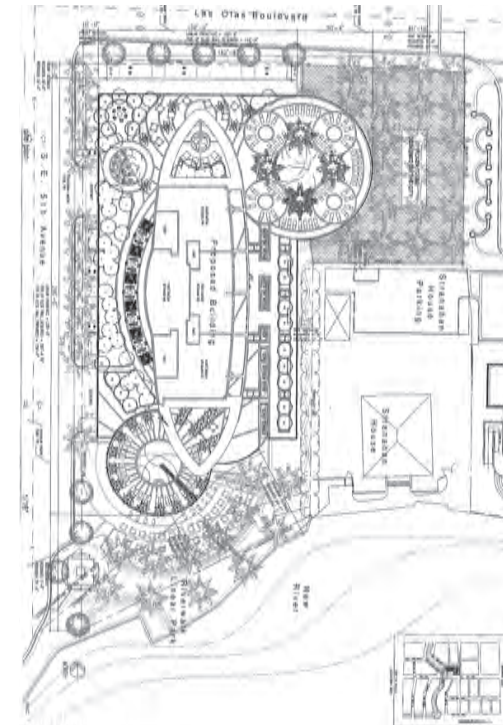
- Two of Fort Lauderdale’s most successful public spaces – Las Olas Boulevard retail and the Riverwalk – are disconnected.
- The site of the approved “Icon” development, just west of the Stranahan House, will likely remain vacant for a number of years before construction begins.
- Currently, there is no public waterfront access in front of the Stranahan House.
- Laura Ward Plaza is divided by the over-scaled SE 4th Street, the open spaces around the Stranahan House are privately controlled, and the vacant “Icon” development site, together create a patchwork of disconnected open spaces at one of the most crucial links in the Riverwalk District. There is an opportunity to open up the “Icon” site for temporary uses, consider a solution for public waterfront access in front of the Stranahan House, and make minimal landscaping improvements to help unify the character of these various spaces.
- Because of the current “dead-end” nature of Laura Ward Plaza, activation of the space with the help of kiosks and/or ground floor retail is difficult; a ferry connection to the south side of the river, and a pedestrian connection connecting west to the Riverwalk would provide a critical mass of people passing through and using the space.



EXISTING



PROPOSED TEMPORARY USE CONCEPT



PROPOSED LONG-TERM "ICON" DEVELOPMENT SITE
APPROVED BUILDING AND PLAZA

STRANAHAN LANDING IMPROVEMENTS

1. Green space*
2. Pop-Up Cafe/Retail*
3. Seating*
4. Future "Icon Development" - Temporary Use lot open for events and parking*
5. Pedestrian Path to connect to Riverwalk*
6. Stranahan House - with open gates
7. Laura Ward Plaza dock
8. Extended Riverwalk to connect to Stranahan
9. Street vendors
10. Utility boxes screened with landscape
11. Ferry Terminal

* Indicates temporary use on "Icon" Development Site, to be replaced eventually by approved development



RIVER FERRY | BEFORE



EXISTING

RIVER FERRY | AFTER



PROPOSED TEMPORARY USE CONCEPT

RIVER CROSSROAD | HEART OF THE DISTRICT

ACTIVATION CENTER INTENT

The “River Crossroad” area is literally the “crossroads” of Downtown Fort Lauderdale, where: Andrews Avenue (Fort Lauderdale original main street) crosses both the Los Olas/2nd Street corridor and the New River; clustered around these crossings is a series of prominent institutions and open spaces; it is one of the few places where retail and outdoor dining actively engage the river’s edge; and geographically, the area is located at the midpoint of the Riverwalk, and in the heart of Downtown.

The vision for this area is to build upon the intensity and mix of uses and leverage the movement of people through this central location to create an active destination with activity 24 hours a day, 7 days a week. The Andrews Avenue bridge is the bridge that is easiest and most convenient to cross (compared to others Downtown), and should be greatly improved for increased safety, accessibility and ease of use. The destinations on either side of the bridge should be activated with programs and events to better utilize the open spaces and extraordinary riverfront locations. For example, a portion of the Courthouse parking lot may be utilized for a green-market, drawing people who would not typically visit this south-of-the-river location. In addition, physical improvements to places like Huizenga Plaza can help the space work better for the types of events that are typically held there, such as festival events that are less performance-based and more free-flowing in configuration. Other opportunities exist to capture overlooked, underutilized spaces, such as those under the shade of the Andrews Avenue Bridge structure, and transform them from “holes” in pedestrian continuity into active retail/kiosk locations that bring added life and an improved perception of safety.



PROPOSED

COURTHOUSE SQUARE | THE MARKET SQUARE



COURTHOUSE SQUARE: THE MARKET SQUARE

The Court House Square (parking lot) at the South side of the Andrews Avenue Bridge becomes known as the location for a variety of markets in all seasons of the year. As the Andrews Bridge River Crossing area becomes developed, visitors to the market can combine the shopping experience with riverside dining and entertainment.



COURTHOUSE SQUARE | Food Market

RIVERWALK FOOD MARKET

Type of Event: The Riverwalk Trust Urban Market currently happens every Saturday
 Hours: 8 AM – 1 PM

Concept

This extraordinary food market presents the best in the makings of great home-cooked meals, including produce, dairy, meat, fish, bread, and preserved foods. Residents and visitors can stock up on the wonderful products. Workers at the Court House and local businesses and visitors can purchase excellent picnic lunches to eat by the River.

Elements

- Farm Fresh Produce and Wild-Gathered Foods such as mushrooms
- Fish and shell fish
- Dairy and artisanal cheeses
- Wine and cider
- Meats
- Prepared foods such as ketchup, pickles, and jams
- Baked goods

Activities

Every month there is a different focus with activities associated with a theme such as demonstrations and talks.



For example:

- The butchering tradition
- Pickles from around the world
- Bread baking
- Fish and the environment
- Christmas cookies



New Amsterdam Market



New Amsterdam Market



New Amsterdam Market

New Amsterdam Market

COURTHOUSE SQUARE

Other Outdoor Markets

ANTIQUUE MARKETS

High quality second-hand furniture, jewelry, and clothing as well as a selection of contemporary crafts are for sale at the Antique Market on a monthly or weekly basis.



77th Street Market



Chelsea Antique Market

HOLIDAY MARKETS

The Market Square is transformed for the holiday season by colorful tents decorated with festive lighting. Gifts and holiday foods of all sorts are sold during the day and evening. Live street musicians perform on a regular basis.



Union Square Holiday Market



Bryant Park Holiday Market



Courthouse Parking Area Before



Proposed Courthouse Market After

ANDREWS AVENUE BRIDGE | THE ACTIVITY DESTINATION

ANDREWS BRIDGE RIVER CROSSING: ACTIVITY DESTINATION

Restaurants, cafes, and river events activate both sides of the River and both sides of the bridge, making this section of the Riverwalk one of the densest destinations for visitors from downtown and the region.



ANDREWS BRIDGE RIVER CROSSING

Lighting

RIVERWALK BRIDGES

The bridges that punctuate the Riverwalk are transformed into beacons of light, illuminating the entire area, drawing visitors to the riverbank from one side of the river to the other.

This light is in the form of LED installations, projections and fluorescents that glow when 'written on' by light wands. The risers on the bridge's stairs are fitted with sensors that light up when visitors' feet touch them.

Lighting designs change on a regular basis with design competitions or commissions that draw from both local and internationally recognized artists.

The dark underside of the bridges is an inviting opportunity for light projections that can occur during the day and night. The rich glow illuminates the water and makes the covered walkways safer and more appealing.

PUBLIC LIGHTING PRECEDENTS

Lighting of public structures both in a festival setting and also on a permanent basis is becoming increasingly popular around the world, especially given current advances in lighting technology.



Ben Franklin Bridge Miami



Berlin



Ben Franklin Bridge Philadelphia



Columbus Circle



Jenny Holzer



Lyon, France



Lyon, France

ANDREWS BRIDGE RIVER CROSSING | Other Events

SHUTTLE BOATS

Another potential location for small, uniquely designed boats shuttle passengers from Riverfront to the Downtowner on a regular basis.



Vancouver Water Taxis



Vancouver Water Taxis

SEMI-ENCLOSED CAFE

A fast food restaurant similar in concept to the highly successful Shake Shack in Madison Square Park, NYC, is installed under the North section of the Andrews Bridge.



Shake Shack in Madison Park



79th Street Boat Basin

ANDREWS BRIDGE RIVER CROSSING

Other Events

MARDI GRAS PARTY

Both sides of the Riverwalk are enlivened with music, food, dining and dancing for the annual Mardi Gras celebration.



Mardi Gras Parade



Mardi Gras Parade

WATERFRONT CAFES

Cafes with minimal infrastructure are set up along both sides of the river to create a critical mass of activity and refreshment choices for people crossing the river in both directions.



Hudson River Park



Wagner Park



Andrews Bridge Before



Proposed Andrews Bridge After
(from New River Master Plan 2008)

HUIZENGA PLAZA | THE FESTIVAL PARK

HUIZENGA PLAZA: FESTIVAL PARK

The largest open space along the Riverwalk has the most varied program of activities. The park is redesigned to accommodate a multiplicity of festivals, performances, sports related events, and recreational activities.

DDA PARK

The DDA is contemplating improvements to Huizenga Plaza, primarily to correct the grade of the lawn so that it declines as it approaches the existing stage, allowing the park to be better utilized for major performances.



TOURNAMENT VIEWING: MASTERS GOLF TOURNAMENT

Type of Event: Sporting
 Hours: Multiple days and
 broadcast hours

Concept

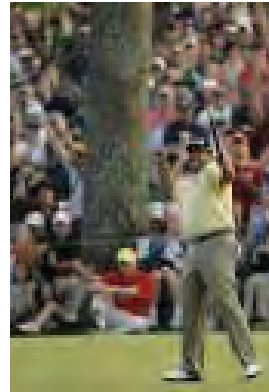
If you cannot be there in person then the best place to watch the Masters Golf tournament is Huizenga Park. Watch the live broadcast, free of charge, on a video board screen complete with stadium seating and interactive golf programs. Guest will also enjoy tasty meals from booths set up in the park by the local restaurants. An additional activity to tie in is a family movie night on one of the off nights.

Elements

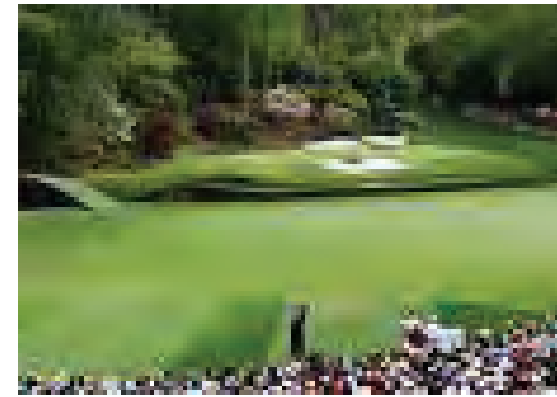
- Video board screen
- Seating and grandstands
- Food and Beverage vendors
- Golf Vendors
- 19th Hole Café with bar and food. Café tables, additional plasma TV's, Wii golf. Plasmas show the broadcast as well as playing past great moments in Master's history.

Activities

- Putting green
- Golf lessons for kids
- Pros show off trick shots



Lessons



Masters Golf Tournament



US Open Tennis,
 Madison Square Park



US Open Tennis,
 Rockefeller Center

- Golf Raffle (fundraising- could be set of clubs, tickets to next years Masters, pro lessons, etc).
- Information kiosks to find partners, lessons, and other golf networking opportunities.
- Wii golf competition

HUIZENGA PLAZA

Other Events

FESTIVALS

Multi-stage gatherings such as a Barbeque and Blues Festival and a Cajun Seafood Festival are staged using the whole park.



Pickle Festival

MONDAY MOVIE NIGHTS

Outdoor projections of popular films occur on a weekly basis for one month during the year. Picnicking is encouraged.



Rose Wharf, Boston

ART EVENTS

The Museum of Art in coordination with FAU and Broward College promotes its exhibitions and educational projects by staging outdoor events and installations in Huizenga Plaza such as "The Big Draw," a participatory art event, book signings, architectural installations, artist talks and demonstrations.



The Big Draw



Memphis Barbeque Cooking Contest



Battery Park



PS 1

HUIZENGA PLAZA

Other Events

CONCERTS

A regular series of popular music concerts is presented on the existing stage, which has been altered to make a more efficient backstage facility.



Bryant Park

FIELD DAY

Traditional field day games such as kick ball, obstacle courses, three legged races, ping pong, and frisbee create energy and fun as well as newer games such as Twister.



Battery Park

SKATING RINK

A temporary rink is installed for in-line and rollerskating to music.



Central Park Weekend Rink



River to River Festival



Field Day



Children's Roller Rink

RIVERFRONT: ARTS AND ENTERTAINMENT

Programming reinforces the image of Riverfront as a retail entertainment district by revitalizing it with outdoor events, pop up retail, and artist studios. Filling the existing unused spaces with life at all hours of the day and evening draws visitors from the surrounding streets toward the water.



DANCING BY THE RIVER

Type of Event: Outdoor Ballroom

Hours: 6:00 PM – 9:00 PM
Thursday, Friday, Saturday
for one month

Concept

Everyone is invited to enjoy social dancing to the sound of live bands playing popular dance music from around the world. A temporary outdoor “ballroom” is installed at the Riverfront plaza for the period of one month complete with a dance floor and moving lights. From Thursday to Sunday the floor swings with different dances every night. Participation is encouraged, but watching is also welcomed. An outdoor café is set up near the dance floor serving drinks and light food.

“Dancing by the River” is publicized throughout the neighborhoods of Fort Lauderdale in order to reach diverse multi-cultural attendees. Experience in New York City and other urban centers has shown this type of event to be highly successful. “Midsummer Night Swing,” which began in Lincoln Center as a free event, now charges a fee of \$15 per person to get on the dance floor and offers discounted six-night and season tickets as well. Couples are free to dance without buying a ticket, not on the floor, but on the plaza around it.



Midsummer Night Swing



Midsummer Night Swing



Las Olas Riverfront Before

Some older people bring chairs, having fun being part of the dance evening in a way that is comfortable for them.

Elements

- Salsa
- Disco
- Tango
- Big Band Swing
- Funk
- Rockabilly
- Mambo

Activities

- For dancers of all levels, every evening kicks off with a dance lesson from 6:00 to 7:00, when the live bands begin and free dancing continues until 9:00 PM.
- There is a special Kids Day when, from 3:30 to 5:00 kids have dance lessons for a \$5 ticket and kids under five are free.



Midsummer Night Swing



Proposed Las Olas Riverfront After

LAS OLAS RIVERFRONT | Other Events

HAPPENINGS

Participatory multi-media events are produced by local arts organizations in the dramatic but currently unused spaces of Riverfront. They include creative mixtures of music, performance art, dance, theater, and visual arts installations



Swoon Installation

ART CLASSES

Museum of Art students, both young and adult, take classes on a daily basis in temporary studio spaces set up at Riverfront. Classes are also moved out of doors on occasion, so that students can paint and draw the Riverwalk.



Hudson River Park

ART STUDIOS

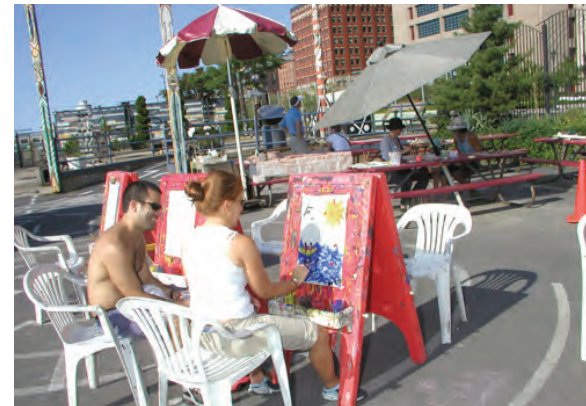
Fort Lauderdale artists are provided with workspace at discounted rents. Since artists work at all hours of the day and night they help to activate the space and make it feel more secure. Open studio events are held on a monthly basis, allowing visitors to view and perhaps purchase the work while enjoying the sociability and a glass of wine.



Brooklyn Navy Yard



Strange Fruit Performance



Hudson River Park



Torpedo Factory, Alexandria

PHYSICAL IMPROVEMENTS

Huizenga Plaza



EXISTING



PROPOSED

CHALLENGES & OPPORTUNITIES

- The strong stage-viewing axial design creates a formal space that disrupts natural pedestrian patterns and views to the river from Las Olas Boulevard.
- The western edge of the park is unattractive and unsafe with a backdrop of chain-link fencing and parking under the bridge
- The Museum of Art feels disconnected

HUIZENGA PLAZA IMPROVEMENTS

1. Expanded crosswalk to Museum of Art
2. Outdoor Cafe seating
3. Informal paths and more shade trees to encourage pedestrian activity and a variety of festival uses
4. Cafe under the bridge with indoor and outdoor seating, restrooms.
5. Playground
6. Existing Pavilion
7. Shaded Riverwalk



RIVER CROSSROAD | BEFORE



RIVER CROSSROAD | AFTER



ACTIVATION CENTER INTENT

The “River Plaza” area offers a unique opportunity to build upon the variety of open spaces created by the winding river and its unique relationships to the surrounding blocks. Where “River Ferry” is about connecting two distinct places, and “River Crossroad” is about overlapping connections and the intensity created from passing through various “centers”, “River Plaza” is ultimately about the enclosure of a defined outdoor space. It becomes an outdoor room facing the dramatic river basin - a park as an urban theater with the river and city as the backdrop. Active edges along the three urban edges create new places and experiences that connect major institutions (Broward Center for Performing Arts and Museum of Discovery and Science) directly with the park, adding improved safety and more opportunities for programs and events to fill the open spaces both day and night.

“River Plaza” can become the true heart of an expanded arts and cultural district, housing a diverse array of cultural events, possibly adding to the spectacle of waterfront performance through the use of a floating stage. In the end, it should be commonplace for visitors to attend a performance at BCPA after meeting for a pre-concert event in Esplanade Park, and followed by a leisurely stroll to dinner or post-show event in the Himmarshee area, or even as far as Las Olas Boulevard - all without depending on private automobile transport.

RIVER PLAZA | THE WEST ANCHOR



PROPOSED

RIVER PLAZA | HIMMARSHEE PARK

3 RIVER PLAZA ACTIVATION STRATEGY



HIMMARSHEE PARK: HISTORIC AND ROMANTIC

The charm of old Fort Lauderdale and the garden-like setting of Himmarshee have made it a popular setting for weddings and special events. The general public would enjoy events that take advantage of its historic and romantic character.



HIMMARSHEE PARK | Other Events

LANTERN FESTIVAL

Type of event: Fundraiser Gala Dinner

Hours: 7:00 – 11:00

Concept

Beautiful white lanterns representing the lantern festivals in many parts of the world such as China, Haiti, Taiwan, Korea, and Singapore are displayed in the trees and on the grounds throughout the Himmarshee area and river's edge. The event begins with a cocktail reception at the River Basin Plaza where guests make floating lanterns. Each person adds a special wish inside their lantern and then floats it out into the river. At the edge of the River Basin Plaza are planters with white paper star lanterns at the end of decorated dowls. Each guest takes a star lantern and processions along the path towards the Himmarshee area where they will plant the stars along the river's edge. Taiko drummers play as the guests make their way to the dinner area. Along the path are stilt walkers dressed in colorful oversized lantern costumes.

The guests enter the dinner area they are greeted by large lantern characters in the forms of sea and river life such as a Manatee, Dolphin, Star Fish, or other marine life. These lantern characters are placed throughout the space. There is a performance stage with live



Lantern Dinner Party



Chinese Lantern Festival

music and traditional Asian performances that will perform throughout the night. At the end of the dinner, along with dessert, Mooncakes are served with a message of goodwill in each one.

This event may also become the opening night gala to the Asian Moon Festival that we are proposing for the entire Riverwalk.

Elements

- Colorful lanterns hanging from the trees and placed on the ground
- Long picnic style tables for seating dressed in multiple colors with colorful lanterns on each table.
- Performance stage dressing in soft paper designs

- Catering service

Activities

- Lantern Making
- Stilt Walkers
- Taiko Drummers
- Procession
- Dancing

HIMMARSHEE PARK | Other Events

RESTAURANT

As the Riverwalk becomes more active, reopening the Riverhouse as a new restaurant will add an important destination to Himmarshee Park and the Riverwalk as a whole. Successful restaurants in parks throughout the country contribute substantially to the cost of maintaining and programming the park.



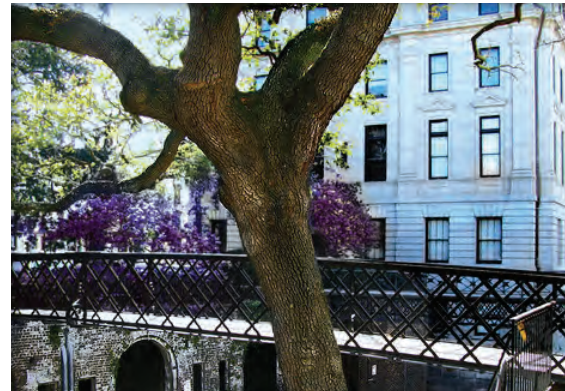
Bryant Park Grill



New Leaf Restaurant

WALKING TOURS

The existing walking tours are publicized as part of the overall promotion of the Riverwalk. Information about Himmarshee's history is included in the proposed "Riverstory" installation.



Savannah Historic District



San Antonio Historic Boat
Tour

ESPLANADE PARK: THE CULTURAL PARK

Located close to both the Broward Center for the Performing Arts and the Museum of Discovery and Science, Esplanade Park is in the perfect position to host a rich program of offerings relating to the cultural content of both organizations and other City cultural groups. Amenities for visitors to the Broward Center and the Museum of Science such as restaurants, rest rooms, and accessible transportation are a crucial aspect of re-envisioning the Esplanade Park and making it a destination.



ESPLANADE PARK | Cultural Performance Stage



ESPLANADE PARK

Cultural Performances

THE PERFORMANCE STAGE

Type of Event: Cultural performances

Hours: Varies depending on the type of performance.
Could be 8:00 PM evening shows or 3 PM matinees or post theater 10 PM events.

Concept

Esplanade Park becomes known as the hub of the City's cultural life. Musicians, dancers, theater performers and artists of the spoken word from the region identify Esplanade Park as a place they will find a receptive audience.

Dramatic views of the River provide a compelling backdrop for both daytime and evening performances. Infrastructure that allows for staging to be configured in various ways depending on the size and type of performance makes it a flexible performance space attractive to professional producers. The Performance Stage is creatively programmed and shows there are technically expert, so that it becomes known for high quality, artistic, and imaginative productions.

Elements

- Modern Dance
- Opera
- Classical Music
- Contemporary Music



Millennium Park



MetroTech, Brooklyn



Central Park



Avenue of the Arts, Philadelphia

- Theater
- Comedy
- Spoken Word
- Performance Art
- Musical Comedy

ESPLANADE PARK

Children's Festivals

CHILDREN'S FESTIVALS

Esplanade Park is used by the thousands of children that visit the Museum of Discovery and Science on a regular basis, so it would be a natural place for events of all sorts that give kids the opportunity to learn about the arts and sciences by participating in them.



Wild Weekend, Bronx Zoo



Wings, Bronx Zoo



Hudson River Pageant



Costume Workshop, Hudson River Pageant

RIVER BASIN PLAZA | Riverwalk's Grand Arena



RIVER BASIN PLAZA: RIVERWALK'S GRAND ARENA

The Plaza overlooking the River Basin is an excellent location for viewing regattas, and performances in the expansive circle of open water. Looking up from the River Basin to the terraces of the Broward Center for the Performing Arts, the viewing area expands into a grand arena with the water itself as the river's main stage.



RIVER BASIN PLAZA

Water Circus



Water Performance



Fireworks

RIVERWALK WATER CIRCUS

Type of Event: Spectacle

Hours: 7 PM – 9 PM annually

Concept

The River Basin becomes the watery stage for a show of “circus” acts that are orchestrated into an exciting production. The spectacle is visible from both sides of the river, from the River Basin Plaza and from the terraces of the Broward Center.

Elements

- Giant kites pulled by motorboats.
- Aerialists on construction boom cranes
- Acrobatics on floating rafts
- Floating pyrotechnics
- Music on moving boats
- A jet ski ballet
- Aerial fireworks pulled by speed boats
- Costumed kayaks



Aerial Fireworks



Outdoor Trapeze



Hudson River Pageant

RIVER BASIN PLAZA | Other Events

PERFORMANCES ON THE RIVER

Artists who have created performance events for other bodies of water are invited to adapt their work for the Riverwalk or design original pieces. These artists include Swoon, whose work is currently in the Museum of Art. She has taken a fleet of decorated boats along the waterways of New York state & Venice, Italy. Alice Farley's costumed theatrical work takes place along the water's edge and also in decorated kayaks. Felicia Young has designed participatory costumed pageants along the Hudson River.



Alice Farley



Alice Farley



Swoon



Alice Farley

RIVERWALK ECOLOGY TOURS

The Museum of Discovery and Science creates and leads tours for children and adults that begin at the River Basin Plaza, where participants can actually touch the water, and continue along the Riverwalk. The tours explore the ecology of the New River's water, plants, fish, and animals.



Kids in Nature



Ecology Class

RIVER BASIN PLAZA | Other Events

FISHING CLASSES

Rods, reels and bait is provided for people who would like to learn about fishing while enjoying the Riverwalk's breezes and boats going by.



Hudson River Park



Battery Park

KAYAKING ON THE RIVER

Classes and supervised events.



Hudson River Park



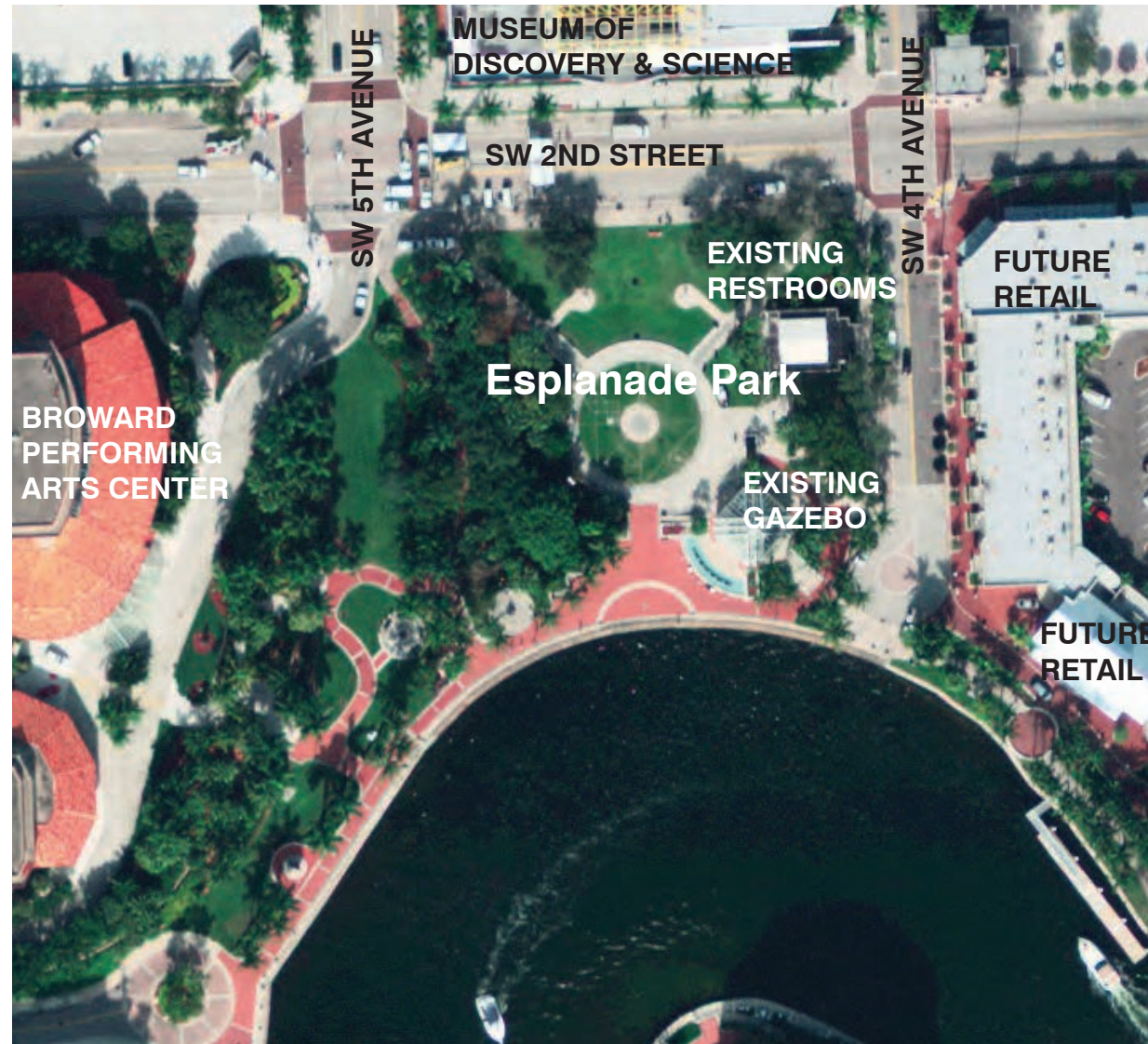
Boat Day, Westchester, New York

PHYSICAL IMPROVEMENT | Esplanade Park

COORDINATION WITH BCPA

As part of its planned enhancements, the Broward Center for the Performing Arts is contemplating the activation of the hillside area to the east of the Center as a way of not only to enhance its mission, but also to better connect the Center and the Esplanade Park area. Plans include the development of an Event Pavilion to the south of the main staircase ascending from the Riverwalk up to the Center. This space would be a two-story venue with support and concession areas on the lower level topped by an upper level with glass walls and terraces on three sides providing an extraordinary space for arts workshops, receptions, social events, and other gatherings.

To the north of the Pavilion, the plan contemplates the development of stepped terraces with casual café-type seating at multiple levels. These spaces would be serviced from the Pavilion concession space, and would provide prime viewing areas for events which could be presented in Esplanade Park and on the Riverwalk, or a performance barge moored along the New River. This space, coupled with the connection to a newly redesigned Esplanade Park, would create one of the most beautiful arts performance spaces in South Florida.



EXISTING

CHALLENGES & OPPORTUNITIES

- Esplanade Park does not take full advantage of its close proximity to major institutions.
- The overall park design blocks views from SW 2nd Street to the water through dense landscaped areas and eye-level plantings, as well as structures (restrooms and gazebo).
- The overall park design creates a sense of isolation for those within the park, blocking sightlines to adjacent live-work lofts to the east, and blocking views of BCPA to the west with a densely landscaped hillside. Real and perceived safety issues have been the result in recent years.
- Given its proximity to a renowned performing arts institution, the park design does not easily accommodate a range of performance configurations; opportunities exist for greater flexibility and integration of flexible stage types (including the possibility of a floating stage).



PHYSICAL IMPROVEMENT | Esplanade Park - Short Term



PROPOSED: SHORT TERM

ESPLANADE PARK - SHORT TERM IMPROVEMENTS

1. Existing Restrooms Building. Shade trees to remain, add outdoor seating.
2. Existing Sundial remains as hardscape. Visual obstructions removed.
3. Gazebo removed to open views. Shade trees remain.
4. Simple continuous paving at Riverwalk Basin to host performances.
5. Reconfigured Tree Hammock with dispersed midrange vegetation to open views and increase public safety.
6. Terraced Lawn
7. Public Seating
8. Day Docks (already approved)
9. Flowering Trees as a Riverwalk Landscape Design element.





PROPOSED: LONG TERM

ESPLANADE PARK - LONG TERM IMPROVEMENTS

1. Separate Restroom Building Removed to open views to the park. New restrooms incorporated in BCPA expansion (see #7). Perimeter shade trees to remain, movable seating.
2. Sundial removal to open park area
3. Expanded Performance Stage in form of movable floating stage
4. Existing shade trees enhanced by water feature to encourage pedestrian connection between Esplanade and the Museum of Discovery and Science
5. Grand stair to access Broward Center for the Performing Arts and new Terrace Level
6. Broward Center for the Performing Arts Expansion and upper level Terrace. Green roof and outdoor seating.
7. Broward Center for the Performing Arts new main entrance and drop off area with frontage on the park and separate area for public restrooms



RIVER PLAZA | BEFORE



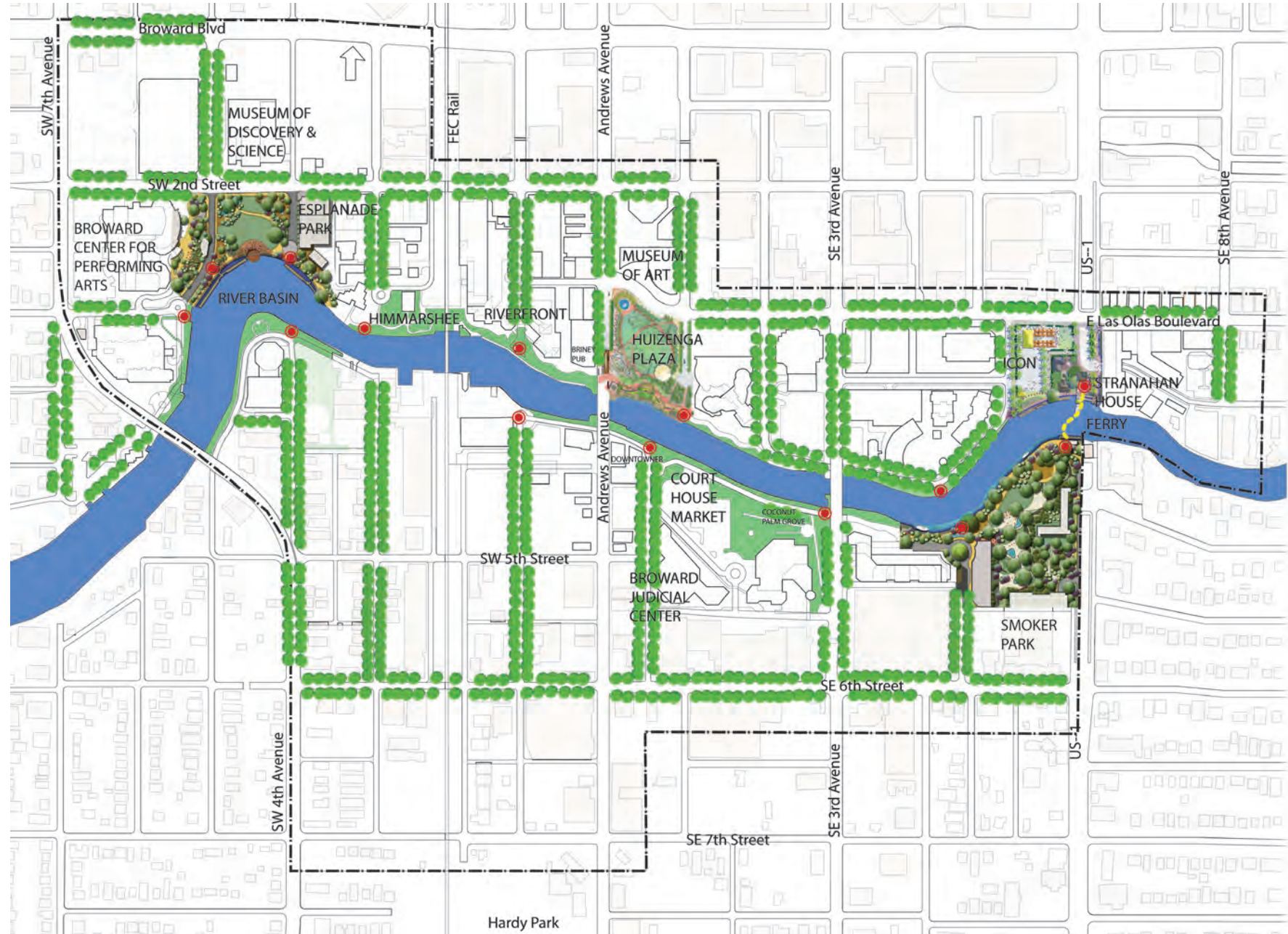
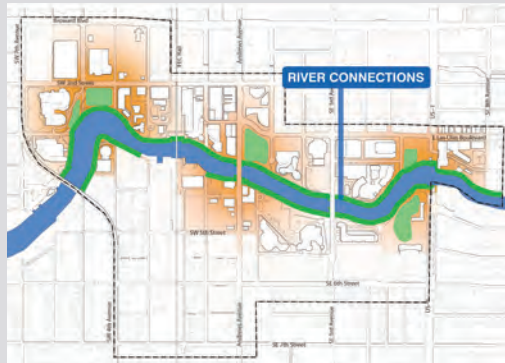
RIVER PLAZA | AFTER



RIVER CONNECTIONS | RIVERWALK'S 'MAIN STREET'

ACTIVATION CENTER INTENT

The fourth "Activation Center", is less a traditional center of activity than a linear element serving as the "string" that ties together the different "beads" that constitute the Riverwalk District's open spaces. In any vision for the Riverwalk District, the primacy of the river must not be forgotten, since the magnetic pull of people to water underlies all of our efforts. Water-based events, along with reminders of the New River's ecology and the importance of maritime industry to Fort Lauderdale, can all contribute to a heightened awareness of the river and offer unique ways to experience Downtown from the water.



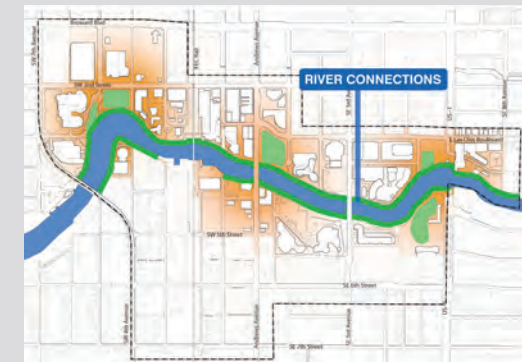
PROPOSED

THE NEW RIVER | RIVERWALK'S 'MAIN STREET'



THE NEW RIVER: RIVERWALK'S MAIN STREET

The New River itself connects the rich variety of destinations along it. Unlike some of the other waterways in Fort Lauderdale, the New River belongs to the public sphere and should be seen as such. It will be seen increasingly as the Riverwalk's Main Street when it becomes more accessible to the general public through opportunities for river crossing, recreational boating, and special events.



THE NEW RIVER | Barge Bands

BARGE BANDS

Type of Event: Music

Hours: Sunday: 11:00 – 4:00 PM

Concept

Three band barges start at Laura Ward Plaza or Smoker Park and finish at River Basin Plaza. The bands barges then turn and make their way back on the other side of the river. The first band plays for 40 minutes and then moves onto the next stop. Then the next band begins and follows up the river stopping at the same location as the previous band. Viewers may move along with their favorite band or sit in one place and wait for the next band to come by. Boat owners of smaller boats are encouraged to participate by anchoring or docking near the barges to listen.

The music concept is inspired by one culture or region but the styles of each barge should be different.

Theme

Some ideas are: Southern Rock; Parrothead's Day (Buffett); Latino; New Orleans; Cuban; Reggae; Caribbean; R&B; Pop; Bluegrass.

New Orleans Music: Blues; Zydeco; Jazz



Copenhagen Floating Stage



River Stage

Elements

- Three barges with staging and sound floating along the river. Barges are a simple design with emphasis on the quality of sound system.
- Local restaurants and cafés provide special menu items reflective of the New Orleans culture.
- Additional food and beverage vendors are added to the areas of the Riverwalk without restaurant or café seating.
- Colorful banners with artwork representing the New Orleans culture are placed at the docking locations along the Riverwalk.



Victoria Symphony Splash

Activities

- Dancing at the docking points on temporary dance floors.

RIVERWALK FESTIVAL OF MANY CULTURES

Type of Event: Multi-stage festival
Hours: 12 noon to 10 PM annually

Concept

Fort Lauderdale is home to people from Asia, the Caribbean, Europe, the Middle East, and other parts of the world. The Festival of Many Cultures turns all of Riverwalk into an international cultural feast highlighting the wonderful diversity of Fort Lauderdale's population.

The festival's grand finale celebrates the tradition of lantern making, practiced in Asia, South America, Europe, and North America, with a spectacle of floating lanterns.

Elements

- Traditional and Popular Music and Drumming.
- Traditional and Contemporary Dance.
- Typical Foods for Sale
- Demonstrations of Native Crafts
- National Arts
- Traditional Games

Activities

- Cooking Lessons
- Craft Workshops
- Lantern Making Workshops
- Lantern Parade
- Floating Lanterns



Korean Dancers



Avenue of the Arts



Avenue of the Arts



Bangkok Lantern Festival

THE NEW RIVER | Other Events

MILK CARTON DERBY

Participants compete in navigating handcrafted boats that float on milk cartons. This event is sponsored by a milk company.



Seattle Seafair

PADDLE BOATS

Paddleboats are available for rental at the two river crossings.



Echo Park, Los Angeles

PLEASURE BOAT MUSEUM

People pay to visit contemporary and vintage yachts and motorboats to directly experience the lifestyles they represent.



Yacht



Seattle Seafair



Echo Park, Los Angeles



Vintage Motorboat

THE NEW RIVER | Other Events

DRAGON BOAT RACE

An organized international sport that promotes teamwork and strategy with no prior experience required. Forty-foot long boats compete on the river with a race course that can be as short as 250m or as long as 1000m. Teams made of corporations, local organizations and youth groups with the proceeds going to the Riverwalk and its associated organizations.



Cambridge, MA



Peterborough, UK

RIVER SCIENCE BARGE

Floating museum about the ecology, plant and animal life of the river, coordinated with the Museum of Discovery and Science.



NYC Science Barge



NYC Science Barge

THE NEW RIVER | Other Events

JAZZ BRUNCH

Jazz Brunch held every first Sunday of the month with stages in Esplanade Park, Peck Courtyard at the Broward Center for the Performing Arts, Las Olas Riverfront stage, & Himmarshee, is a successful example of an event that is practically river-wide and could be expanded once accessible river crossings are achieved.



Jazz Brunch



Jazz Brunch

LIGHT UP LAUDERDALE

Downtown and the Riverwalk District is decorated for this holiday celebration that begins the end of November and extends into the first week of January. The highlight of the celebration is the lighted boat parade that begins beyond the Riverwalk, but assembles along it.



Punta Gorda, FL



Savannah, GA



San Antonio Riverwalk



San Antonio Riverwalk

THE NEW RIVER | Other Events

RIVERSTORY

Riverwalk visitors journey back in time visually and sonically to experience Riverwalk's rich and varied history. Visual and sound artists interpret historical Fort Lauderdale photos, newspaper articles and residents' stories. These 'narratives' are the content for 'telescopes' that line the river, permitting a look into Fort Lauderdale's past. Accompanying the telescopes are downloadable audio pieces. This audio walk is a collection of voices of locals from the past and present telling their stories about the Riverwalk as well as commissioned writers reading fictional stories about the area. Through listening devices strategically placed along the Riverwalk, visitors enter into and become active participants of the Riverstory.

The 'telescopes' are designed by artists in a classic nautical motif or as a sculptural interpretation. Content changes on a regular basis so as to maintain interest.

Stories about the river's ecology educate and entertain. They connect visitors to the abundant local flora and fauna that live in and around the river: the manatee, the iguanas, and the abundant palm varieties.

A simple system of sensors underwater is employed to make the invisible, visible.



Audio Walk

When a school of fish swims by or when the tides rise and fall a visual or auditory response indicates these events to visitors. There is an endless possibility of artists' interpretations in light and sounds that can enable us to connect with the unseen life around us.



Manatees



Early Ecology



Bathing Beauties

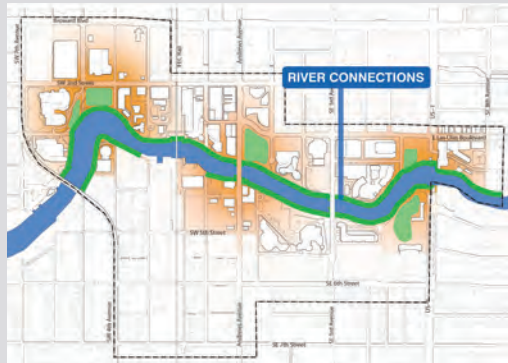
PHYSICAL IMPROVEMENT | Edit Clutter



Before



After



EDIT CLUTTER

While “improvements” in the public realm or often synonymous with new banners, benches, pavers and other accessories, the Riverwalk in its current condition could benefit from an editing, or removal, process. Visual clutter along the Riverwalk has grown over the years, layering effort upon past effort of well-intentioned, but often uncoordinated, upgrades and improvements. Some have been successful; others are unattractive. The end result appears unplanned in some cases, and can be visually distracting from the ‘main event’, which is the natural beauty of the river as it meanders through Downtown.

Editing needs to occur in two distinct areas: physical site furnishings and structures (such as bollards, benches, trash receptacles, signage, low walls, miscellaneous decoration, etc.); and plant materials (such as trees, shrubbery, ground cover, etc.). The grid of images shows just a small number of the variety of elements currently cluttering the open space. A comprehensive documentation of these elements is contained in a supplementary Appendix (under separate cover). The before and after renderings illustrate a strategy of replacing portions of the cluttered ground plane with a relatively simple palette of low grasses and ground cover that can create a more subdued background unity along the length of the Riverwalk.

RIVER FURNISHINGS

Editing visual clutter would be an effective, inexpensive short-term action, but it is not enough. Eventually the City must work with talented landscape architects to develop a specific approach and palette of materials appropriate to Fort Lauderdale's Riverwalk that sets a new standard of excellence in design and quality. Examples that strike a balance between utilitarian comfort and contemporary design, with a relationship to the natural materials of their contexts, are shown at left.

As a short-term action, in addition to removing unnecessary extraneous objects, this plan proposes the placement of dozens, or potentially hundreds, of colorful, moveable chairs along the length of the Riverwalk. These chairs would be an inexpensive way to provide a unifying element that is both functional, encouraging people to use the public spaces, and iconic, punctuating the length of the Riverwalk with bursts of color. The historic photo shows Adirondack chairs lining the New River in "old" Fort Lauderdale.



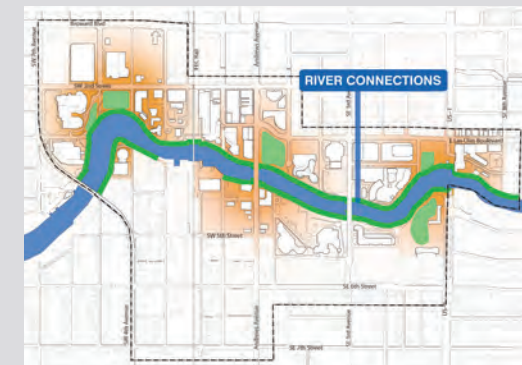
Tecnoparque, Azcapotzalco, Mexico City



Chapultepec Park, Mexico City



Linear concrete bench



PHYSICAL IMPROVEMENT | View Corridors and Wayfinding

PUBLIC ART

Pieces marking the view corridors by internationally known artists would be an attraction in themselves, as has been shown by art parks all over the country. Excellent public art would lend quality, richness, and texture as well as draw people down to the river to enhance the total experience of the Riverwalk.

BANNERS

Bright banners fluttering in the wind are an inexpensive immediate solution to marking Riverwalk's view corridors.



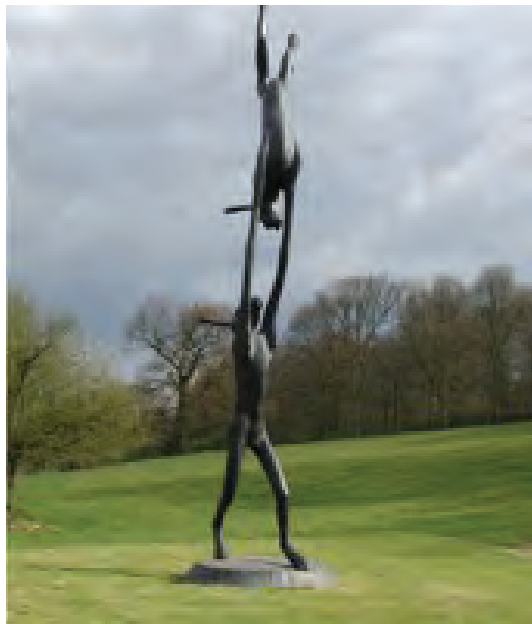
Dublin Docklands



Philadelphia



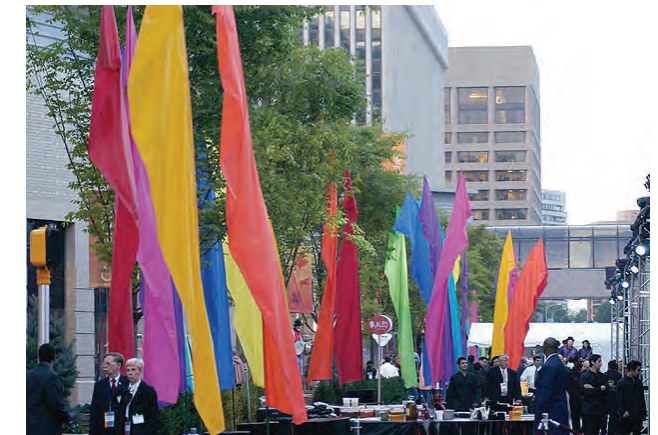
Crystal City



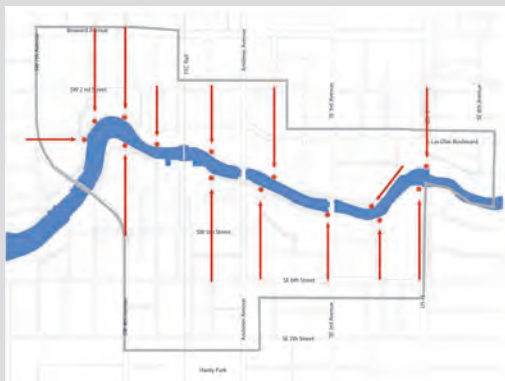
Barry Flanagan



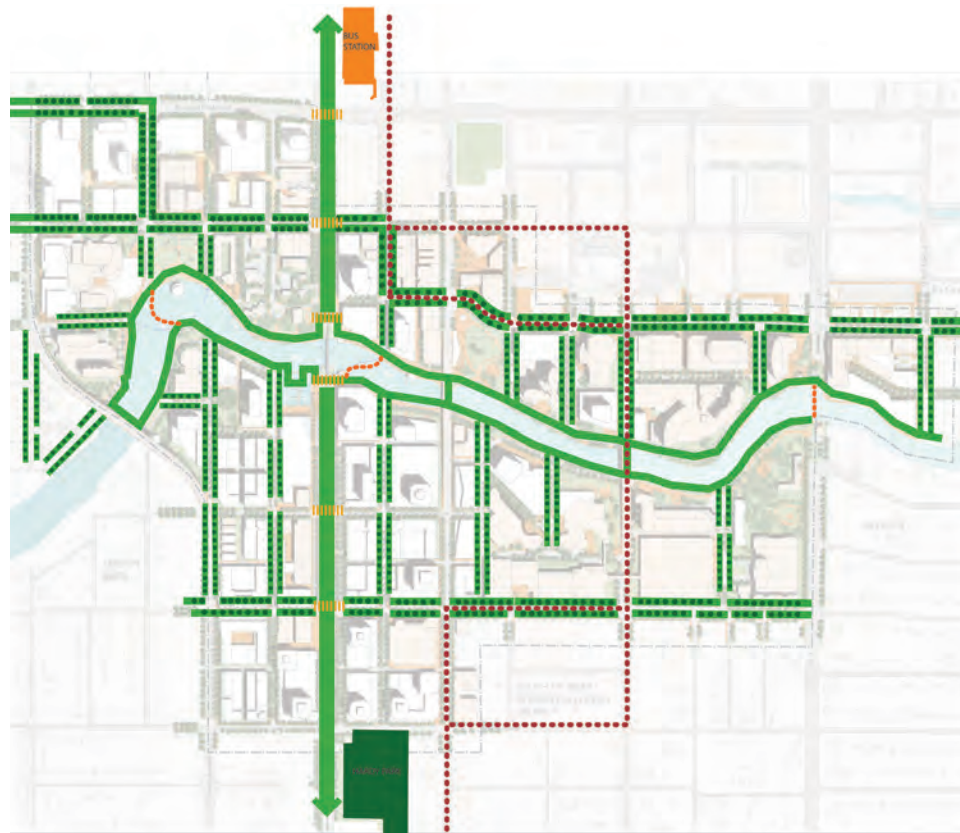
New York



Crystal City



View Corridors



PROPOSED

-  Special Landscape Treatment
-  Riverwalk
-  FEC Green Way
-  The Wave's route
-  Potential River Crossing / Water Taxi
-  Railway Crossing

CONNECTING DESTINATIONS

Improved streets and pedestrian connections can incorporate the Riverwalk District into the larger fabric of Downtown Fort Lauderdale, creating a synergy and awareness between institutions and destinations in and around the New River. Visibility and accessibility of the New River and the Riverwalk should be expanded to nearby street intersections with special landscape and streetscape designs that maintain open vistas and view corridors and provide coordinated wayfinding signage.

In order to create the interconnected network of “green streets” shown at left, streetscape designs specific to each street within the District should be developed. Given the varying nature of rights-of-way, property ownership, and City-County jurisdiction there is not a one-size-fits-all approach to the special Riverwalk District streetscape designs. However, they should attempt to achieve the following goals:

- Reduce lane widths and maximize sidewalk dimensions on streets leading to the river (see illustration, bottom right); sidewalks should accommodate a consistent, unique street-tree and landscape concept on these streets.
- In addition to improvements on streets leading to the river, develop specific streetscape designs for Las Olas Blvd. / 2nd Street responding to character and presence of nearby institutions/ destinations. Develop unique streetscape design for SE/SW 6th Street that emphasizes retail ‘main street’ function for Tarpon River neighborhood
- Utilize special landscape features different from other Downtown streets
- Develop a design theme(s)/ material palette(s) that create a strong identity for the entire Riverwalk District



Pavement does not need to be this wide.



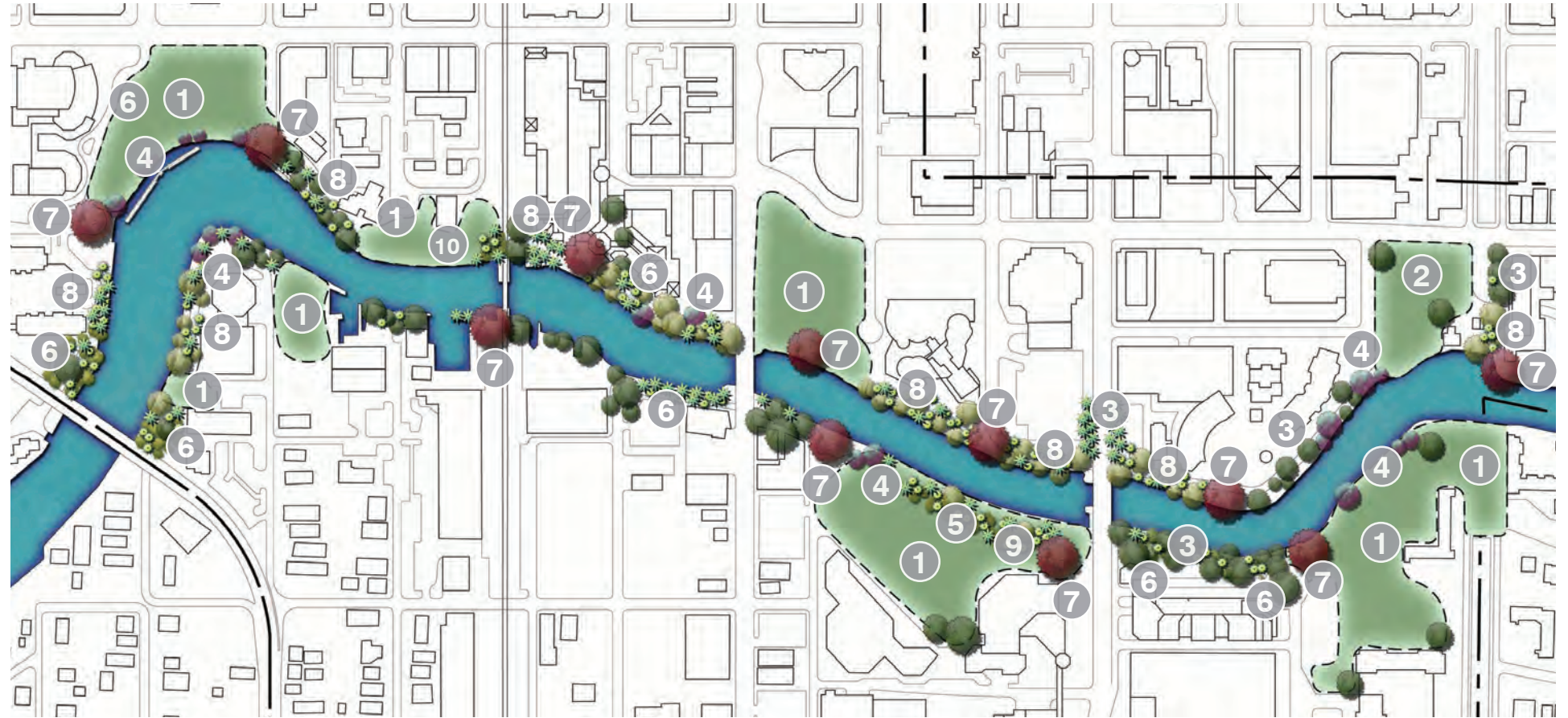
An example of streetscape improvements.



PHYSICAL IMPROVEMENT | Riverwalk Plantings

RIVERWALK PLANTINGS IMPROVEMENTS

1. Park Opportunities
2. Future 'Icon Development' Site
3. Shade Trees
4. Flowering Trees
5. Coco Palm Area - A Tree Harmony Program Early Success!
6. Native Plantings
7. Legacy Tree Placements
8. Oak Trees with CoCo Palm highlights
9. Bamboo replaced by native planting buffer
10. Historic Park as "Botanic Garden" with boulders for public seating



PROPOSED

* See Appendix for Raymond Jungles Riverwalk Field Notes

DESIGN LANGUAGE

Continuity is critical. The user experience should be consistent and seamless. Just as any great world class avenue has shady, activated, pedestrian circulation and public space opportunities on both sides, in a balanced manner, so should the New River Corridor, Riverwalk.

The Riverwalk should be "of the place," a regional solution. Our often unpleasantly hot, periodically, with frequency, deluged climate cries for SHADE, SHADE, SHADE, and refuge from sudden cloud

bursts.

Our climate's sub-tropical nature means that there will be 6 months of precipitation, and 6 months of dryer weather, often with little or no rain. With the idea of sustainability, and eliminating unnecessary costs, emphasis should be on indigenous, tried and true plant species from South Florida, or other naturalized, noninvasive, and sympathetic plants from other sub-tropical regions.

The landscape should be relaxed, informal, with great care to avoid

visual impediments where one cannot clearly see one's surroundings. User friendly.

There should be a calm sense of timelessness, simplicity, and escape from the perils of the city. Care should be taken to edit all existing elements that are unnecessary or visual detractors. Care should be taken to avoid the addition of new elements that do not provide critical functions, and complicate the visual harmony.

Furnishings should be consistent, have visual strength and perseverance. No trends here. Pavement should be minimal, but sufficient to accommodate all programmed and spontaneous public activities.

SUSTAINABILITY

The Riverwalk has set goals to be a sustainable entity within 10 years time. The use of indigenous plants will diminish the necessity of constant irrigation, fertilization, and pruning.

A simple palette of drought resistant low ground covers and pro-cumbent shrubs, will replace lawn in any area where it does not perform a specific function. Habitat for the local fauna will be established and augmented through the introduction of indigenous planting throughout the garden. This will have the added benefit of increasing the public's interaction with the fragrances, sights, and sounds of nature.

Areas where lawn remains will be irrigated separately, using the principles of weaning the lawn from excessive irrigation. Automatic sensors will override the irrigation system when rainfall is plentiful. Storm water will be diverted to shallow retention areas where plants with lighter water regiments can thrive.

FOCUSED PRECEDENTS

There are few examples of the extensive use of native plants on the civic scale. Some local areas that come to mind are:

- Old Cutler Road in the vicinity of Matheson Hammock Park and Fairchild Tropical Garden.
- Brickell Avenue in the vicinity of the residential towers just north of the Rickenbacker Causeway.
- Bayshore Drive in Coconut Grove.
- Gatehouse Road in Ocean Reef Club, designed by RJJ, and implemented post Hurricane Andrew.
- South Point Park by Hargreaves, recently finished in Miami Beach adjacent to Government Cut.
- Lincoln Road Mall by RJJ and Herzog & de Meuron between Lennox Avenue and Alton Road.

PHYSICAL IMPROVEMENT | Riverwalk Plantings



**AN EARLY SUCCESS:
THE TREE HARMONY PROGRAM**

Tree Harmony is a community program of the Riverwalk Trust in partnership with the City of Fort Lauderdale, dedicated to finding new homes for existing trees. It is essentially a tree matchmaking service, lining up receptor sites for healthy, donated trees.

legacy trees



Adansonia digitata
Baobab Tree



Ceiba pentandra
Kapok Tree



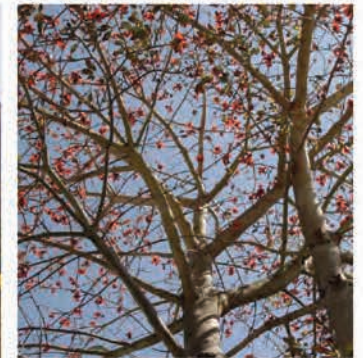
Albizia caribaea
Guanacaste Blanco



Chorisia speciosa
Floss Silk Tree



Tabebuia Argentea
Yellow Tabebuia



Bombax Ceiba
Cotton Tree

flowering trees

palm groves



Veitchia winii
Veitchia Palm



Phykosperma elegans
Salitaire Palm



Roystonea elata
Florida Royal Palm



Sabal Palmetto
Sabal Palm



Cocos nucifera
Coconut Palms



Copernicia baileyana
Bailey Palm



Sabal domingensis
Dominican Sabal Palm



Borassus aethiopicum
Borassus Palm



Corypha umbraculifera
Talipot Palm



Corypha umbraculifera
Talipot Palm

legacy palms

canopy trees



Bursera simaruba
Gumbo Limbo



Lysitoma latifolia
Wild Tamarind



Ficus aurea
Strangler Fig



Taxodium distichum
Bald Cypress



Quercus Virginiana
Live Oak



Chrysophyllum oliviforme
Satin Leaf



Bysonima lucida
Locust Berry



Guaiacum officinale
Lignum Vitae

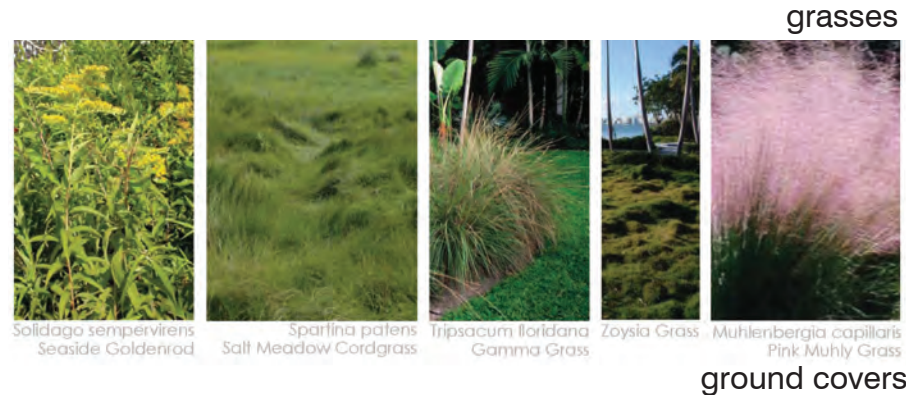


Coccoloba diversifolia
Pigeon Plum



Myrcianthes fragrans
Simpson's Stopper

understory trees & shrubs



grasses



ground covers

PLANT PALETTE

Public Gardens of a large scale offer unique opportunities to create Grand Scale impact. Roberto Burle Marx was a master in regards to this. Large scale “Legacy” trees can be introduced so that future generations can marvel at the thoughtfulness of our generation. Kapok trees, native to the Caribbean, South, and Central America are an example. Mature specimens in Key West and Coconut Grove are great examples. They are also very hurricane resistant.

Baobob Trees, such as the one on US1 south of the airport on the west side of the highway, the one at the Bass Museum of Art on Miami Beach and the Hollywood Circle, are another great species. Flowering trees are also a visual delight, and add emphasis to our subtle change of season.

Palm trees thrive and there are many that couldn’t grow anywhere else in the continental United States. “Legacy” palms such as the

Talipot, Palmyra, American Oil Palm, and Bailey Palms would be wonderful accents (one already exists). Coconut Palms, already in abundance, should be augmented to create shady, staggered height groves. Graceful Sabal Palms (our State Tree) with graceful curves, planted in a creative, naturally appealing manner add movement and a sense of having “always been there.”

The stately native Royal Palm, naturally found along rivers and wetlands, will repeat throughout the garden, accompanied by groupings of a variety of Feather Palms, thus protecting the public from the possibility of injury from heavy falling fronds.

Canopy Trees will be added at any possible location as shade is of the essence! Live Oak Trees will be predominant, along with other indigenous species, Mastic, Wild Tamarind, Gumbo Limbo, Paradise Tree, etc.

Understory Trees to create a second level, and provide habitat and interest will include lignum vitae, pigeon plum, black ironwood, satin leaf, Simpson stopper, red stopper, Locust berry, Jamaican Caper, cinnamon bark, and many others. Many of these trees have pleasant fragrances when they bloom. More dense planting of indigenous plants in a more naturalistic arrangement, some call a Hammock, will be utilized in areas where the screening of utilities, or unpleasant off site views occur.

The ground plane will consist of low level, low maintenance, drought resistant ground covers and shrubs that require little to no fertilization or pruning. They will be utilized in large swaths, dependent upon their cultural characteristics, e.g. love of sun, shade, wet, dry.

Hardy low Indigenous shrubs, e.g. horizontal cocoplum, golden creeper, and coontie will predominate. Low Indigenous grasses e.g. pink muhly grass, gamma grass, and cordgrass will be mixed with indigenous seasonal wild flowers to attract butterflies and enliven sunny glens. Zoysia grass and wild peanut grass will provide an alternative to traditional lawn.

ONGOING COORDINATION: THE TREE HARMONY PROGRAM

In September 2009, the Fort Lauderdale Yankee Clipper Hotel donated 14 large Coconut Palm trees to the Tree Harmony program. After coordinating with Raymond Jungles Inc. to determine the most suitable location for the trees, the palms were successfully transplanted to a site along the southern bank of the New River, providing much needed shade to an open stretch of the Riverwalk just north of the County Courthouse.

This notable success of the Tree Harmony program showcased not only the collaborative effort amongst the various partners, but helped realize many of the landscape principles identified in this planning effort:

- Nature in the City: The palms were planted in a natural “grove” setting, representing the natural landscape of the south Florida environment.
- Plant the seeds for a sustainable future: Coconut Palms, being native to the region, thrive in the South Florida climate and are a perfect match to the tropical feel of the Riverwalk.
- Pedestrian comfort is critical. By locating the palms in an area that previously lacked shade, the walk along the southern Riverwalk is now much more enjoyable.

In August 2010, the City identified a dozen or so large Royal Palm trees and three healthy Coconut Palms on a City owned property that was planned to be razed. Working once again in a collaborative effort, Raymond Jungles Inc. assessed the trees and proceeded to flag the proposed locations along the Riverwalk. The palms are proposed to be located along the entrance to the Performing Arts Center, and on the southern bank of the New River in front of the Esplanade Condominiums, helping to frame the south side of the Riverwalk.

RIVER CONNECTIONS | BEFORE



RIVER CONNECTIONS | AFTER



A DAY IN THE LIFE ON THE RIVERWALK: WEEKDAY

A DAY IN THE LIFE OF THE RIVERWALK

The illustrated calendars on the following three pages attempt to show the diversity of activities that could be available throughout the Riverwalk District on any given weekday, weekend day, or weekend festival day. They are not meant to prescribe the actual combination and location of events; rather, a sampling of current and proposed events have been laid out in a hypothetical arrangement to emphasize the importance of variety in programming, location, and time of day and week.

The ultimate goal is for the Riverwalk District to offer layers of activities and experiences dispersed throughout the area including: opportunities to enjoy everyday living; small-scale events; specialized, larger-scale, less frequent events; and signature events that may happen once or a few times a year.

It is clear that managing a weekly, monthly and yearly calendar in which the various events are coordinated and complementary is a highly complex undertaking. A management strategy is the critical link in bringing to life the recommendations of this plan, and is discussed in the next chapter.

FORT LAUDERDALE RIVERWALK DISTRICT: A DAY IN THE LIFE OF A TYPICAL WEEKDAY

WHERE/TIME	6-7 AM	8-9 AM	10-11 AM	12-1 PM	2-3 PM	4-5 PM	6-7 PM	8-9 PM	10-11 PM and on
ICON SITE & LAURA WARD PLAZA The Link to Las Olas		Sip coffee and read the paper at outdoor café seating		Lunch after shopping on Los Olas			Las Olas Shops fashion show and dinner	Dog walkers	
SMOKER PARK The Family Park	Joggers and dog walkers in park and along the path			Big picnic lunch for local workers		Kids play at the playground		Dog walkers	
COURT HOUSE The Market Square	Joggers and dog walkers in park and along the path			Shop at the green market					
ANDREWS BRIDGE RIVER CROSSING The Activity Destination		Joggers and dog walkers along path		Lunch at an outdoor cafe	Afternoon strollers and bikers		See a happy hour band at RW restaurant	Dinner in a restaurant	After-movie or after-dinner dessert in outdoor cafe
HUIZENGA PLAZA The Festival Park	Joggers and dog walkers in park and along the path	Joggers and dog walkers in park and along the path			Afternoon strollers and bikers	Kids play at playground		View movie at movie night in the park	
LAS OLAS RIVERFRONT The Arts & Entertainment Destination			Residents and tourist shop	Mom's lunch at Riverfront restaurants	Residents and tourist shop	Pre-Cruise reception for ship passengers	Evening art classes at Riverfront	See a movie at theater	Dancing in a club
HIMMARSHEE The Historic & Romantic Park	Joggers and dog walkers in park and along the path	Joggers and dog walkers walk along the path		Take a historic walking tour	Afternoon strollers and bikers		Residents enjoy lounging on Adirondack chairs		
ESPLANADE PARK The Cultural Stage	Joggers and dog walkers in park and along the path		Kids attend exhibit in museum	Kids lunch party after museum		Kids attend after school art program	Free yoga in the park		
RIVER BASIN PLAZA Riverwalk's Grand Arena		Morning fitness group meets			Afternoon strollers and bikers		Weekly outdoor cultural performance		
THE NEW RIVER Riverwalk's Main Street		Locals rent kayaks and paddle boats		Take the Water Taxi tour		Take a Riverboat Cruise			

A DAY IN THE LIFE ON THE RIVERWALK: WEEKEND

FORT LAUDERDALE RIVERWALK DISTRICT: A DAY IN THE LIFE OF A TYPICAL WEEKEND									
WHERE/TIME	6-7 AM	8-9 AM	10-11 AM	12-1 PM	2-3 PM	4-5 PM	6-7 PM	8-9 PM	10-11 PM and on
ICON SITE & LAURA WARD PLAZA The Link to Las Olas		Sip coffee and read the paper at outdoor café seating			Kids enjoy craft making workshop			Private dinner party	
SMOKER PARK The Family Park		Joggers and dog walkers in park and along the path		Explore the Art Park installations		Kids play at the playground		Dog Walkers	
COURT HOUSE The Market Square				Shop at the green market			Shop at the antique market		
ANDREWS BRIDGE RIVER CROSSING The Activity Destination		Joggers and dog walkers along path		Lunch at an outdoor cafe	Afternoon strollers and bikers		Have dinner and listen to a barge band play		Bars and restaurants are full
HUIZENGA PLAZA The Festival Park		Joggers and dog walkers in park and along the path	Free yoga in the park Sip coffee in the cafe		Afternoon strollers and bikers	Croquet tournament on lawn with oversized croquet set		Listen to reggae band play	
LAS OLAS RIVERFRONT The Arts & Entertainment Destination			Residents and tourist shop		Lunch at Riverfront restaurants	Wine tasting at local wine store		Dinner and dancing	Clubbing
HIMMARSHEE The Historic & Romantic Park		Joggers and dog walkers walk along the path		Brunch at the restaurant overlooking the river	Afternoon strollers and bikers		Evening wedding		
ESPLANADE PARK The Cultural Stage			Families attend a kids event	Lunch at Art Museum		Dance performance on the outdoor stage		Dessert at the Performing Arts Center restaurant	
RIVER BASIN PLAZA Riverwalk's Grand Arena		Coffee & pastry gathering as kayakers launch for the River excursion			Afternoon strollers and bikers		Pre-performance cocktail reception	See a show at Performing Arts Center	Dessert at Performing Arts Center restaurant
THE NEW RIVER Riverwalk's Main Street		Take the New River Kayak excursion		Take the Water Taxi tour			Barge Band docks at Andrews Bridge		

A DAY IN THE LIFE ON THE RIVERWALK: FESTIVAL WEEKEND

FORT LAUDERDALE RIVERWALK DISTRICT: A DAY IN THE LIFE OF A FESTIVAL WEEKEND									
WHERE/TIME	6-7 AM	8-9 AM	10-11 AM	12-1 PM	2-3 PM	4-5 PM	6-7 PM	8-9 PM	10-11 PM and on
ICON SITE & LAURA WARD PLAZA The Link to Las Olas		Sip coffee and read the paper at outdoor café seating		Festival vendor market opens	Lunch at restaurants and then shop festival vendor market	See show on Festival performance stage Festival procession		Festival performance stage continues	
SMOKER PARK The Family Park		Joggers and dog walkers along path			Kids festival activities and games	Kids play at the playground Festival procession begins here	Watch environmental festival performance		
COURT HOUSE The Market Square									
ANDREWS BRIDGE RIVER CROSSING The Activity Destination		Joggers and dog walkers along path		Lunch at an outdoor cafe	Afternoon strollers and bikers	Festival procession passes through	Have drinks and listen to festival activities from restaurants	Dinner in a restaurant	Listen to festival finale on the main stage from restaurants
HUIZENGA PLAZA The Festival Park		Joggers and Dog walkers in park and along the path		See opening festival main stage performance	Festival main stage programming continues all day	Festival procession passes through	Festival main attraction		See festival finale at main stage- Dance party for all
LAS OLAS RIVERFRONT The Arts & Entertainment Destination				Lunch at a Riverfront restaurant	Festival attendees shop	Festival procession passes through	Dinner in restaurants		Featured DJ's in clubs associated with festival theme
HIMMARSHEE The Historic & Romantic Park		Joggers and Dog walkers walk along the path				Festival procession down the Riverwalk	Festival attendees enjoy lounging on Adirondack chairs	Dinner in Himmarshee restaurant	
ESPLANADE PARK The Cultural Stage					Families attend festival performance	Festival procession terminates for finale performance	See festival performance		Festival finale on performance stage
RIVER BASIN PLAZA Riverwalk's Grand Arena					Kids water craft making workshop		Boats pull up to listen to festival performances		
THE NEW RIVER Riverwalk's Main Street		Locals rent kayaks and paddle boats		Take the Water Taxi tour		Take a Riverboat Cruise		Boats dock at Andrew's Bridge to participate in festival finale	